



COMMUNITY ENGAGEMENT

MASTER PLAN

MT ADELAIDE MT CLARENCE IRRERUP CORNDARUP

A PLAN TO CONSERVE + ENHANCE

HAVE YOUR SAY...

The City of Albany is inviting the community to have its say on the **Mt Clarence | Irrerup, Mt Adelaide | Corndarup Master Plan**.

It is intended the Master Plan will provide a comprehensive long-term vision for the Mounts, that respects and enhances its significant natural, cultural, social and recreational assets and its unique landscape setting.

The City of Albany values the community's thoughts and is seeking feedback on the project vision and the Master Plan's draft strategies, projects and initiatives.

To complete the online survey go to: www.surveymonkey.com/r/HC5X8XY

Hardcopies of the documents are available for viewing at the information sessions, at the City of Albany North Road reception and Albany Public Library.

Each completed survey will go into a draw for a \$100 voucher to a local business of your choice.

ALBANY
WESTERN AUSTRALIA

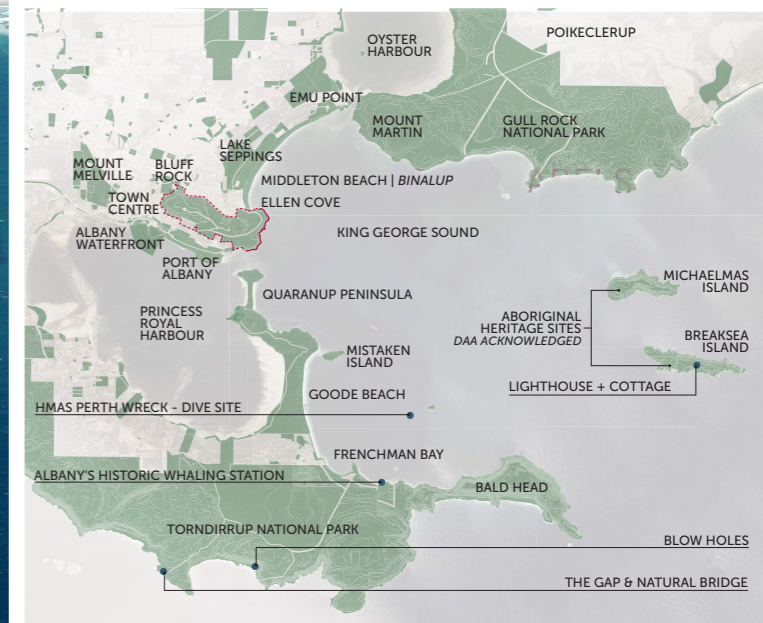
DRAFT SUMMARY

13.06.2019

BACKGROUND CONTEXT

PROJECT OVERVIEW

DRAFT



PROJECT OVERVIEW

MT ADELAIDE, MT CLARENCE AND SURROUNDING ENVIRONS IS A PLACE OF UNIQUE SOCIAL, CULTURAL AND NATURAL VALUE, CONTAINING ASSETS OF NATIONAL SIGNIFICANCE INCLUDING THE PRINCESS ROYAL FORTRESS, DESERT MOUNTED CORPS MEMORIAL AND NATIONAL ANZAC CENTRE.

The world-class natural environment of the Mounts is exceptional in many ways – in its ancient geology, sculptured granitic landforms with world-class views of the harbours and hinterland, and its abundant native vegetation rich in wildflowers and birdlife.

The site's Aboriginal cultural and natural values are considerable and should also be recognised in any future growth and development model.

Sought after increases in visitor attraction and experiences will require diversification, further investment and detailed planning. The potential economic, social and cultural benefits from ongoing and sustainable growth and development of the Mounts Precinct is well understood for Albany and the broader region.

PURPOSE OF THE MASTER PLAN

THE MOUNTS MASTER PLAN WILL PROVIDE A COMPREHENSIVE LONG TERM VISION FOR MT CLARENCE AND MT ADELAIDE WHICH RESPECTS AND ENHANCES ITS SIGNIFICANT NATURAL, CULTURAL, SOCIAL AND RECREATIONAL ASSETS AND ITS UNIQUE LANDSCAPE SETTING.

The master plan will establish a clear vision and refined set of guiding principles, which in turn drives an overarching but flexible framework and simple criteria to guide project outcomes, as well as identify strategies and inform decision-making to guide sustainable investment and management over time.

OBJECTIVES

THE MASTER PLAN ADDRESSES THE NEED TO ESTABLISH A STRATEGIC APPROACH TO ACHIEVE:

- a long term vision and strategic objectives for the site;
- an integrated master plan with long-term context;
- sustainable management and protection of significant natural and cultural assets;
- a strong market identity and brand;
- prioritised implementation;
- enhanced community ownership and place activation;
- increase visitation to tourism assets and commercial enterprises (such as National Anzac Centre);
- a strong governance framework;
- outcomes that will target a diverse range of user groups and generations.

PROJECT AREA + STRATEGIC CONTEXT

THE MASTER PLAN PROJECT AREA ENCOMPASSES APPROXIMATELY 242 HECTARES, BOUNDED BY THE CITY CENTRE, PRINCESS ROYAL HARBOUR AND MIDDLETON BEACH.

The project area is made up of a number of reserves on Crown land, with management responsibilities held primarily by City of Albany and a number of key stakeholders. Water storage, reticulation and power supply infrastructure and easements all occur within the reserves. A number of Aboriginal Heritage sites have been identified within the project area and are protected under the Aboriginal Heritage Act 1972.

TIMEFRAME

The master plan vision, objectives and action/implementation plans will be based on 25+ year timeframe:

- **Horizon 1 (short term): next 8 years (2026)**
- **Horizon 2 (medium term): next 16 years (2035)**
- **Horizon 3 (long term): 25+ years (2045)**

BIODIVERSITY SIGNIFICANCE

FLORA + FAUNA

GEOLOGY + TOPOGRAPHY

CLIMATE

Southwest Australia has emerged as one of the great areas in the temperate regions of the world. Half the species here are found nowhere else on earth and there's 8,000 species all up in the southwest floristic region, so it's incredibly rich.

This is the oldest of the old; the granite rocks that form the low hills around Albany are a quarter of the age of the Earth itself – more than a billion years old... the age of the landscape appears to be part of the story.

MARINE ECOLOGY

FRIENDLY FRONTIER

The interactions between the European explorers (later settlers) and the Menang people were well documented and generally positive. The Menang were understandably wary of these intruders, and they were initially confused with returning spirits of the dead. Noongar tradition held that the dead were white, so these white faces were intimidating at the outset.

The first Commandant, Major Edmund Lockyer, was keen to call the settlement Fredericktown, after Frederick Augustus, Duke of York and Albany, but this name never became official. Until 1831, it was known as King George (or George's) Sound, but Governor James Stirling changed it to Albany.

THE TOWN + SETTLEMENT

DEFENCE + WAR

WW1 ANZAC ALBANY

"The protection of the Sound and Princess Royal Harbour is of vital importance for the general security of the Australian colonies in time of war. If left undefended the Sound becomes the weak point in the Australian system of defence."
Col. Peter Scratchley, 1881

Eventually a great convoy was gathered comprising 38 troopships (Australian and New Zealand) and six warships (including the Japanese cruiser Ibuki). All but two gathered in King George Sound in late October 1914 to provision for the voyage across the Indian Ocean and on to Europe. On board were almost 30000 troops and 8000 horses from all parts of the country, except, ironically, Western Australia. Local troops trained at Blackboy Hill camp near Perth and were embarked on two ships - the Medic and Ascanius - that left from Fremantle.

MONUMENTS + MEMORIALS

PRINCESS ROYAL FORTRESS

"The cliffs around Albany were looming ahead looking very desolate in their misty grey mantle ... Looking through the glasses Albany appears to be a very pretty place ... As we passed down the Harbour the sun lit up the hills on either side and our last view of Australia was a very pleasing if sad one."
Pte. William Kirkland

NATIONAL ANZAC CENTRE

The first convoy, along with many other stories of the Great War, are commemorated in the National Anzac Centre on Mount Adelaide, which opened on the centenary of the convoy's departure in 2014.

the AMAZING SOUTH COAST

THE NATURAL ENVIRONMENT

NOONGAR CULTURAL HERITAGE

EUROPEAN SETTLEMENT

SITE THROUGH TIME

CREATION STORIES

CONNECTION TO THE MOUNTAINS

FIRE

MENANG PEOPLE

The Noongar name for Albany itself is Kinjarling, or place of rain. The Noongar people have inhabited the area for thousands of years. They are one of the oldest surviving cultures of the world whose spirituality rests on ancestral beliefs of creation.

THE DUTCH

THE FRENCH

THE BRITISH

CHARLES DARWIN

"King George's Sound had been chosen as the proper place in which to prepare ourselves for the examination of the south coast of terra Australis, and I sought to make the best use of the advantages it might furnish."
Commander Matthew Flinders R.N., 9 December 1801

"They possess her some advantages, the climate is pleasant, and more rain falls than in the Eastern colonies ... The second grand advantage is the good disposition of the aboriginal blacks."
Charles Darwin, March 1836

EUROPEAN EXPLORATION

ENCOUNTERS

P&O ERA

1908 THE GREAT WHITE FLEET

Once Albany became established as a major destination for shipping coming from both east and west, it became apparent that guidance, in the form of lighthouses, was needed. This was borne out by a series of shipwrecks on the dangerous south coast.

LIGHTHOUSES

Whaling was the first industry in Western Australia. The first recorded whaling ship to visit the area was the Elligood in 1800, twenty-six years before European settlement.

SHIPPING + MARITIME

WHALING INDUSTRY

Albany's moderate climate and unspoiled environment made picnicking a popular pastime in the 19th and early 20th centuries. Many locations lent themselves to outdoor meals and excursions and locals were quick to take advantage.

PARKS + PICNICS

MARINE DRIVE

"Circling Mount Clarence, and providing one route to Middleton Beach, is the Marine Drive, one of the finest scenic drives in Australia. Running along the hillside, high above the sea, the Drive permits views over the whole of the Sound and the inner Harbour. It leads on to Middleton Beach, with its sheltered cove at the West end and, farther round, excellent surf facilities where the rollers sweep in across the Sound."
Albany tourism promotion, 1933

TOURISM + RECREATION

EYRE PARK

MIDDLETON BEACH

Middleton Beach became an increasingly popular place to visit towards the end of the nineteenth century, especially for those arriving by rail from the eastern regions following the discovery of gold at Coolgardie.

Tourism increasingly became vital to Albany's progress, with the golf links and Marine Drive being constructed in order to attract visitors to Middleton Beach and the town generally.

Over the decades, families have enjoyed camping, surfing, and learning to swim at this beautiful beach.

KEY DRIVERS

EIGHT KEY DRIVERS HAVE BEEN IDENTIFIED WHICH DEFINE A DIVERSITY OF SUSTAINABLE ASSETS AND OPPORTUNITIES.

Each key driver is expected to impact different areas of social and economic development within the City of Albany and the wider South Coast region, with the primary intention to bolster Mt Adelaide and Mt Clarence's position as the center and focus of activity for other areas of influence.



SUSTAINABLE COMMUNITIES

Develop and promote activities and services focused on both visitors and locals that will nurture civic pride, strong partnerships, and growth of a collaborative network throughout the region, Perth and beyond.



RESEARCH, EDUCATION + COLLECTIONS

Engage the next generation and facilitate a better understanding of the site and the region through leading research and education programs. Increase the potential for discovery and interpretation of natural environment and rich layers of history through protecting and enhancing natural assets; facilities and built fabric; collections and displays; stories and memories.



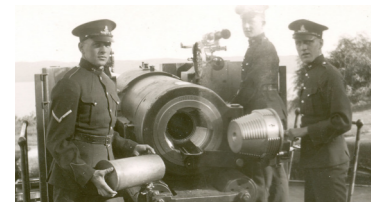
MENANG CULTURAL HERITAGE

Tell stories, interpret and share significant Aboriginal heritage of the landscape. Develop and grow enterprise development work and education programs that will acknowledge and celebrate the role of traditional owners, through legacy projects which engender respect and shared custodianship.



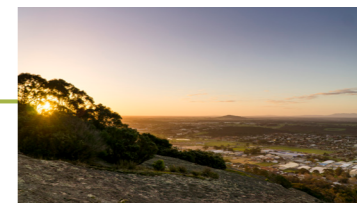
POST-COLONIAL HERITAGE

Enhance and interpret the significant post-colonial heritage of the site. Embrace the potential for discovery and interpretation of world recognised natural environment with rich layers of settlement, maritime and military history.



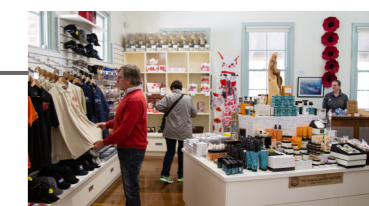
ANZAC LEGACY

Commemorate, interpret and share our unique connection to the Anzac story, providing a world-recognised cultural pilgrimage for Australians and visitors to remember those who served.



CARE + CONSERVE

Protect and promote the site's natural beauty and embrace the region's status as a world recognised biodiversity hotspot. Adopt sustainable and adaptive management practices that will implement appropriate uses and enhance significant natural environments and places.



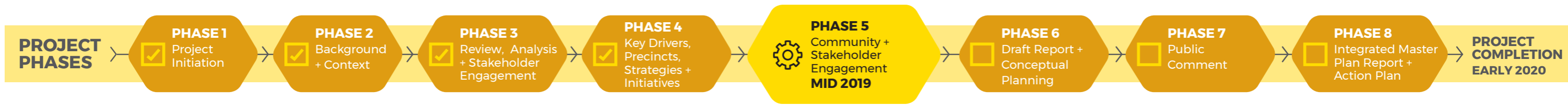
ENTERPRISE + ECONOMY

Develop and support enterprise that is financially sustainable and resilient to change, supports local business and creates jobs, and positions the park and the facilities within it as a world class visitor destination, ultimately extending visitor stays in Albany and contributing to growth in the region's economy.



DIVERSITY OF EXPERIENCE

Provide a diverse range of activities and experiences that will delight, educate, engage and sustain visitation. Create a vibrant and inclusive place that encourages passive and active recreation, art and creativity and engages people through authentic and memorable experiences.



BACKGROUND CONTEXT

CHARACTER PRECINCTS + NEIGHBOURHOODS

DRAFT



LEGEND

- P1 PRINCESS ROYAL FORTRESS
- P2 RIDGE
- P3 DESERT MOUNTED CORP
- P4 GRANITE OUTCROP
- P5 RANGE
- P6 COASTAL EDGE + MARINE DRIVE
- P7 PORT INTERFACE
- P8 URBAN EDGE
- P9 BUSHLAND
- P Parks
- G Gateway Neighbourhoods
- * Mount Summit
- Site Boundary

GATEWAY NEIGHBOURHOODS

For the purpose of analysing the economic and social importance of Mt Clarence and Mt Adelaide and the site's context as a central hub of activity within Albany, the surrounding areas have been dissected into a number of Gateway Neighbourhoods. Each contain various supporting assets, with their own distinct social, environmental and/or economic contributions.

CHARACTER PRECINCTS

NINE PRECINCTS HAVE BEEN IDENTIFIED, EACH WITH ITS CHARACTER, IDENTITY AND UNIQUE INTERFACE WITH THE SURROUNDING ENVIRONMENT AND NEIGHBOURHOODS.

PRINCESS ROYAL FORTRESS

Positioned atop Mt Adelaide | *Irrerup* the precinct looks south out past the islands through the entrance to King George Sound, and east across Oyster Harbour to the rural hinterland of Albany.

Est. 1893 as the first coastal defences for the colony and trade routes, the precinct is rich in military history. Today the site layers a wealth of historical, contemporary, cultural, commemorative and natural assets.

Surrounding granite outcrops are important Aboriginal ceremonial grounds, and the jarrah, marri and yate bushland hold significant aesthetic value. The precinct is the honeypot, the orientation, the microcosm of all that the Mounts offer to visitors and locals alike.

MT ADELAIDE | IRRERUP, MT CLARENCE | CORNDARUP MASTER PLAN

THE RIDGE

Entry to the Park is through this precinct and thus an important orientation point for visitors. Apex Drive with its Avenue of Honour Trees, links the two summits of Mt Clarence and Mt Adelaide. The Apex Drive Avenue honours those killed in the two World Wars and the Korean War. Bushland adjacent to Apex Drive, a Noongar Aboriginal burial site persists unnoticed save for the spectacular summer flowers of the *Moodjar* or Christmas trees that adorn the deep sand adjacent. The precinct is a reflective space for two cultures commemorating lost loved ones together.

DESERT MOUNTED CORPS

The Desert Mounted Corps Memorial and Padre White Lookout stands at the summit of Mt Clarence | *Corndarup*, from offers world-class views of the surrounding landscapes and a visual link across the Town Centre to Mt Melville | *Kardarup*. The precinct is the site of Albany's Anzac Day dawn service each year and provides infrastructure to host significant crowds and visitation.

COASTAL EDGE + MARINE DRIVE

A rich maritime history prevails, from traditional Aboriginal times, early explorers and a long standing shipping industry. The coastal boardwalk and trail is a sensory rich experience following the rugged granite coastal edge and undulating dunes, offering close encounters with native fauna and marine life. Marine Drive, hugging the slope of Mt Adelaide, is considered one of Australia's most spectacular short scenic routes. Multiple lookouts and vantage points provide views over the coast line, islands and working port infrastructure.

THE RANGE

The Range precinct provides a direct link between the upper and lower fortress and gun emplacements.

The south-east slope of Mt Adelaide proved suitable for troop's small-arms practice during war time, and the low coastal vegetation was cleared to enable this military use. Today the disturbed bushland is dotted with historical features, memories and untold stories.

PORT INTERFACE

Historically an industrial site, this cleared and now degraded landscape has potential to be formalised as the entry gateway for the Mounts.

Views over the working operations of the port highlight the inland rural economies that the Port of Albany serves.

URBAN EDGE

Interface with the sites surrounding neighbourhoods. The character of this precinct transitions from residential neighbourhoods to the urban character of the Town Centre and through to industrial port activities.

Mt Adelaide and Mt Clarence forms the backdrop for educational sites like Albany Senior High School and the recreational backyard for numerous residents. A number of formal and informal entry points punctuate the site bringing numerous environmental issues as well as a lack of orientation and wayfinding.

GRANITE OUTCROP

The granite outcrop vegetation is rich in rare micro-communities of plants. Sheet rock on seeps has a biofilm of dark cyanobacteria that is notoriously slippery when wet. Drier rock is usually covered with crustose lichens. Moss forms green and grey mats where the shallowest of soils can take hold. They are sensitive ecosystems, easily damaged and the home to vulnerable threatened plant species found on the Mounts.

BUSHLAND

Home to more native plants than Perth's Kings Park, the bushland is the largest precinct on the Mounts. There are distinctive and localized Albany coastal headland vegetation types on the Mounts, dominated by low woodlands, forest and thickets, and the diverse granite outcrop vegetation layers, all responding to differential soil depth and moisture.

HAVE YOUR SAY... PROJECT WORKING VISION

DRAFT

The City is seeking feedback on the project's working vision and would like to know what your vision is for Mt Adelaide, Mt Clarence. Refer to question 14 of the survey to provide your feedback.



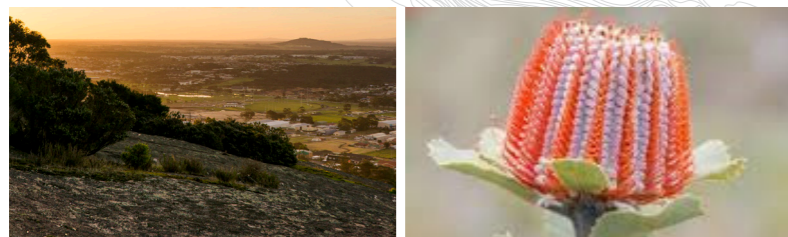
PRINCESS ROYAL FORTRESS



LOCAL COMMUNITY



NATIONAL ANZAC CENTRE



REGIONAL BOTANIC GARDENS



NATURE PLAY



CONNECTING PLACES + EXPERIENCES



IDENTITY + BRANDING



VISITOR FACILITIES + SITE-WIDE INFRASTRUCTURE



PUBLIC ART + CULTURE PROGRAMME



EDUCATION + INTERPRETATION

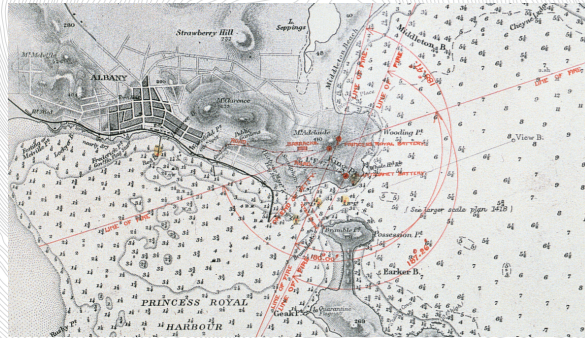
WORKING VISION
'Regional Australia's iconic coastal parkland and botanic gardens, showcasing world recognised and inspirational natural, cultural, heritage and recreational experiences and commemorating the Anzac legacy.'

HAVE YOUR SAY... MASTER PLAN STRATEGIES

DRAFT



Ten key Master Plan Strategies have been identified through the planning process. The City would like your feedback on these strategies and how you would like to see them prioritised. Refer to question 15 of the survey to provide your feedback.



PRINCESS ROYAL FORTRESS

The Princess Royal Fortress (opened in 1893) encompassing the Princess Royal Battery, Plantagenet Battery and surrounding landscape, is a valued local asset of national historical significance, with significant potential to expand and improve the experience of the National Anzac Centre and Mounts community precinct - by recognising the cultural and historical significance of the place, focusing on the continued discovery, interpretation and improved visibility of unique stories, people and places.

KEY PROJECTS + INITIATIVES

- Buildings and infrastructure adaptive reuse
- The guns of the fortress
- Connect the upper and lower forts



LOCAL COMMUNITY

Foster local ownership and pride and enhanced community participation - embedding programs, services and activity to enhance social cohesion, sustainability and prosperity, and promote intergenerational experiences - targeting everyone From family networks and kids, to seniors.

KEY PROJECTS + INITIATIVES

- 'Friends of the Mounts' group
- Volunteer guides programme
- Ongoing stakeholder and community engagement



REGIONAL BOTANIC GARDENS

The establishment of a world-recognised regional botanic garden network showcasing the regions unique landscape, biodiversity and natural environment - providing inspirational experiences to enhance life - and key to the adoption of sustainable and adaptive management practices that will implement appropriate uses and enhance significant natural environments and places.

KEY PROJECTS + INITIATIVES

- Display gardens and collections
- Botanic Gardens infrastructure
- Natural reserves and landscape management

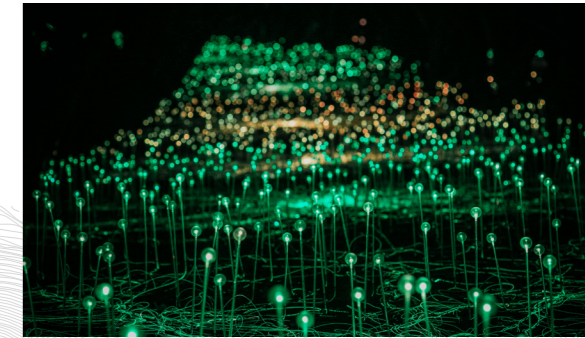


NATIONAL ANZAC CENTRE

Continue to provide and build an engaging visitor experience over the short, medium and long term, by taking a strategic and dynamic approach to museum collection and display material, in order to encourage repeat visitation and maintain contemporary relevance of the museum.

KEY PROJECTS + INITIATIVES

- Refresh projects, content and collections



PUBLIC ART + CULTURE PROGRAMME

Create new public art experiences and lasting cultural tourism products, assets and infrastructure to support engaging visitor experiences, deliver a significant cultural legacy, and help create a vibrant place for current and future generations - towards a new identity as the cultural capital of regional Western Australia.

KEY PROJECTS + INITIATIVES

- Place vitality and events programme
- Heritage and cultural significance plan
- Noongar Menang culture: about country-Boodja
- Dual naming



EDUCATION + INTERPRETATION

Engage the next generation and facilitate a better understanding of the site and region through leading research, education and interpretation - increasing the potential for the discovery and interpretation of natural environment and rich layers of history, through protecting and enhancing natural assets; facilities and built fabric; collections and displays; stories and memories.

KEY PROJECTS + INITIATIVES

- School education program
- Tertiary knowledge and innovation program
- Development of designated educational spaces
- Site-wide signage and interpretation strategy



IDENTITY + BRANDING

Development of a consistent, clear and legible brand and wayfinding system so that visitors are able to easily identify, navigate and interpret locations in a diverse network of activities and destinations.

KEY PROJECTS + INITIATIVES

- Redefine the brand
- Visitor orientation and wayfinding strategy
- Connecting destinations and attractions



NATURE PLAY

The Mounts can provide unique experiences for nature based play to enhance its community and visitor appeal - encouraging kids playing outdoors and in nature and to inspire positive environmental awareness, cognitive, emotional and physical development, through discovery learning and connection with nature.

KEY PROJECTS + INITIATIVES

- Nature playground at Princess Royal Fortress
- Nature-based activities and experiences
- Water linkage recreation opportunities



CONNECTING PLACES + EXPERIENCES

Development of a balanced, site responsive trail network system - linking major destinations, neighbourhoods and activity nodes within the city, and catering to a range of different trail users, styles, levels of difficulty and experience (active, passive, heritage, nature) - whilst ensuring the protection of the sites' environmental, cultural and heritage values.

KEY PROJECTS + INITIATIVES

- Driving and public transport experience
- Walking trail network
- Mountain bike trail network
- Iconic Mt Adelaide | Irrerup trail
- Iconic coastal trail
- Connecting to adjacent neighbourhoods



VISITOR FACILITIES + SITE-WIDE INFRASTRUCTURE

Identify, refurbish and enhance key infrastructure and public realm assets to ensure the continued successful operation and continually improving visitor experience within the broader Mounts precinct (Mt Adelaide, Mt Clarence and environs), and revitalised Princess Royal Fortress (PRF) and National Anzac Centre precinct.

KEY PROJECTS + INITIATIVES

- Visitor and tourism services hub
- Vehicle access and parking strategy
- Infrastructure upgrades and essential services

APPENDIX 1 : MASTER PLAN - DRAFT KEY PROJECTS + INITIATIVES

APPENDIX 2 : DRAFT KEY PROJECTS + INITIATIVES - SITE PLAN

APPENDIX 3 : DRAFT KEY PROJECTS + INITIATIVES - DETAIL PLAN

APPENDIX 4 : TRAIL NETWORK CONCEPT PLAN

PRINCESS ROYAL FORTRESS

BUILDINGS + INFRASTRUCTURE ADAPTIVE REUSE

- strategically plan for the future expansion of improved visitor amenities, and removal of non-significant buildings
- maximise the impact of heritage building assets (such as Barracks Gallery) to optimise visitor and community use
- audit and refine current collections and exhibition to stories of local provenance only

THE GUNS OF THE FORTRESS

- restore and interpret original batteries and landscape settings (including gun emplacements with guns, magazines, shell stores, bunkers)

CONNECT THE UPPER AND LOWER FORTS

- physically re-connect upper Princess Royal Fortress and lower Plantagenet Battery sites through trails and interpretive reveals of hidden sites and history

EDUCATION + INTERPRETATION

SCHOOL EDUCATION PROGRAM

- promote development of school-based education and excursion programs linked to existing curricula and national strategies for international education

TERTIARY KNOWLEDGE + INNOVATION PROGRAM

- promote development of MOUs with institutions such as UWA and Curtin Uni to deliver environmental, recreational, horticultural and tourism-based research

DEVELOPMENT OF DESIGNATED EDUCATIONAL SPACES

- outdoor - spaces for tour group gathering and storytelling
- indoor - adaptive reuse of the Forts buildings to optimise use and participation

SITE-WIDE SIGNAGE + INTERPRETATION STRATEGY

- connecting stories, interpreting information, connecting view lines to adjacent precincts and neighborhoods
- key themes based around: Our Environment, Noongar Menang Culture, Colonial Heritage, Military Heritage

LOCAL COMMUNITY

'FRIENDS OF THE MOUNTS' GROUP

- recognise the high community values of the site
- conservation and bushland management
- horticulture and education
- volunteer support networks and special projects

VOLUNTEER GUIDES PROGRAMME

- establish a volunteer guides programme

ONGOING STAKEHOLDER + COMMUNITY ENGAGEMENT

- foster a sense of community ownership and public empowerment
- refresh and expand communication strategy
- collaboration and partnership focus with community groups, commercial enterprises and government agencies, such as: Kings Park and Botanical Gardens, UWA, WA Museum, National Archives, Australian War Memorial Arts organisations
- broaden global references and context for international visitors

IDENTITY + BRANDING

REDEFINE THE BRAND

- understand the perception of the Albany Heritage Precinct and develop a strong cohesive brand (such as 'The Mounts') that incorporates a collection of existing brand elements
- develop communications, marketing and promotions plan aligned with Albany Visitor Centre and Amazing South Coast brand

VISITOR ORIENTATION + WAYFINDING STRATEGY

- redefine the existing hierarchy of park 'gateway' entry and points of arrival, activity nodes and network of destinations to help user navigation and promote and improve the visitor experience

CONNECTING DESTINATIONS + ATTRACTIONS

- explore ways to integrate adjacent neighborhood reserves and connect to places, such as; Visitor Centre

REGIONAL BOTANIC GARDENS

DISPLAY GARDENS + COLLECTIONS

- staged implementation of curated, developed display gardens aligned with best practice, celebrating local and regional landscape biodiversity

BOTANIC GARDENS INFRASTRUCTURE

- provide a node of consolidated infrastructure to support the working operations and management of the Botanic Gardens, may include: a visitor hub, glass houses and plant nursery

NATURAL RESERVES + LANDSCAPE MANAGEMENT

- conserve and enhance natural bushland and rare granite outcrop environments aligned with best practice natural reserve management practices
- good future management promoting sustainable practices and value systems for caring for country, completing the biological inventory, researching the major threatening processes and monitoring and taking appropriate action to conserve those species and communities most at risk

NATURE PLAY

NATURE PLAYGROUND AT PRINCESS ROYAL FORTRESS

- development of a place to play and promote development of nature based activities, located at Princess Royal Fortress in the area of maritime gun artefacts

NATURE-BASED ACTIVITIES + EXPERIENCES

- explore potential for short-term low impact recreational, educational and eco-tourism camping facilities within the Princess Royal Fortress precinct
- programme of inspired outdoor experiences through events, catering for children and family-based activities
- opportunities for nature play in the broader landscape

WATER LINKAGE RECREATION OPPORTUNITIES

- development of marine interface activities i.e. fishing (rock and boat), SUPs, kayaking, swimming, paragliding

NATIONAL ANZAC CENTRE

REFRESH PROJECTS, CONTENT + COLLECTIONS

- review, refresh and improve to ensure interpretative experiences remain relevant, engaging and consistently high quality
- develop and implement cross-promotion strategies in partnership with WA Museum to manage NAC cultural and commemorative assets

CONNECTING PLACES + EXPERIENCES

DRIVING + PUBLIC TRANSPORT EXPERIENCE

- enhance the iconic Marine Drive/Forts Road/Apex Drive/Avenue of Honour driving experiences
- park gateways and orientation nodes, ocean experience lookouts, access ways, pedestrian links

WALKING TRAIL NETWORK

- staged implementation of a walking trail network (renewal/enhancement/new)
- ensure a wide range of experiences for different community members and visitors
- incorporate shared network as appropriate (different users)

MOUNTAIN BIKE TRAIL NETWORK

- staged implementation of the *AHP Trails Network Concept Plan*, as adopted by Council December 2016
- ensure wide range of experiences for different community members and visitors
- incorporate shared network as appropriate (different users)

ICONIC MT ADELAIDE | IRRERUP TRAIL

- circular walk around the summit of Mt Adelaide, providing visitors with a short walk linking historic assets within the Princess Royal Fortress, iconic views and a bushland experience

ICONIC COASTAL TRAIL

- enhance the iconic coastal walk trail from Middleton Beach to the Port and Town Centre, showcasing information and linking sites of natural, cultural and historical significance

CONNECTING TO ADJACENT NEIGHBOURHOODS

- develop physical connections with adjacent neighborhoods, such as Middleton Beach, Town Centre, Lawley Park, Anzac Peace Park, Centennial Park

PUBLIC ART + CULTURE

PLACE VITALITY + EVENTS PROGRAMME

- develop a year round seasonal events, exhibition and place programming strategy specific to the site i.e. 'Festival of the Mounts'
- explore opportunities for the Mounts to mark the bicentennial of the founding of Western Australia's first British Colony in Albany 2026 – a cultural milestone of national significance
- link site-wide projects, events, programmes and initiatives to City-wide arts and culture strategy, incorporating key cultural assets

HERITAGE + CULTURAL SIGNIFICANCE PLAN

- identify cultural and commemorative assets within the precinct and reference to the history of Albany and region, such as: Desert Mounted Corps Memorial, Camp Quaranup, Cemetery, St John's Church, Strawberry Hill Farm, WA Museum and other City Heritage assets
- enhance partnerships and improved access to natural, cultural or heritage sites and associated information
- nominate the place for listing as a national heritage site and a place of outstanding heritage significance to Australia

NOONGAR MENANG CULTURE: ABOUT COUNTRY-BOODJA

- recognising Menang Noongar culture as central to the regions' identity
- promote and support Aboriginal tourism operators, though development of outdoor gathering spaces

DUAL NAMING

- progress and implement dual naming across the Mounts and surrounding landscapes (places, elements, locations)

VISITOR FACILITIES + SITE-WIDE INFRASTRUCTURE

VISITOR + TOURISM SERVICES HUB

- provide a central, well-connected and active arrival and orientation system within Princess Royal Fortress to support visitor operation and tourism product services

VEHICLE ACCESS + PARKING STRATEGY

- protect and provide better accessibility to the site e.g. car/bus parking overflow, entry access turn-around

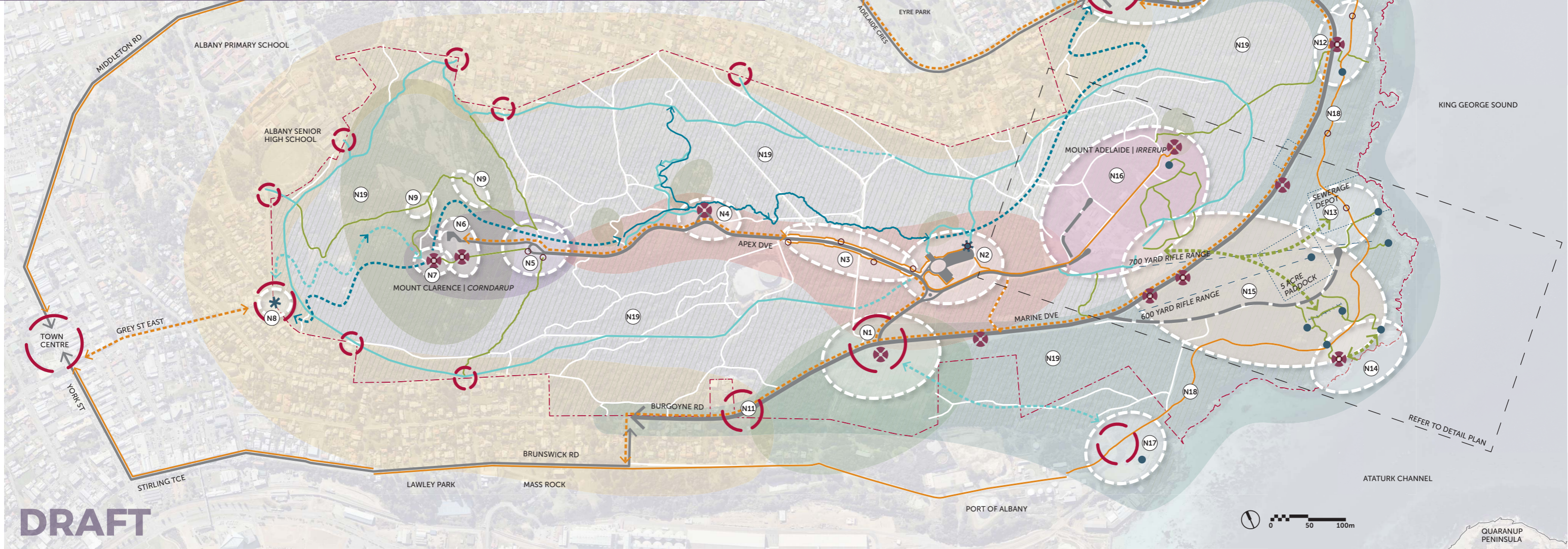
INFRASTRUCTURE UPGRADES + ESSENTIAL SERVICES

- build upon recently completed works to support site activation e.g. footpaths, lighting, bins, seating, shelters

If you would like to participate in a workshop to help prioritise and provide comment on these key projects and initiatives, please register your interest by completing the online survey.

APPENDIX 2

DRAFT KEY PROJECTS + INITIATIVES - SITE PLAN



CHARACTER PRECINCTS

- PRINCESS ROYAL FORTRESS
- THE RIDGE
- DESERT MOUNTED CORP
- GRANITE OUTCROP
- THE RANGE
- COASTAL EDGE + MARINE DRIVE
- PORT INTERFACE
- URBAN EDGE
- BUSHLAND

GENERAL LEGEND

- Existing Shared Track - Unsealed
- Proposed Shared Track Linkage - Unsealed
- Existing Shared Path - Sealed
- Proposed Shared Path Linkage - Sealed
- Existing Walk Track
- Proposed Walk Track Linkage -
- Existing Mountain Bike Trail
- Proposed Mountain Bike Trail Linkage -

- Primary Trail Head
- Existing Track - unclassified. Inc. fire breaks, maintenance tracks and informal tracks.
- Existing Road Linkage
- Proposed Road Linkage
- Site Boundary
- * May include some or all of the following:
- PROPOSED ACTIVITY NODE - Increased amenity, planting, safety + security, events, integrated public art, interpretation, education + wayfinding, technology.
- GATEWAY - Define character of key entry | gateway nodes. Signage, dual naming, lighting, integrated art, interpretation and wayfinding
- LOOKOUT - Improved parking + amenities, themed interpretation, maintain views with vegetation management
- HERITAGE SITE | ENVIRONMENTAL FEATURE - To be protected and enhanced
- SHELTER OR REST POINT - Shelter, seats, bins, interpretation and wayfinding

KEY PROJECTS + INITIATIVES

- N1 PARK ENTRY | GATEWAY NODE**
Visitor info and opportunity for a commercial venture. Views to Port landscape. Roundabout at intersection. Connection to coastal walk trail.
- N2 CARPARK + TRAILS HUB NODE**
Improved wayfinding at roundabout. Enhance trail hub. Improve wayfinding and promote links to the mounts and surrounding precincts. Public toilet facilities and commercial opportunity. Consolidate existing trails and develop a series of walk trail loops suitable for different walking abilities. Environmental and Menang interpretation along walks. Named walks to create a strong identity.
- N3 AVENUE OF HONOUR NODE**
Recognised as a contemplative and respectful space. Appropriate events and programming. Slow traffic, improve facilities, encourage visitors to dwell. Improve maintenance of trees and plaques. Integrated public art opportunities.
- N4 APEX DRIVE LOOKOUT NODE**
Wayfinding and interpretation. Integrated art and storytelling opportunities ie. the 1843 Dale Panorama.
- N5 CARPARK NODE**
Resolve parking conflicts, slow traffic and improve vehicle circulation. Upgrade public toilet facility. Improve lighting and night safety.
- N6 DESERT MOUNTED CORPS MEMORIAL NODE**
Improve wayfinding, signage and interpretation. Connect and consolidate existing trails, create network of walk trail loops suitable for different walking abilities.
- N7 PADRE WHITE LOOKOUT NODE**
Integrated art and storytelling opportunities ie. the 1843 Dale Panorama. Improve wayfinding and interpretation. Connect and consolidate existing trails, create a network of walk trail loops suitable for different walking abilities.
- N8 TRAIL HEAD | ENTRY NODE**
Gateway entry point with wayfinding and signage.
- N9 GRANITE CROSSING NODES**
Consolidate and upgrade existing trails. Boardwalk sections of the trail over sensitive granite outcrops to prevent erosion and ensure protection. Interpretation of natural environment including granite outcrop ecosystem, geology and Menang cultural heritage. Establish links to broader landscape through storytelling and orientation - Dog Rock, Bluff Rock,

- N10 ELLEN COVE NODE**
Park entry point | Trail head. Wayfinding and interpretation. Integrated art opportunities. Facilities and commercial opportunity for water based recreational activities.
- N11 MARINE DRIVE**
Entry statement at either end of Marine Drive. Resurface road with red asphalt to announce arrival into a tourist precinct. Slow traffic speeds. Reinstatement of historic gates - precise location TBC. Shared path along length of Marine Drive linking Lawley Park and Town Centre to Middleton Beach.
- N12 ROTARY LOOKOUT NODE**
Upgrade existing carpark and lookout facilities. Wayfinding and interpretation.
- N13 COASTAL PARKLAND NODE**
Opportunity for Coastal Parkland and Botanic garden in degraded historic sewerage depot site and 5 acre paddock. Vehicle access from Marine Drive and carpark. Picnic, shelter and BBQ facilities.
- N14 POINT KING LIGHTHOUSE + COASTAL NODE**
Upgrade lookout and provide coastal link from lookout and Ataturk Memorial to Point King Lighthouse.
- N15 RIFLE RANGE NODE**
Refer to Proposed Initiatives Detail Plan
- N16 PRINCESS ROYAL FORTRESS | MT ADELAIDE NODE**
Refer to Proposed Initiatives Detail Plan
- N17 PORT COTTAGES NODE**
Opportunity for a commercial venture. Carpark and gateway entry point for coastal walktrail.
- N18 COASTAL WALK TRAIL**
Upgrade of the coastal walk trail, linking sites of natural, cultural and historical significance with interpretation, seating nodes and public art.
- N19 BUSHLAND AREAS**
Protection of areas of excellent vegetation condition and granite outcrop management. Conserve bushland buffer around site perimeter. Repurpose existing degraded areas as activity nodes. Consolidate and upgrade existing trails to prevent erosion and ensure protection of bushland and granite outcrops. Environmental and Menang interpretation opportunities.

* Proposed initiatives to minimise impacts on flora and fauna, in particular threatened and priority species, will be in accordance with the City of Albany Environmental Code of Conduct.



GENERAL LEGEND

- Existing Shared Track - Unsealed
- Proposed Shared Track Linkage - Unsealed
- Existing Shared Path - Sealed
- Proposed Shared Path Linkage - Sealed
- Existing Walk Track
- Proposed Walk Track Linkage -
- Existing Mountain Bike Trail
- Proposed Mountain Bike Trail Linkage -
- Primary Trail Head
- Existing Track - unclassified. Inc. fire breaks, maintenance tracks and informal tracks.
- Existing Road Linkage
- Proposed Road Linkage
- Site Boundary

* May include some or all of the following:

- PROPOSED ACTIVITY NODE -**
Increased amenity, planting, safety + security, events, integrated public art, interpretation, education + wayfinding, technology.
- GATEWAY -**
Define character of key entry | gateway nodes. Signage, dual naming, lighting, integrated art, interpretation and wayfinding
- LOOKOUT -**
Improved parking + amenities, themed interpretation, maintain views with vegetation management
- HERITAGE SITE | ENVIRONMENTAL FEATURE -**
To be protected and enhanced
- SHELTER OR REST POINT -**
Shelter, seats, bins, interpretation and wayfinding

* Proposed initiatives to minimise impacts on flora and fauna, in particular threatened and priority species, will be in accordance with the City of Albany Environmental Code of Conduct.

KEY PROJECTS + INITIATIVES

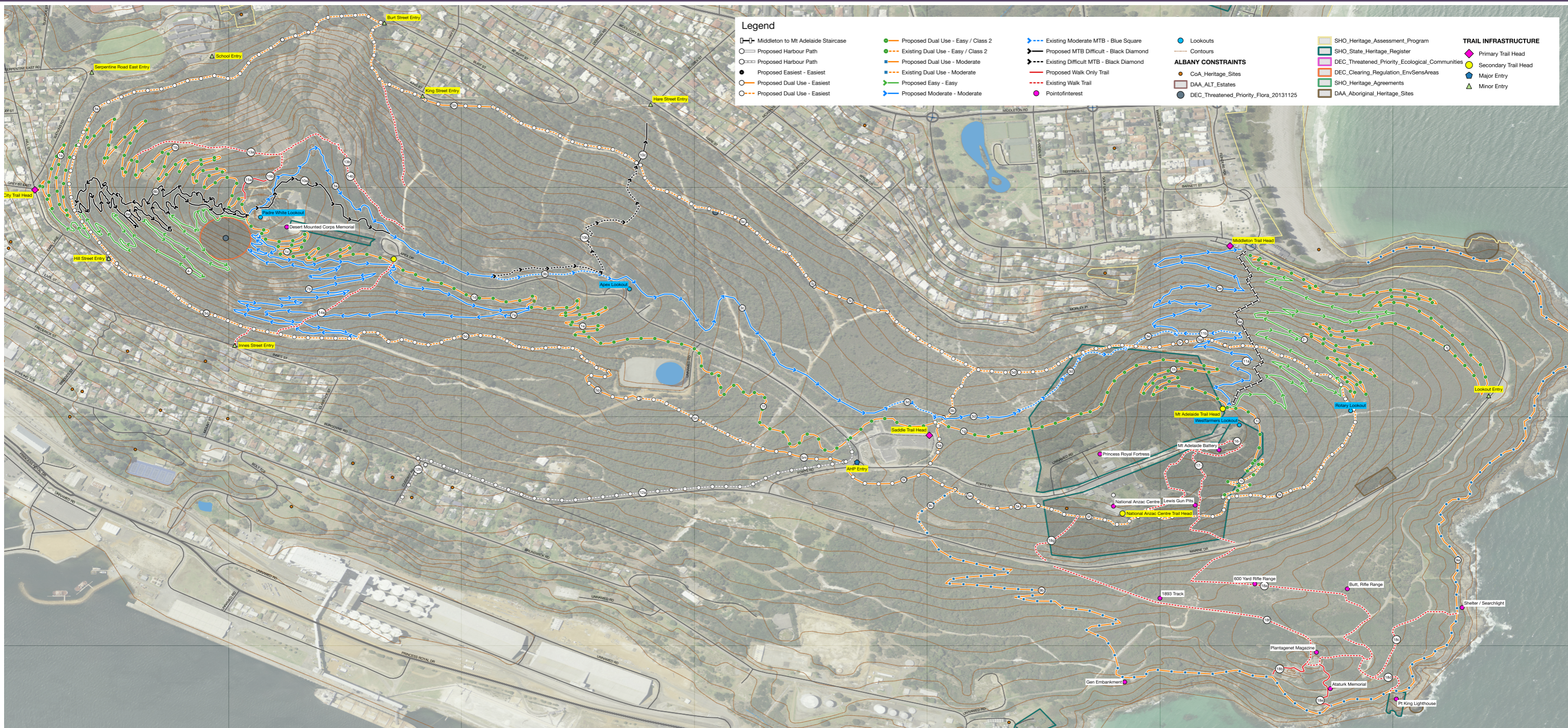
- 1 PARKING NODE**
Increase parking capacity.
Improve vehicle access & circulation, lighting & wayfinding.
Improve landscape amenity.
- 2 TURN AROUND**
Introduce traffic circulation & flow control measures which connects to parking upgrades & preserves setting of historic parade ground.
Entry Statement - planting & signage
- 3 FORTS STORE**
Protect, interpret & repurpose historic buildings/ building sites for display & commercial opportunities.
- 4 COMMERCIAL NODE**
Create a primary welcome & orientation point with central wayfinding feature.
Improve landscape amenity & potential Botanic Garden
- 5 NATIONAL ANZAC CENTRE**
- 6 AMPHITHEATER NODE**
Improve connection to Lower Forts precinct through botanic garden & interpretive trails.
Improve pedestrian access & amenity for all users.
Enhance existing & develop new lookout & interpretation nodes.

- 7 GATHERING / EVENT NODE**
Formalise central point for group orientation, education, tours, school groups.
Introduce more outdoor shade.
Display seasonal exhibitions & collections.
- 8 PARADE GROUND NODE**
Improve historical interpretation
Enhance historical setting by removing permanent parking & consider returning to original size
- 9 RECREATION NODE**
Opportunity to create a new play space catering for family activities, based on interpretive themes.
Seating, lighting, pedestrian & wayfinding amenity.
- 10 LEWIS GUN PITS NODE**
Enhance interpretation & viewing experience of dual gun emplacements.
Improve pedestrian & wayfinding amenity.
- 11 GUN EMPLACEMENT NODE**
Enhance interpretation & viewing experience of dual gun emplacements.
Improve view lines at gun lookouts to ocean, harbour & lower forts precinct.
Improve pedestrian amenities & interpretive trails.

- 12 CONVOY LOOKOUT NODE**
Opportunities for Menang cultural interpretation removed from direct military context. Interpret story of Irrerup ie. the 1843 Dale Panorama.
Develop trails which may be self-guided and/or guided.
- 13 GALLERY | EXHIBITION NODES**
Protect, interpret & repurpose historic buildings/ sites for display, commercial opportunities, community use.
- 14 MENANG CULTURAL NODE**
Establish an orientation & storytelling point for cultural tours & interpretation, with improved facilities & landscape amenity; reestablishing Connection to Country
- 15 COMMERCIAL NODE**
Protect, interpret & repurpose historic buildings/ sites for display, commercial opportunities, community use.
- 16 CAMPING NODE**
Recreational & educational camping facilities.
Develop interpretation of historic campgrounds.
- 17 ICONIC MT ADELAIDE | IRRERUP TRAIL**
Loop walk trail linking heritage and bushland assets.
- 18 RIFLE RANGE + BOTANIC GARDEN NODE**
Utilise previously cleared 5 acre paddock. Selected vegetation clearing, opening up significant view scapes.

- WALL + HISTORIC OUTLET PIPE
- SHELTER + SEARCH LIGHT
- KING GEORGE SOUND
- HISTORIC TRAM LINE
- GUN EMPLACEMENT
- POINT KING LIGHTHOUSE
- MAGAZINE + ENGINE ROOM
- LOOKOUT
- ATATURK MEMORIAL

- Footbridge crossing over Marine Drive.
Play spaces and commercial opportunities.
Upgrade and maintain heritage features.
- 19 MARINE DRIVE LOOKOUTS**
Upgrade facilities, interpretation and wayfinding to enhance and promote the drive experience.
- 20 LOWER ACCESS ROAD + CARPARK**
Open existing 1893 fire access track to provide vehicle access to Lower Forts and Coastal Parkland.
Vehicle turn around and carpark.
- 21 COASTAL PARKLAND NODE**
Opportunity for Coastal Parkland and Botanic garden in degraded historic sewerage depot site.
Vehicle access from Marine Drive and carpark.
Picnic, shelter and BBQ facilities.
Upgrade of the coastal walk trail, linking sites of natural, cultural and historical significance with interpretation, seating nodes and public art.
- 22 LOWER FORTS NODE**
Upgrade and maintain heritage features.
Provide connection between Princess Royal Fortress and Lower Forts.
- 23 POINT KING LIGHTHOUSE + COASTAL NODE**
Upgrade lookout and provide coastal link from lookout and Ataturk Memorial to Point King Lighthouse.



ALBANY HERITAGE PARK - TRAILS PROJECT

OVERVIEW

DEVELOPMENT OF TRAILS IN THE AHP WAS IDENTIFIED AS A PRIORITY PROJECT IN THE ALBANY TRAIL HUB STRATEGY ADOPTED BY COUNCIL IN 2015 BASED ON:

- Proximity to City Centre
- Good opportunities for multiple user groups
- Topography highly suitable for diverse range of trails and it already has significant amounts of shared trails (20km +) that have been used by walkers, runners and mountain bike riders for many years.

The City is now working to implement the priority trails identified in the AHP Trails Concept Plan adopted by Council in December 2016.

GENERAL PRINCIPLES

IN THE ALBANY TRAIL HUB STRATEGY THE DEVELOPMENT OF THE TRAILS IS BASED ON THE FOLLOWING GENERAL PRINCIPLES:

- Development of Code of Conduct and yield hierarchy
- Where logical separate user groups to improve the visitor experience and address possible safety issues.
- Purpose designed single track and single direction trails to guide users to their appropriate trails
- Rationalisation and consolidation of current trails - Alignments to be based on ground conditions, not necessarily the current alignments
- Provide multiple access points to the trail system

- Mountain Bike trails to be built to current best practice standards as outlined in the WA Mountain Bike Management Guidelines to ensure sustainability and safety standards

ENVIRONMENTAL + CULTURAL SURVEYS

SINCE THE ADOPTION OF THE AHP TRAILS CONCEPT PLAN IN DECEMBER 2016 AS PART OF THE TRAIL PLANNING PROCESS ADDITIONAL DUE DILIGENCE CHECKS HAVE BEEN COMPLETED INCLUDING:

- Aboriginal heritage survey - that have identified the opportunity for Aboriginal observers to be used during construction works and possible dual naming of trails.

- Ongoing monitoring of trail impacts on Western Ringtail Possums – which has currently shown no measurable impact on Possums near the current trails including the newly constructed Pilot trail
- Rare Flora Surveys – which have guided the propose trail alignments
- Broad scale and targeted Dieback Surveys – which are guiding trail location and design of trail features to minimise soil movement along the trails

None of the further survey work undertaken has identified any significant constraints that preclude the progress of the project.

However the results of the surveys have allowed modifications to be made during the detailed trail planning stage of the project that will further assist in protecting the environmental and cultural values of the AHP from impacts of unplanned recreational use.