

Middleton Beach Foreshore Enhancement Project

VISION

REGIONAL WESTERN AUSTRALIA'S MOST ICONIC + ACTIVE BEACH PRECINCT, OFFERING
WORLD CLASS COMMUNITY, COMMERCIAL + CIVIC AMENITY ON THE PRISTINE SOUTH COAST.

OBJECTIVES

The Middleton Beach Foreshore Enhancement Concept Plan sets out to achieve the following:

SITE DEFINITION

Enable the broader vision to be realised, inclusive of the broader precinct adjacent to the Middleton Beach Activity Centre.

TECHNICAL RESILIENCE

Development of integrated strategies for servicing, essential infrastructure, engineering, and coastal adaptation and protection (sea level change). This includes risk to existing or proposed infrastructure resulting from storm surge or sea level rise.

STRATEGIC APPROACH

Take a strategic short, medium and long term approach to design and planning around coastal adaptation, urban growth, transport, infrastructure, climate change, and implementation actors; support the planning approval process of the Middleton Beach Activity Centre (MBAC); and be

consistent with previously approved City plans, strategies and policies.

PUBLIC REALM

Develop integrated design strategies for high quality public spaces and facilities for all users which are safe, accessible, attractive, comfortable, flexible (event capability), well connected, and long lasting.

COMMUNITY FOCUS

Build on the objectives established by community engagement undertaken for the MBAC (LandCorp) and the Coastal Parks Strategy (City); and engage and inform the local community at agreed project milestones.

PARTNERSHIPS

Work in partnership with key stakeholders throughout the process, taking a collaborative approach to design, planning, implementation and management decisions.

ECONOMIC VIABILITY

Support the development aims and investment strategy of the MBAC and the broader precinct (including existing commercial land uses), and use the Enhancement Plan to advocate for funding and implementation support.

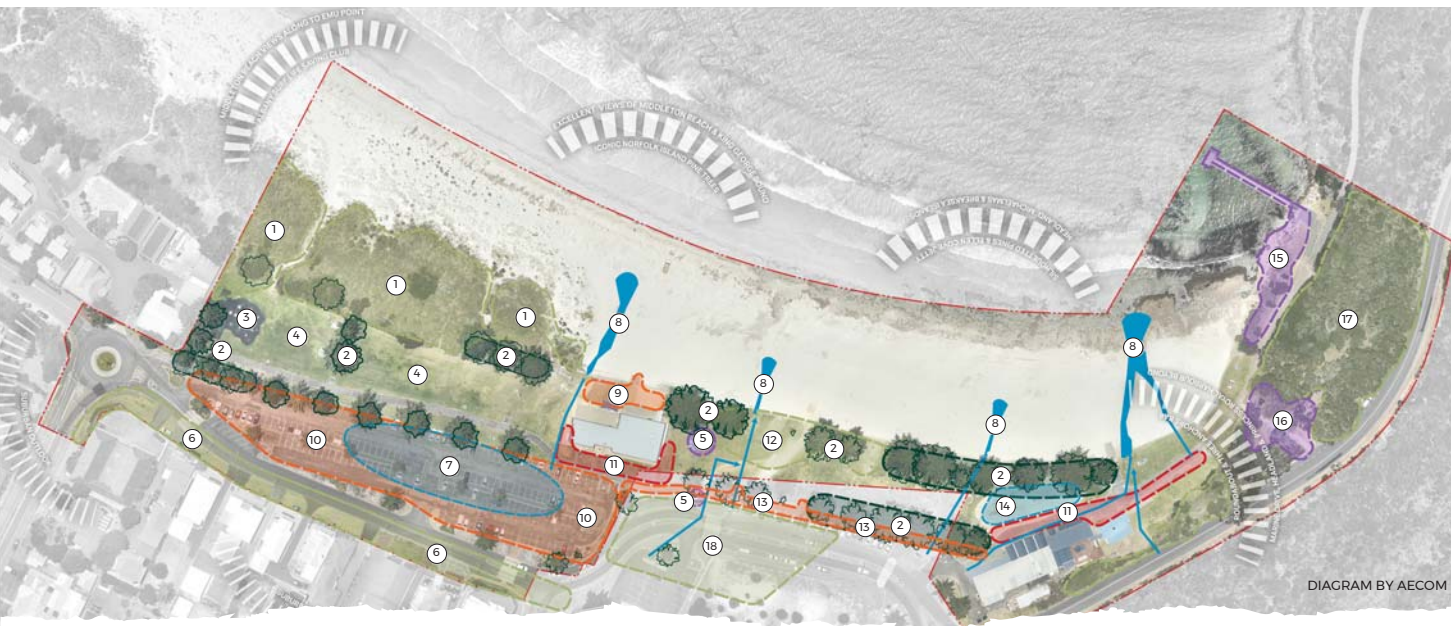
SENSE OF PLACE

Protect, enhance and communicate the cultural and heritage values of the locale; create memorable, diverse and authentic experiences which express civic pride and encourage repeat visitation.

DESIGN AIMS

To achieve the design principles a set of objectives has been identified;

- Establish a strong connection to the previous geomorphological and ecological histories of the site and its context; and in this way establish an 'urban ecology' to the precinct.
- Where appropriate, create a uniform 'shared public domain' where the distinction between trafficable and pedestrian spaces is only subtly defined (i.e. Flinders Parade).
- Provide a public domain that responds to the climate conditions of Albany through the provision of shaded and comfortable areas and use of deciduous/ evergreen trees where solar access is desirable.
- Ensure that there is a seamless integration between interior and exterior spaces, expressed primarily through ground plane materiality, texture, colour and pattern.
- Ensure that there is a strong connection to the broader Middleton public domain through the connection of view lines and the selection of details, materials and vegetation.
- Integrate art work consistent with landscape themes.
- Provide flush pedestrian orientated surfaces.



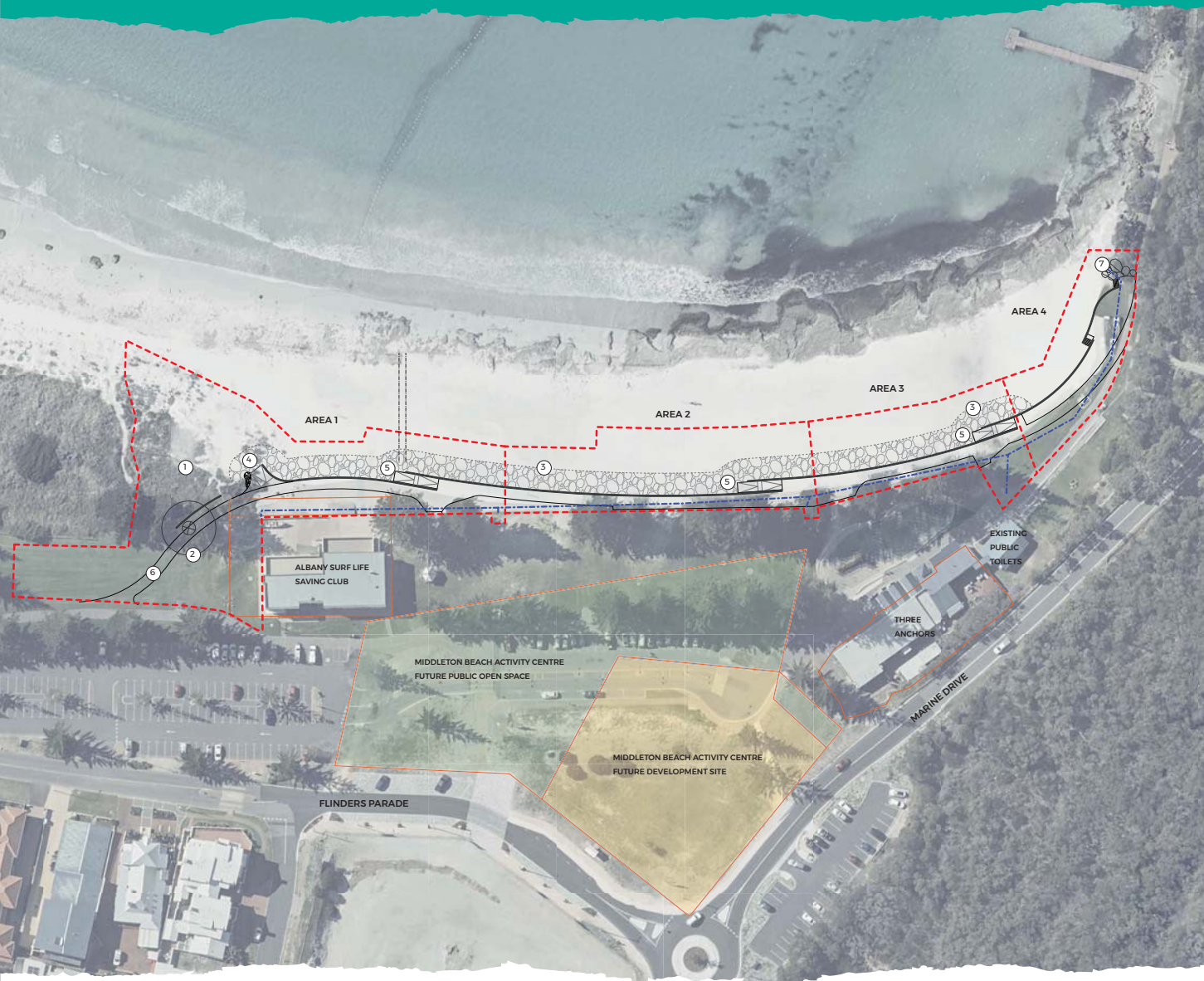
SITE ANALYSIS + CONSTRAINTS

- | | |
|--|---|
| ① ACCRETING DUNE SYSTEM, WITH WEEDS | ⑩ LIMITED SHADE + SCREENING TO CARPARK |
| ② DEEP SHADE UNDER EXISTING TREES, PREVENTS TURF FROM ESTABLISHING - REDUCING AMENITY + EXPOSING ROOTS | ⑪ NARROW FRONTAGE LIMITS VISIBILITY OF CYCLISTS |
| ③ LIMITED PASSIVE SURVEILLANCE TO PLAYGROUND | ⑫ SAND ACCRETION TO TURF |
| ④ LIMITED + AGING RECREATION FACILITIES | ⑬ PAVEMENTS CRACKED + UNEVEN |
| ⑤ BBQ + BUS SHELTERS AGING + CORRODED | ⑭ DRAINAGE ISSUES AROUND CAFE + PLAYGROUND |
| ⑥ TURFED + ELEVATED VERGES WITH NO STREET TREES | ⑮ ROCKS, TREES + JETTY PROVIDE VISUAL AMENITY |
| ⑦ CARPARK SUBJECT TO FLOODING | ⑯ SHELTERED POPULAR PICNIC DESTINATION WITH SHADE + ELEVATED VISTAS |
| ⑧ UNTREATED DRAINAGE OUTFALL, PUBLIC HEALTH RISK + BEACH EROSION | ⑰ BUSHLAND WITH LIMITED WEEDS |
| ⑨ LIMITED ACCESS FOR SURF CLUB OPERATIONS | ⑱ MIDDLETON BEACH ACTIVITY CENTRE SITE |

PROJECT OVERVIEW



Middleton Beach Foreshore Enhancement Project



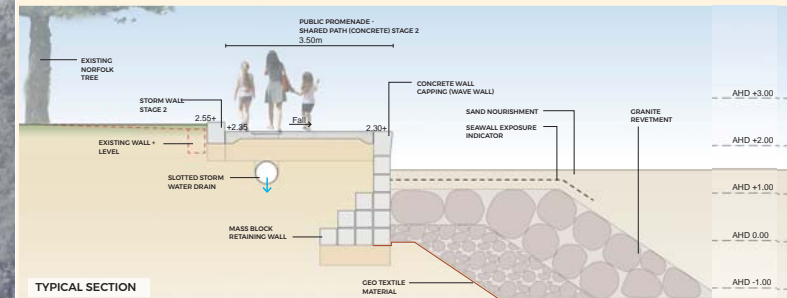
COASTAL PROTECTION DESIGN INTENT

The function of the design is to protect the foreshore during extreme storm events and reduce windblown sand issues. The foreshore protection is comprised of:

- A buried rock revetment (or rock wall);
- A vertical block retaining wall component to increase the crest level of foreshore;
- Stormwater drainage;
- Compacted backfill behind retaining wall;
- Sand nourishment on beach, up to 700mm; and
- Concrete promenade shared path and storm wall - Stage 2.

LEGEND

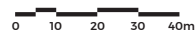
- ① DUNE RE-VEGETATION + STABILISATION
- ② EXISTING TREE TO BE REMOVED
- ⑤ EXTENT OF PROPOSED SEA WALL + BURIED ROCK REVETMENT
- ④ BEACH ACCESS RAMP - VEHICLES
- ⑤ BEACH ACCESS RAMP - PEDESTRIANS
- ⑥ PROMENADE ALIGNMENT - COMPACTED LIMESTONE ROAD BASE (STAGE 1)
- ⑦ STORMWATER OUTLET + GRANITE BOULDERS
- BELOW GROUND SLOTTED STORMWATER DRAIN
- STAGE 1 WORKS SITE BOUNDARY
- LEASE | LOT BOUNDARY



TYPICAL SECTION



STAGE 1: COASTAL PROTECTION CIVIL WORKS



Middleton Beach Foreshore Enhancement Project



LEGEND

- | | | | |
|---|---|---|--|
| ① | EXISTING DUNE TO BE MODIFIED - RE-VEGETATION + STABILISATION | ⑪ | POSSIBLE FUTURE CARPARK EXPANSION |
| ② | PROPOSED SURF CLUB CITY MAINTENANCE VEHICLE BEACH ACCESS RAMP | ⑫ | PROPOSED PICNIC SHELTERS |
| ③ | PROPOSED PEDESTRIAN BEACH ACCESS RAMP | ⑬ | PROPOSED OPEN SPACE - GRASSED PARKLAND + EVENT SPACE |
| ④ | SEASONAL WHEEL CHAIR ACCESSIBLE PATH TO SWIMMING ENCLOSURE | ⑭ | PROPOSED OUTDOOR SEATING AREA |
| ⑤ | PROPOSED SEA WALL + BURIED ROCK REVETMENT | ⑮ | MODIFY EXISTING PLAYGROUND |
| ⑥ | PROPOSED PUBLIC PROMENADE - SHARED CONCRETE PATH 3.5m WIDE | ⑯ | EXISTING PUBLIC TOILETS |
| ⑦ | PROPOSED BEACH ACCESS STEPS | ⑰ | PROPOSED TURF TERRACES |
| ⑧ | STORMWATER DRAINAGE OUTLET | ⑱ | SHARED SERVICE VEHICLE PEDESTRIAN ZONE - ACCESS TO THREE ANCHORS |
| ⑨ | EXISTING VOLLEY BALL COURTS (ADJUSTED POSITIONING) | ⑳ | EXISTING FOOTPATH |
| ⑩ | EXISTING CARPARK | | |

TREE PLAN



Middleton Beach Foreshore Enhancement Project



LEGEND

- ① PROPOSED SURF CLUB | CITY MAINTENANCE VEHICLE BEACH ACCESS RAMP
- ② PROPOSED PEDESTRIAN BEACH ACCESS RAMP - TIMBER
- ③ PROPOSED PEDESTRIAN BEACH ACCESS RAMP
- ④ SEASONAL WHEEL CHAIR ACCESSIBLE PATH TO SWIMMING ENCLOSURE
- ⑤ EXTENT OF BURIED ROCK REVETMENT
- ⑥ PROPOSED PUBLIC PROMENADE - SHARED CONCRETE PATH 3.5m WIDE
- ⑦ PROPOSED OPEN SPACE - GRASSED PARKLAND + EVENT SPACE
- ⑧ PROPOSED PICNIC SHELTERS
- ⑨ EXISTING DUNE TO BE MODIFIED - REVEGETATION + STABILISATION
- ⑩ POSSIBLE FUTURE CARPARK EXPANSION
- ⑪ OLD FLINDERS PARADE TO BE REMOVED



**DETAIL AREA PLAN:
ALBANY SURF LIFE SAVING CLUB**



Middleton Beach Foreshore Enhancement Project



LEGEND

- | | |
|--|--|
| ① PROPOSED OUTDOOR SEATING AREA | ⑨ EXISTING VOLLEY BALL COURTS (ADJUSTED POSITIONING) |
| ② MODIFY EXISTING PLAYGROUND | ⑩ PROPOSED OPEN SPACE - GRASSED PARKLAND + EVENT SPACE |
| ③ PROPOSED TURF TERRACES | ⑪ PROPOSED PICNIC SHELTERS |
| ④ PROPOSED GARDEN - ROCKS + NATIVE PLANTING | ⑫ SHARED SERVICE VEHICLE PEDESTRIAN ZONE - ACCESS TO THREE ANCHORS |
| ⑤ PROPOSED TIMBER DECK | ⑬ EXISTING FOOTPATH |
| ⑥ PROPOSED PUBLIC PROMENADE - SHARED CONCRETE PATH 3.5m WIDE | ⑭ OLD FLINDERS PARADE TO BE REMOVED |
| ⑦ PROPOSED PEDESTRIAN BEACH ACCESS RAMP | |
| ⑧ PROPOSED EXTENT OF BURIED ROCK REVETMENT | |



DETAIL AREA PLAN: THREE ANCHORS | PLAYGROUND

