



# Council Management Plan

# **CITY MOUNTS MANAGEMENT PLAN MAY 2006**

© City of Albany 2006

---

Adoption Date: 18/04/06  
Adoption Reference: OCM Item 11.4.2  
Review Date: 30/06/2011  
Maintained By: Executive Director Development Services  
Document Reference: MAN194/NMP086020

102 North Road, Yakamia WA 6330  
PO Box 484, Albany WA 6331  
Tel: (+61 8) 9841 9333  
Fax: (+61 8) 9841 4099  
staff@albany.wa.gov.au  
www.albany.wa.gov.au

## Review Position and Date

Executive Director Development Services on or before 30/06/2011

## Associated Documents

Nil

## Amendments

ORDINARY COUNCIL MEETING MINUTES – 18/04/06  
\*\* REFER DISCLAIMER \*\*  
DEVELOPMENT SERVICES REPORTS

Item 11.4.2 continued.

**MOVED COUNCILLOR PAVER  
SECONDED COUNCILLOR WALKER**

**THAT Council;**

- i) **modify the comment on submission 23 and adjust clause 6.7 of the City Mounts Management Plan, at paragraph 3, to read *“Conflict between trail cyclists and walkers has been identified as an issue in need of resolution. The current level of interaction is considered low and a stakeholder group will be formed to resolve current and future management and construction arrangements. The number of cyclists is expected to increase and trailhead signage should include a ‘code of conduct’ for trail users”*; and**
- ii) **subject to the changes mentioned above and outlined in the Schedule of Submissions, adopt the City Mounts Management Plan and seek to implement the Plan through grant funding, future Council budgets and with the assistance of volunteer support.**

**MOTION CARRIED 14-0**



*City Mounts Management Plan*

CITY OF ALBANY

MAY 2006

# CITY MOUNTS MANAGEMENT PLAN









## **CITY MOUNTS MANAGEMENT PLAN**

Mount Melville, Mount Clarence, Mount Adelaide and Bluff Rock

**MAY 2006**

### **Plan and Figures prepared by:**

City of Albany  
102 North Road  
Yakamia Western Australia 6330  
PO Box 484  
Albany WA 6331

### **Concept Plans prepared by**

Thomas Design  
120 Lancaster Road  
Albany Western Australia 6330



# Table of Contents

<b>1.0</b>	<b>BACKGROUND</b> .....	1
<b>2.0</b>	<b>INTRODUCTION</b> .....	1
	2.1 Place in the Landscape .....	1
	2.2 Previous Planning and study .....	1
	2.3 Noongar Culture .....	3
	2.4 Military History .....	3
	2.5 Natural Environment .....	3
	2.6 Recreation and Tourism .....	4
<b>3.0</b>	<b>COMMUNITY CONSULTATION</b> .....	4
	3.1 Development of the DRAFT .....	4
	3.2 Further Consultation and Discussion .....	5
<b>4.0</b>	<b>RECOMMENDATION PRIORITISATION AND LIFE OF PLAN</b> .....	5
<b>5.0</b>	<b>OVER RIDING OBJECTIVE</b> .....	5
<b>6.0</b>	<b>GENERIC RECOMMENDATIONS</b> .....	6
	<b>Mount Melville, Mount Clarence, Mount Adelaide, Mount Martin and Bluff Rock</b>	
	6.1 Indigenous Joint Naming and Protection of Aboriginal Heritage Sites .....	6
	6.2 Community Involvement .....	7
	6.3 Fire Management and Emergency Access .....	7
	6.4 Threatened Species Management .....	9
	6.5 Weed Management .....	9
	6.6 Bushland Rehabilitation .....	12
	6.7 Trail Use and Maintenance .....	13
	6.8 Streetscape Micro-corridor Linkages .....	14
	6.9 Domestic Dogs and Cats in the City Mounts .....	14
	6.10 Feral Animals in the City Mounts .....	15
	6.11 Dieback Management .....	15
	6.12 Rubbish Dumping .....	15
	6.13 Tourism Development .....	16
	6.14 Abseiling Management .....	17
	6.15 Asset Registration .....	17
<b>7.0</b>	<b>RECOMMENDATIONS FOR MOUNT MELVILLE</b> .....	17
	7.1 Public Vehicle Access, Parking and Node Enhancement .....	18
	7.1.1 Melville Drive .....	18
	7.1.2 Maxwell Street .....	18
	7.1.3 Serpentine Road .....	18
	7.2 Quarry .....	20
	7.3 Trail Rationalisation and Alignment .....	21
	7.4 Interpretive Signage .....	21
	7.5 Proposed Land Tenure Changes .....	22
<b>8.0</b>	<b>RECOMMENDATIONS FOR MOUNT CLARENCE</b> .....	22
	8.1 Public Vehicle Access, Parking and Node Enhancement .....	23
	8.1.1 Apex Drive .....	23
	8.2 Trail Rationalisation and Alignment .....	25
	8.3 Interpretive Signage .....	26
	8.4 Dedicated All Terrain Cycle Trail .....	27
	8.5 Anzac Day Commemoration Service .....	27
	8.6 Proposed Land Tenure Changes .....	28





<b>9.0</b>	<b>RECOMMENDATIONS FOR MOUNT ADELAIDE</b> .....	29
9.1	Public Vehicle Access, Parking and Node Enhancement .....	29
9.1.1	Forts Road .....	29
9.1.2	Marine Drive .....	29
9.2	Trail Rationalisation and Alignment .....	31
9.3	Interpretive Signage .....	31
9.4	Coastal Safety Signage.....	32
9.5	Port Control Tower.....	32
<b>10.0</b>	<b>RECOMMENDATIONS FOR BLUFF ROCK</b> .....	33
10.1	Public Vehicle Access, Parking and Node Enhancement .....	33
10.2	Trail Rationalisation and Alignment .....	33
10.3	Rock Graffiti .....	34
10.4	Proposed Land Tenure Changes .....	34
<b>TABLES</b>		
1.	Reserve Information .....	2
2.	Prioritisation Categories.....	5
3.	Weeds Mapped on City Mounts Reserves .....	11
4.	Management Options for Mount Melville Quarry.....	20
5.	Proposed Land Tenure Changes – Mount Melville .....	22
6.	Water Corporation Reserves on Mount Clarence that may be affected by a Change in Tenure ....	28
<b>FIGURES</b>		
1.	Mount Melville Reserves .....	37
2.	Mount Clarence Reserves .....	38
3.	Mount Adelaide Reserves .....	39
4.	Bluff Rock Reserves .....	40
5.	Mount Melville Management .....	41
6.	Mount Clarence Management .....	42
7.	Mount Adelaide Management .....	43
8.	Bluff Rock Management .....	44
9.	Weed Mapping – Mount Melville .....	45
10.	Weed Mapping – Mounts Clarence and Adelaide.....	46
11.	Weed Mapping – Bluff Rock.....	47
12.	Suggested Streetscape Micro-corridor Linkages .....	48
13.	John A. Barnseby Lookout Tower Concept Plan.....	49
14.	‘Kardarup Lookout’ Concept Plan.....	50
15.	‘Munarch Park’ Concept Plan .....	51
16.	Proposed Land Tenure Changes – Mount Melville .....	52
17.	Proposed Land Tenure Changes – Mount Melville .....	52
18a.	Avenue of Honour Concept Plan .....	53
18b.	Avenue of Honour Concept Plan (Cross Section) .....	54
19a.	‘Memorial Place’ Concept Plan .....	55
19b.	‘Memorial Place’ Concept Plan (Cross Section) .....	56
20a.	Desert Mounted Corps Memorial Concept Plan.....	57
20b.	Desert Mounted Corps Memorial Car Park Concept Plan.....	58
21.	‘Padre White Lookout’ Concept Plan .....	59
22.	‘Apex Lookout’ Concept Plan .....	60
23.	Desert Mounted Corps Memorial Approach Steps Concept Plan.....	61
24.	Proposed Land Tenure Changes – Mount Clarence .....	62
25.	Forts Road Car Park Concept Plan.....	63
26.	‘Direction Lookout’ Concept Plan .....	64
<b>Appendix 1</b>		
	Recommended Colour & Material Palette .....	66
<b>References</b> .....		
		69





## 1.0 BACKGROUND

The City of Albany has recognised the importance of sustainably managing the City Mounts reserves given their ever-increasing popularity and accessibility. The planning for these reserves was prioritised through the City of Albany Reserves Planning Framework (2005).

The City Mounts Management Plan provides an up to date, coordinated response to management issues and is an essential planning tool for the City of Albany to ensure continued and sustainable public use of several of its most important and accessible recreation reserves. Recommendations within this management plan will be prioritised within the City of Albany Reserves Master Plan and implemented based on that prioritisation or as opportunity arises.



Plate 1: *Kennedia coccinea*

## 2.0 INTRODUCTION

### 2.1 Place in the landscape

The City Mounts Management Plan includes Mount Melville, Mount Clarence, Mount Adelaide, and Bluff Rock inclusive of all reserves listed in Table 1 and presented in Figures 1,2,3 and 4. The City Mounts provide a unique scenic backdrop to Albany's city centre and harbours. The sloping swale between Mount Melville and Mounts Clarence and Adelaide cradles the town, and in association with Princess Royal Harbour influences inner city development. Bluff Rock is an obvious granite knoll at the eastern end of North Road and adjacent Mounts Clarence and Adelaide. Mounts Clarence and Adelaide provide extensive and majestically panoramic views across King George Sound.

### 2.2 Previous planning and study

Previous management planning and investigative studies have been undertaken for some of these reserves (Howard & Sandiford 1991, Howard 1992, Green Skills 2001, Friends of Mount Adelaide and Mount Clarence Reserves 2002 and 2002 Braun 2002). The City Mounts have also been considered in the City of Albany Draft Greenways Plan (ATA Environmental 2002) and Trails Master Plan (Maher Brampton and Associates 1999). Heritage conservation plans have been developed for the Princess Royal Fortress and surrounding areas (Lawrance 2002) and Point King Lighthouse (Bodycoat, 1995, Nayton 1998). There are three colonial heritage sites cited in the City of Albany Municipal Heritage Inventory (Heritage TODAY, 2000) within Mount Clarence and Mount Adelaide, with Mount Melville being cited holistically. Significant natural sites listed in the Inventory include Bluff Rock and Balston Gardens – Mount Clarence. The history and naming of Balston Gardens is unknown (M. Traill pers. comm.).





**Table 1. Reserve Information**

Reserve No.	Purpose	Area (hectares)	Status
<b>Mount Melville</b>			
R21300	Recreation	12.6	Small area cleared for parkland, mostly natural bushland
R29474	Public Recreation and Pistol Club	0.8	Quarry site, partially natural bushland
R2681	Public Park	54.3	Natural bushland
Freehold A114772	Title held	0.7	Disturbed, some natural bushland
R44409	Public Utility Services	0.6	Disturbed natural bushland. Drain line
<b>Mt Clarence</b>			
R2682	Public Park	114.3	Natural bushland
R575 (In trust to CoA since 1883)	Public Garden	2.2	Natural bushland, some evidence of disturbance
*R27116 (Commonwealth Reserve partly managed by CoA)	Anzac War Memorial	0.3	*State Heritage Listed Memorial
R16692 (Commonwealth Reserve partly managed by CoA)	Telecommunications	0.6	Mostly developed
<b>Mt Adelaide</b>			
*R27068	Recreation and Parklands	84.7	*Natural bushland containing State Heritage Listed Point King Lighthouse Ruins
*R38226	Parklands and Recreation	16.7	*Natural bushland containing State Heritage Listed Albany Forts
R26149	Recreation	3.2	Natural bushland, partly developed
R44720	Community and Telecommunication Services	0.09	Partially cleared
<b>Bluff Rock</b>			
R37685	Public Recreation	0.6	Natural bushland
R24409	Recreation	1.05	Natural bushland
R5155	Government Requirements	0.56	Natural bushland and granite protrusions
R35179	Park	0.05	Partially cleared
City of Albany Freehold Lot 42 (A111320)	Title held	0.9	Natural bushland And granite protrusions with steep slopes
City of Albany Freehold Lot 20 (A141119)	Title held	0.2	Natural bushland (granite protrusions and steep slopes)
R33664 (no vesting)	Pedestrian Access Way	0.03	Thoroughfare to Geake Street. Related to R35179
State of WA Freehold			Thoroughfare to Andersen Street. Cleared
	<b>Total area</b>	<b>~240 ha</b>	

\* NOTE: Any works or proposals regarding these sites including interpretive signage must be referred to HCWA for comment



### 2.3 Noongar Culture

The City Mounts, and particularly Mounts Melville and Adelaide, are very important to Noongar culture and heritage. An ethnographic survey (Brad Goode & Assoc. 2005) has identified significant Aboriginal heritage sites within these Mounts that should be protected from disturbance. Sites include namma holes, lizard traps, traditional camp sites and rock features of significance. R26203, vested to the Aboriginal Lands Trust and managed by the Albany Aboriginal Corporation, is enclaved within the Mount Melville reserve system at its southwest corner. At present there is no plan in place for this reserve although a land assessment report (Aboriginal Lands Trust, 2003) has been prepared. The Albany Aboriginal Corporation has also indicated its intention to pursue vesting of R26204 currently vested to the Albany and Districts SPCA for the purpose of Animal Welfare.

### 2.4 Military History

The preservation, at Mount Clarence, of the memory of the ANZAC tradition is of growing significance. The Desert Mounted Corps Memorial is an internationally and nationally important monument to fallen Australian and New Zealand soldiers of the first World War and represents an important part of the Anzac spirit in Australia. The summit above the Memorial is believed to be the site of the first Dawn Anzac service in 1930, held by Padre Arthur White, and the tradition is continued strongly each year on April 25th, the day of the Gallipoli landings in 1915. The Avenue of Honour at the base of Apex Drive is also a place of commemoration, with plaques placed under approximately 180 trees for each casualty of the First and Second World Wars and Korean and Vietnam Wars who enlisted in Albany and surrounding districts. Apex Drive was built through the initiation of the Apex Club of Albany, the dedication of returned soldiers and the community in which they lived. Opened in 1955 it remains a monument to the good will and dedication of a community brought together by the calamity of war.

There is a pressing need to increase Mount Clarence's capability to host the increasing number of people who come to the City each year to attend the Anzac Commemoration Dawn Service.



Plate 2: Desert Mounted Corps Memorial  
Mt Clarence

The Princess Royal Fortress was built in 1893 and decommissioned in 1956. It is now an interpretive museum for Albany's early military history. The Fortress extends to batteries and gun emplacements strategically placed throughout the Mount Adelaide reserve. Conservation plans have been developed to ensure the integrity of these structures is maintained into the future (Lawrance 2002).

### 2.5 Natural Environment

The City Mounts reserve system is a large area of natural bushland in the heart of Albany's city centre and represents an important natural vegetation corridor link in conjunction with Torndirrup National Park and the proposed Gull Rock National Park. The coastal corridor link across the south coast of Western Australia is the strongest east-west vegetation link in southern Australia and has national and international significance (Department of Conservation and Land Management 2003).



Importantly, the City Mounts offer important urban bushland refuge. Native flora is in relatively good condition given the proximity of the reserves to the City centre. However weeds have intruded into disturbed areas particularly along roadsides, firebreaks and trails. Native fauna has probably been impacted upon early in Albany's development through land clearing for the townsite, although possums, bandicoots and bush rats are still relatively common. Domestic cats and feral animals are a threat to native fauna in most reserves but particularly those within the town centre.

## 2.6 Recreation and Tourism

The City Mounts have been favoured recreation and tourism destinations since Albany was colonised. However, modern day use of the reserves is far more diverse and prolific than at any time in the past. Community consultation has identified accessibility of the reserves as the most important value to protect (City of Albany, 2004). People have indicated that they enjoy getting away from their busy lives to enjoy the scenery and nature of the City Mounts without having to travel far from home.

The City Mounts present significant tourism opportunities for the Albany community through presentation and interpretation of military history and indigenous culture. These opportunities are explored through concept planning for the developed nodes within each Mount.

The City Mounts are under increasing recreational and tourism pressure that requires proactive forward planning and management. There is a need for thoughtful development of nodes to ensure they can cope with increasing use.



Plate 3: Scenic all-terrain cycling is a favoured recreation activity in the Mounts

## 3.0 COMMUNITY CONSULTATION

Ongoing discussion with important stakeholders, community groups and individuals has been an important part of the development of the City Mounts Management Plan. It is the City of Albany's intention that planning be acceptable to the wide range of interests that exist in relation to the City Mounts. It will no doubt be difficult to meet all the needs of all the people, but planning has progressed with as much consultation and discussion as possible to ensure the plan is developed to an acceptable and equitable level, ready for implementation.

### 3.1 Development of the DRAFT

In May 2004 fifty-one people from a broad range of backgrounds attended a public forum to discuss values, issues and suggest management solutions (City of Albany, 2004). This workshop formed the basis for the content of the management plan and has been referred to continually.

Extensive discussions were undertaken with the Apex Club of Albany and the Albany Returned and Services League (RSL) in regard to the upgrade of memorial areas at Mount Clarence. The aspirations of these organisations has guided the development of concept planning in this area.

The Rotary Club of Albany has also been referred to during the development of concept planning for the lookout on Marine Drive Mount Adelaide because of the club's involvement in building the structure in 1975.

Noongar consultation was undertaken with the guidance of a consulting anthropologist, the City of Albany Aboriginal Liaison Officer, the Department of Indigenous Affairs, the Albany Aboriginal Corporation and the Southern Aboriginal Corporation. A meeting of Noongar representatives provided valuable information and feedback on concept planning and this and subsequent meetings also identified opportunities to improve wider community awareness and respect for Noongar culture in regard to the City Mounts. Concept planning for areas within Aboriginal Heritage Sites has been referred to the Albany Aboriginal Heritage Reference Group at all stages.



In addition, written submissions and phone calls to the City of Albany Parks and Reserves Planner were received on an ongoing basis from people with an interest in the Mounts.

### 3.2 Further Consultation and Discussion

The DRAFT City Mounts Management Plan will have a comment period of 8 weeks. Comments will be invited from all people, organizations and agencies with an interest in the City Mounts. These comments will be collated into an Analysis of Submissions and constructive or necessary changes made.

After this time the City Mounts Management Plan will be placed before Council for adoption into the City of Albany Reserves Master Plan.

## 4.0 RECOMMENDATION PRIORITISATION AND LIFE OF PLAN

Planning recommendations within the City Mounts Management Plan have been assigned a prioritisation based on a suggested time frame. These time frames are estimates only and implementation and resource allocation will be driven by the City of Albany Reserves Master Plan, Council discretion or as opportunity arises.

Table 2. Prioritisation Categories

Priority	Definition
HIGH	Implementation suggested within 0-3 yrs
MEDIUM	Implementation suggested within 0-5 yrs
LOW	Implementation suggested within 0-10 yrs
ONGOING	Requires ongoing effort to be achieved

It is expected this plan will have a maximum life of 10 years after which time it will be evaluated and reviewed.

All recommendations in this plan are the responsibility of the City of Albany to implement. Responsibility for implementation of recommendations is separated into four City of Albany service areas:

- **General Management Services** – Under the direct control of the Chief Executive Officer.

- **Development Services** – Under the direct control of the Executive Director of Development Services and the Chief Executive Officer.
- **Corporate and Community Services** – Under the direct control of the Executive Director of Corporate and Community Services and the Chief Executive Officer.
- **Works and Services** – Under the direct control of the Executive Director Works and Services and the Chief Executive Officer.

The first named service area, against each recommendation, will have primary responsibility for implementation but will be required to liaise with other service areas named against that recommendation.

Community groups, organizations, agencies and individuals are encouraged to liaise with the City to develop partnerships for implementation works.



Plate 4: City of Albany Bush Care Assistants at work

## 5.0 OVER RIDING OBJECTIVE

To equitably manage the social, environmental, educational, economic and aesthetic values of the City Mounts reserve system for the benefit of the Albany and Western Australian community and in keeping with their designated purpose.

(Refer to Table 1 for Reserve Purpose)





## 6.0 GENERIC RECOMMENDATIONS

### Mount Melville, Mount Clarence, Mount Adelaide and Bluff Rock

The discussions and recommendations made below are generic. That is they are consistent across all reserves except where stated otherwise.

#### 6.1 INDIGENOUS JOINT NAMING AND PROTECTION OF ABORIGINAL HERITAGE SITES

**Objective: To protect Aboriginal heritage sites and recognise the cultural and spiritual links that Noongar people have to the land.**

Noongar people have long identified parts of the City Mounts as important to their heritage and culture.

Many of the City's reserves are culturally important to Noongar people because they are generally least disturbed in the landscape. It is inappropriate for specific site information to be presented within this management plan but all care will be taken to protect registered sites. An ethnographic survey of City of Albany reserves has identified many heritage sites that will be protected from disturbance as best as possible and in perpetuity (Brad Goode & Assoc. 2005) in addition to sites already identified by the Department of Indigenous Affairs. It could be expected that awareness of Aboriginal heritage sites may grow over time as new information comes to light.

Notably, the whole of the Mount Melville reserve system is to be a registered Aboriginal Heritage Site. The reserve system, and all other registered heritage sites throughout the City of Albany are protected under the *Aboriginal Heritage Act 1972*. The City of Albany has particular responsibilities under this Act as land manager and will refer to the Noongar community as necessary when undertaking management works. This management plan, when final, must be submitted to the Department of Indigenous Affairs through an *Aboriginal Heritage Act* Section 18 Application. This application must be approved prior to any works beginning in registered Aboriginal heritage sites within the City Mounts reserves.

Complementary to this the City of Albany Aboriginal Accord (City of Albany, 2003) has identified joint-naming of reserves as a specific strategy to improve recognition of the traditional and cultural links that Aboriginal people have with the land, and to ensure those links continue.

#### Recommendations

Submit this management plan as a Section 18 Application under the Aboriginal Heritage Act 1972. Liaise with the Albany Aboriginal Heritage Reference Group as necessary.

**When:** HIGH

**Who:** Development Services, Corporate and Community Services.

Refer to this management plan at all times when implementing work in the Mount Melville reserve system.

**When:** ONGOING

**Who:** Works and Services, Development Services, Corporate and Community Services, General Management Services

Cross-reference all management activities in the City Mounts with Ethnographic Survey and Department of Indigenous Affairs Aboriginal Heritage Sites GIS Database.

**When:** ONGOING

**Who:** Works and Services, General Management Services, Corporate and Community Services, Development Services

Adopt joint-naming:

- Mount Melville – Kardarup  
[place of the racehorse goanna]
- Mount Clarence – Corndarup  
[place of the red berry]
- Mount Adelaide – Irrerup  
[place near the sea]
- Bluff Rock – Barmup  
[place of trees]

and apply to the Geographic Names Committee for acceptance. Liaise with Department of Indigenous Affairs and the Albany Aboriginal Heritage Reference Group.

**When:** HIGH

**Who:** Development Services





Recognise Noongar naming for the following:

Lion Street Parkland to be named Munarch Park [Links to figure 15]  
[Munarch = White-tailed Black Cockatoo]

Water tank lookout to be named Kardarup Lookout [Links to figure 14]

**When:** HIGH

**Who:** Development Services, Works and Services, Corporate and Community Services

Ensure a Noongar representative is present during all intrusive management works undertaken in heritage sites within the City Mounts. Liaise with Albany Aboriginal Heritage Reference Group.

**When:** ONGOING

**Who:** Works and Services, Development Services, General Management Services

Submit a Section 18 Application for works not defined in this management plan. Liaise with the Albany Aboriginal Heritage Reference Group.

**When:** ONGOING

**Who:** Works and Services, Development Services, General Management Services

## 6.2 COMMUNITY INVOLVEMENT

**Objective: To encourage community involvement in the implementation of the City Mounts Management Plan.**

The Albany community has always had a strong interest in the City Mounts and the City of Albany has attempted to encourage community involvement over many years. Groups such as the Friends of Mount Clarence and Adelaide, The Apex Club of Albany and the RSL have over many years worked with the City in the upkeep of the reserves within their areas of interest. However, without management plans in place it has been difficult to proactively encourage community groups and individuals to become involved in on-ground outcomes.

This plan provides new opportunities for community groups, special interest groups and individuals to work with the City of Albany in a cohesive manner to ensure the City Mounts are well managed and cared

for. Without this support the management of such large reserves is extremely onerous.

### Recommendations

Encourage community involvement and partnership in the implementation of the City Mounts Management Plan where appropriate or necessary.

**When:** ONGOING

**Who:** Works and Services, Development Services, Corporate and Community Services, General Management Services

Organise and coordinate regular community involvement days in each of the City Mounts for environmental management works in particular.

**When:** ONGOING

**Who:** Works and Services

## 6.3 FIRE MANAGEMENT AND EMERGENCY ACCESS

**Objective: To identify an appropriate fire and emergency response for the City Mounts reserve system.**

In the event of a fire, Fire and Emergency Services (FESA) take control of coordinating involvement and the development of fire fighting strategies. The City of Albany assists this process under FESA's direction.

The primary focus of fire management in the City Mounts is to protect life and property, with a secondary, but no less important focus of bushland preservation. As the greatest risk to life and property is apparent around the peripheral boundaries of the reserves where homes are in close proximity, these areas will be given priority fire management attention. Emergency access will be gained through gates located at strategic points within and on the peripheral boundary of the reserves. Fire breaks and emergency access points presented in figures 5,6,7 and 8 will remain as primary management points. However, the designation of fire breaks and access points in this plan does not preclude the construction of other necessary access during an emergency situation.

Fire breaks will be maintained throughout the City Mounts to enable efficient and effective fire and emergency access. In the main these fire breaks will be slashed rather





than cleared. Fire breaks will define cells of a size that are manageable for fire agencies to facilitate controlled/prescribed burns. An Operational Fire Management Program will guide prescribed burning and maintenance of breaks, assess potential impact on flora and fauna and will outline a fire management regime that has as minimal an impact as possible while protecting life and property.

Homes immediately surrounding the City Mounts are considered most at risk from wildfire. Highest risk streets are:

#### **MOUNT MELVILLE**

- Serpentine Road
- Robinson Street
- Johnson Street (south)
- Bay Street
- Cliff Street
- View Street
- Grey Street
- Carlisle Street
- Melville Drive
- Serpentine Crescent
- Dicks Street
- Sherratt Street
- Maskill Place

#### **MOUNT CLARENCE**

- Hay Street
- Burt Street
- Thomas Street
- Burgoyne Street
- Brunswick Street
- Cuddihy Avenue
- Innes Street
- Earl Lane
- Watkins Road

#### **MOUNT ADELAIDE**

- Hare Street
- Morley Place
- Checkers Walk
- Wylie Street (East)
- Marine Drive
- Adelaide Terrace (East)
- Marine Terrace (South)

#### **BLUFF ROCK**

- Collingwood Road (West)
- Beresford Road
- Anderson Place
- Bathurst Street
- Tassel Street
- North Road (East)

#### **Recommendations**

Prepare Five year Fire Management Programs for Mount Melville, Mount Clarence, Mount Adelaide and Bluff Rock detailing proposed seasonal fire prevention and fire break and access maintenance. Reference to be given to figures 5,6,7 and 8. [Links with 6.4 Threatened Species Management]

**When:** HIGH

**Who:** Development Services, Works and Services

Implement Five-year Fire Management Program in liaison with Fire and Emergency Services.

**When:** ONGOING

**Who:** Development Services, Works and Services

Erect fire risk warning signs at the entrance to all reserves.

**When:** HIGH

**Who:** Development Services

Increase fire prevention awareness of all residents in high risk streets identified above through a FESA supported education program and in liaison with Fire and Emergency Services.

**When:** HIGH

**Who:** Development Services

Develop a Fire Management Protocol between City of Albany and Fire and Emergency Services to assist with the protection of declared flora and fauna and known heritage sites.

**When:** HIGH

**Who:** Development Services



*Plate 5: Wildfire can threaten life, property and natural values*





## 6.4 THREATENED SPECIES MANAGEMENT

**Objective:** To protect native flora and fauna from disturbance as required under the Western Australian Wildlife Conservation Act 1950 and Commonwealth Environmental Protection and Biodiversity Conservation Act 1999.

Threatened flora and fauna in Western Australia is protected under the Wildlife Conservation Act 1950 (WC Act) and the Environmental Protection and Biodiversity Conservation Act 1999 (EPBC Act). The WC Act is regulated by the Department of Conservation and Land Management and the EPBC Act is regulated by the Commonwealth Department of Environment and Heritage. All land managers have a responsibility to ensure adequate protection of threatened species in keeping with these acts.

Threatened flora has been located and identified within the City Mounts reserves. It is inappropriate to detail their location within this management plan so as to continue their protection.

Known threatened flora within the reserves:

- *Stylidium plantagineum*  
(Plantagenet Trigger Plant)
- *Caladenia hariingtoniae* ms  
(Pink Spider Orchid)
- *Thysanotus isantherus*
- *Thomasia discolor*
- *Thomasia solanacea*
- *Spyridium spadiceum*
- *Chorizema reticulatum*  
(Showy Flame Pea)

Threatened fauna is also found in the City Mounts. Very little is known about the population dynamics or movement of this fauna. Known resident and transient threatened fauna in the reserves:

- *Pseudocheirus peregrinus*  
(Western Ring-tail Possum)
- *Calyptorhynchus latirostris*  
(Short-billed Black Cockatoo aka Carnaby's Cockatoo)
- *Calyptorhynchus baudinii*  
(Long-billed Black Cockatoo aka Baudins Cockatoo)

### Recommendations

Liaise with Department of Conservation and Land Management to monitor and survey the presence and health of threatened flora.

**When:** ONGOING

**Who:** Works and Services

Develop an understanding of fire responses and management of threatened flora. Liaise with Department of Conservation and Land Management [Links with Section 6.3 Fire Management and Emergency Access and 6.5 Weed Management]

**When:** ONGOING

**Who:** Works and Services, Development Services

Cross-reference all management and development activities with threatened flora database to avoid disturbance or intrusion. Liaise with Department of Conservation and Land Management.

**When:** ONGOING

**Who:** General Management Services, Corporate and Community Services, Works and Services, Development Services

Support community-initiated flora and fauna surveys that may assist to locate threatened species as permitted by Department of Conservation and Land Management.

**When:** ONGOING

**Who:** Works and Services, Development Services

## 6.5 WEED MANAGEMENT

**Objective:** To reduce the presence and impact of weeds in the natural and built environment of the City Mounts reserve system.

Weed mapping was undertaken within the City Mounts reserve system in late 2004 and is presented in figures 9,10 and 11. This information is held in the City of Albany GIS database and will be updated on a five yearly basis for auditing of effort and weed presence.





Weed management in the City Mounts has been progressed steadily by City officers, training organisations and voluntary community groups with gradual success being experienced. The City of Albany weed management approach has generally been in keeping with the Environmental Weed Strategy for City of Albany Reserves (City of Albany 2005).

In general, weed management occurs in areas of good vegetation condition working outward to areas of poor condition. While this is the general rule, it is also necessary to integrate weed management with maintenance of areas of high public use, for example lookouts, to ensure the aesthetic values of the reserves can be maintained.

Weed mapping for the City Mounts has highlighted that weeds are occurring mainly in areas that have experienced disturbance such as roadsides, trails, car parks, quarries and cleared fire breaks. Because of the high occurrence of weeds in disturbed areas, it is expected they will receive priority attention and ongoing maintenance so that dense areas of weed do not spread into nearby areas.

It is also essential that bushland quality be improved when weeds are removed. In most instances natural vegetation will re-establish on its own over time. But in very disturbed areas induced rehabilitation may need to occur in the form of mulching with natural materials, seeding and/or the introduction of seedlings. Potential rehabilitation areas have been highlighted in figures 5,6,7 and 8.

Weeds found in the reserves are presented in Table 3. Although not complete, it provides a good indication of the main weeds within the City Mounts reserve system.

### Recommendations

Undertake a five yearly review of weed mapping in the City Mounts Reserve system. Prepare a comparison of effort and weed presence as a measure of success over time

**When:** 2009 and 2014

**Who:** Works and Services

Cross-reference weed management planning with the planning recommendations of the City Mounts Management Plan, Five Year Operational Fire Management Programs and trail maintenance plans to ensure activities and approaches are compatible and complimentary.

**When:** ONGOING

**Who:** Works and Services, Development Services

Undertake comprehensive weed management effort along disturbed edges as per weed mapping and schedule maintenance periods to ensure effectiveness of effort.

**When:** ONGOING

**Who:** Works and Services

Schedule weed management effort at all points of high public use to ensure aesthetic values of the reserves are maintained.

**When:** ONGOING

**Who:** Works and Services

Integrate rehabilitation planning with weed management in highly disturbed areas where natural vegetation may not re-establish without inducement.

**When:** ONGOING

**Who:** Works and Services

Progress weed management in the City Mounts to maintenance level in as short a time as possible. Schedule annual maintenance review.

**When:** ONGOING

**Who:** Works and Services

Support and facilitate community group and individual involvement in weed management, and seek to undertake weed awareness and management training with all community groups with an interest in the City Mounts eg. Albany Bushcarers Group, Friends of Mt Clarence/Adelaide, Apex Club of Albany, Albany Aboriginal Corporation.

**When:** ONGOING

**Who:** Works and Services





**Table 3. Weeds Mapped on City Mounts Reserves in 2004**

COMMON NAME	SCIENTIFIC NAME	Mt Adelaide & Clarence	Mt Melville	Bluff Rock
Cootamundra Wattle	Acacia baileyana	√	√	
Sydney Golden Wattle	Acacia longifolia	√	√	√
Blackwood	Acacia melanoxylon	√	√	√
	Acacia paradoxa	√	√	
Golden Wattle	Acacia pycnantha	√	√	
	Acacia sp	√		√
Agapanthus	Agapanthus praecox	√	√	√
Cactus	Agave americana			
Easter Lily	Amaryllis belladonna			
Bridal Creeper	Asparagus asparagoides	√	√	√
	Asparagus sp	√	√	√
	Asparagus sp2	√		
	Bulbous sp	√	√	√
Pigface	Carpobrotus edulis	√		
Valerian	Centranthus sp		√	
Tagasaste	Chamaecytisus palmensis	√	√	√
African Cornflag	Chasmanthe floribunda		√	
	Conifer sp	√	√	
Mirror Plant	Coprosma repens	√	√	√
Cordyline	Cordyline sp	√	√	
Pampas Grass	Cortaderia selloana	√	√	√
	Cotoneaster sp	√	√	√
Couch	Cynodon dactylon	√		
Dolichos Pea	Dipogon lignosus	√	√	√
Yellow-flowered Stickwort	Dittrichea viscosa	√		
	Dodonea sp			√
Loquat	Eriobotrya japonica		√	√
	Eucalyptus sp			√
Broom	Genista canariensis		√	
	Gladiolus undulatus	√	√	
	Juncus microcephalus	√	√	
Lantana	Lantana camara	√	√	
Tangier Pea	Lathyrus tingitanus	√	√	
Victorian Tea-tree	Leptospermum laevigatum	√	√	√
Honeysuckle	Lonicera japonica	√	√	
	Melaleuca sp	√		
Ice Plant	Mesembryanthemum sp		√	
Soursob	Oxalis pes-caprae	√	√	
Rose Geranium	Pelargonium capitatum	√	√	√

(Continued over)



**Table 3. Weeds Mapped on City Mounts Reserves in 2004 (cont.)**

COMMON NAME	SCIENTIFIC NAME	Mt Adelaide & Clarence	Mt Melville	Bluff Rock
Kikuyu	Pennisetum clandestinum	√	√	√
Inkweed	Phytolacca octandra	√		
Radiata Pine	Pinus radiata	√	√	
Sweet Pittosporum	Pittosporum undulatum	√	√	√
Polygala	Polygala myrtifolia	√	√	√
Taylorina	Psoralea pinnata	√	√	√
Blackberry	Rubus sp	√	√	
Holly-leaved Senecio	Senecio glastifolius	√	√	
Canary Creeper	Senecio tamoides	√		
Buffalo	Stenotaphrum secundatum	√	√	
New Zealand Spinich	Tetragonia tetraganoides			
Black-eyed Susan	Thunbergia alata			√
Nasturtium	Tropaeolum majus	√	√	√
Gorse	Ulex europaeus	√	√	√
Blue Periwinkle	Vinca major	√	√	√
	Watsonia sp	√	√	√
Yukka	Yucca aloifolia			
Arum Lily	Zantedeschia aethiopica	√	√	√
Unidentified Grass		√	√	√
Unidentified Tree				√
Unidentified Shrub			√	
Unidentified Ivy		√	√	
Unidentified Pine		√		
Unidentified Groundcover			√	

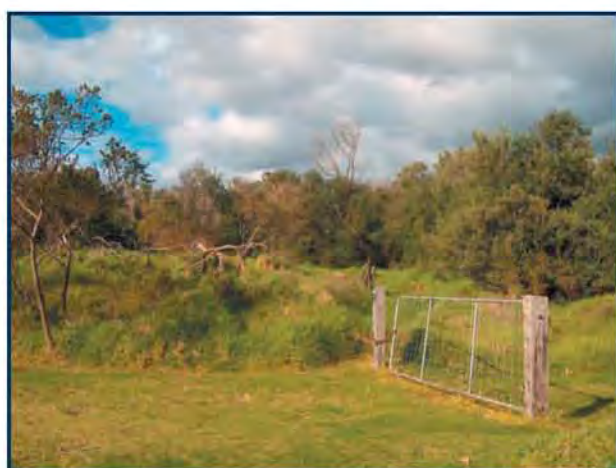


Plate 6: Weeds dominate bushland near 'Munarch Park'

## 6.6 BUSHLAND REHABILITATION

Impacts from various uses over many years,

has resulted in some areas of the City Mounts bushland being cleared or becoming degraded. The area's are generally small and will benefit from rehabilitation attention.

### Recommendations

Prepare a bushland rehabilitation plan for all areas identified as requiring attention (see Figures 5,6,7 & 8)

**When:** MEDIUM

**Who:** Works and Services

Implement the bushland rehabilitation plan as resources allow.

**When:** ONGOING

**Who:** Works and Services

**Note:** Plant material should be sourced to minimise the introduction of non local genetic variants.



## 6.7 TRAIL USE AND MAINTENANCE

**Objective:** To provide quality sealed and unsealed trails through the City Mounts Reserves for both walkers and cyclists.

Approximately 25km of sealed and unsealed trails extend through the City Mounts reserve system (refer figures 5,6,7 & 8). Some of these trails have a dual purpose as firebreaks and emergency access and some are low-key nature trails that simply facilitate access through and around the reserves. The trails of Albany are an important tourism drawcard and provide an important recreational outlet for locals and visitors.

Trail maintenance is an ongoing requirement due to the steepness of the reserves, water erosion and the high level of use by both walkers and cyclists.

~~Conflict between trail cyclists and walkers has been identified as an issue in need of consideration. However the level of current and future interaction between these users is considered low and does not warrant separation of use or prohibitions within the life of this plan. Nevertheless, the number of trail cyclists is expected to increase and trailhead signage should include a 'Code of Conduct' for trail cyclists. Trail~~ areas being impacted heavily by trail cyclists will require armouring to reduce erosion.

Motorcycle, car and horse riders are known to enter the reserves. These activities are not permitted and will incur a fine if detected.

Low-key trail markers direct users around most of the trail network but this signage requires review.

### Recommendations

Prepare annual City Mounts trails maintenance plans inclusive of an audit of trail signage in autumn/winter.

**When:** ONGOING

**Who:** Works and Services, Corporate and Community Services

Allocate expenditure for trails maintenance based on annual trails maintenance plans.

**When:** ONGOING

**Who:** Works and Services

Implement City Mounts trails maintenance plans annually in Spring/Summer.

**When:** ONGOING

**Who:** Works and Services

Conflict between trail cyclists and walkers has been identified as an issue in need of resolution. The current level of interaction is considered low and a stakeholder group will be formed to resolve current and future management and construction arrangements. The number of cyclists is expected to increase and trailhead signage should include a 'code of conduct' for all trail users..

**When:** HIGH

**Who:** Development Services

Install small directional signage at head of bike passage to guide riders

**When:** As necessary

**Who:** Works and Services

Include City Mounts trails in tourism promotions and products when possible.

**When:** ONGOING

**Who:** General Management Services, Works and Services, Development Services, Corporate and Community Services.

Develop a 'Code of Conduct' for trail cyclists and include on trailhead signage.

**When:** HIGH

**Who:** Corporate and Community Services, Development Services, Works and Services

Liaise with trail cyclists through bicycle retailers, clubs and schools to raise awareness of their impacts on trails and the 'Code of Conduct'.

**When:** HIGH

**Who:** Corporate and Community Services

Continue to prohibit horse riding, motorcycling and off-road driving in the City Mounts reserves.

**When:** ONGOING

**Who:** Development Services





Trail-head signs, providing information about trail routes, length, time required, degree of difficulty and interesting features to be located at all trail entry points. [refer figures 5,6,7 and 8] Trail-head signs should include 'code of conduct' for cyclists.

**When:** HIGH

Development Services, Works and Services, Corporate and Community Services.

or touch when fully grown and be locally found species.

**When:** MEDIUM

**Who:** Works and Services

Maintain and enhance the native corridor linkage from Mount Adelaide to Middleton Beach coastal reserve.

**When:** ONGOING

**Who:** Works and Services, Development Services

## 6.8 STREETScape MICRO-CORRIDOR LINKAGES

**Objective:** To investigate the creation of vegetated micro-corridor linkage between the City Mounts reserves through streetscaping.

The City Mounts are part of the strongest east-west vegetation corridor link in southern Australia (Department of Conservation and Land Management, 2003). The City of Albany is also located within one of the most biodiverse regions in the world and because this biodiversity is threatened to a high degree the region is considered by the World Conservation Union (IUCN) as a Biodiversity Hotspot. [Australia is a member of this international organization and is a signatory to the Convention on Biological Diversity].

The City Mounts have become small ecological islands in the city landscape. Thoughtful street scaping between the Mounts, Bluff Rock and other nearby reserves could act as micro-corridors, once again linking the bushland within the City.

### Recommendations

Investigate the creation of native corridor linkages between City Mounts reserves and other significant reserves nearby along: [refer figure 12]

- Grey Street East and West
  - Serpentine Road East and West
  - Hay Street and Bluff Street
  - Beauchamp Street and Hanson Street
  - Wittenoom Street to Adelaide Terrace and
  - Golf Links Road
- Canopy of trees or shrubs should overlap

## 6.9 DOMESTIC DOGS AND CATS IN THE CITY MOUNTS

**Objective:** To provide opportunities for animal exercising.

Dog walking is an enjoyable pastime for many walkers accessing the City Mounts. Dogs are welcome in Mount Melville, Mount Adelaide, Mount Clarence and Bluff Rock as long as they are under effective control and remain on trails.

Generally dogs are confined to yards unless accompanied by their owner and as such their activities are generally monitored and controlled. However it is more difficult for cat owners to monitor their pet's activities outside the home. Cats are known to range widely and predate on small native animals such as lizards, snakes, birds and mammals. The impact is difficult to quantify in Albany but research in other parts of Australia has shown the impact of feral animals, and cats in particular, as significant. Examples of this can be found at the following web sites:

[www.deh.gov.au/biodiversity](http://www.deh.gov.au/biodiversity)

[www.nsw.gov.au](http://www.nsw.gov.au)

[www.naturebase.net/projects/west\\_shield\\_article.html](http://www.naturebase.net/projects/west_shield_article.html)

[www.dpiwe.tas.gov.au](http://www.dpiwe.tas.gov.au)

Most cat owners feed their animals well and as such the appetite of a domestic cat for native prey may be limited but cats also hunt for pleasure and may not eat their prey, only kill it. The impact of domestic cats on wildlife can be lessened if owners contain their cats to their properties, or keep their cats inside as much as possible. Some people take the time to teach their cats to walk on leads so they are under supervision when outside the home.





City of Albany is investigating the potential to introduce Local Cat Laws. Local Cat Laws will, if introduced, be enforced by City of Albany Rangers and could result in cat owners becoming more aware of their animal management responsibilities through regulatory processes.

### Recommendations

Raise awareness in the community about the impact of domestic cats on native wildlife.

**When:** HIGH

**Who:** Works and Services

## 6.10 FERAL ANIMALS IN THE CITY MOUNTS

**Objective:** To relay an understanding that feral animal control is difficult in urban areas.

Both domestic and feral animals are impacting on native fauna within the City Mounts. Rabbits may also be impacting on native flora. Feral animals are very difficult to control or eradicate as they are often difficult to catch and baiting for any feral animal within an urban reserve is strictly controlled and unlikely to be approved by the Department of Agriculture (Colin Parry pers. comm.).

### Recommendations

The control of feral animals within the City Mounts will be reviewed on a regular basis.

## 6.11 DIEBACK MANAGEMENT

**Objective:** To minimise the spread of dieback via mechanical vectors.

Dieback is a deadly plant disease caused by Phytophthora pathogens. Phytophthora pathogens are active in the City Mounts and have caused the death of susceptible species in the Proteaceae, Myrtaceae, Papilionaceae, Epacridaceae and Dilleniaceae families.

Areas within the City Mounts most at risk are vehicle tracks and walking and cycling trails. An on-ground management approach to dieback control within the reserves is not practical as the City does not have the resources or will to regulate track or reserve closures due to their high level of use and accessibility.

Nevertheless, care can be taken when introducing soil materials into the reserves to ensure it is not contaminated with dieback. This is reliant on supplier assurances.

### Recommendations

Ensure all introduced building materials are dieback free, particularly those materials used for maintenance of trails, roads, car parks and paths.

**When:** ONGOING

**Who:** Works and Services, Development Services, Corporate and Community Services

## 6.12 RUBBISH DUMPING

**Objective:** To enforce the Litter Act 1979 and reduce rubbish dumping.

Rubbish dumping is not common in the City Mounts, but it does occur. Under Part IV Section 23 of the Litter Act 1979 it is an offence for any person to deposit litter, or cause litter to be deposited, on any land that is not set aside for that purpose. The penalty for rubbish dumping in City of Albany reserves is \$1,000.

### Recommendations

Enforce the Litter Act 1979 to the full force of law and arrange for clean up in as short a time as possible.

**When:** ONGOING

**Who:** Development Services

Encourage community to report rubbish dumping in the City Mounts, particularly if it can lead to prosecution.

**When:** ONGOING

**Who:** Development Services





## 6.13 TOURISM DEVELOPMENT

**Objective: To develop and promote the tourism potential of the City Mounts.**

The City Mounts have significant tourism development potential.

Mount Melville could potentially form the heart of indigenous tourism for Albany from which other opportunities could be developed such as guided tours around the Mount and other significant heritage sites throughout Albany. It envisaged that Mount Melville will be developed as a 'Noongar Outdoor Interpretive Centre'.

Mounts Clarence and Adelaide already hold great tourism potential through the interpretation of military history and the respectful development of interest in the Anzac tradition. This is developed further through this plan [see sections 8.5].

Trail development in all the Mounts also offers great tourism potential. The City of Albany has recently released 'Walking Naturally in Albany – A guide to 20 of the most popular walk trails in the City of Albany' which promotes walk trails and paths already existing in the City Mounts. This publication is expected to increase the popularity of the trails for locals as well as visitors.

Tourism is an important economic driver in Albany and promotion of important and interesting features and attractions contained in the City Mounts can only enhance the benefits.

### Recommendations

Promote the tourism values of the City Mounts through the following themes as opportunity arises:

- Indigenous culture
- military history
- natural environment
- scenery and viewsheds

**When:** ONGOING

**Who:** General Management Services, Development Services, Corporate and Community Services

Encourage and assist the development of Mount Melville as a 'Noongar Outdoor Interpretive Centre'.

**When:** ONGOING

**Who:** General Management Services, Development Services, Corporate and Community Services

Encourage and assist the development of the Anzac tradition in Mounts Clarence and Adelaide.

**When:** ONGOING

**Who:** General Management Services, Development Services, Corporate and Community Services

Encourage and assist the development of economically viable tourism products associated with the City Mounts.

**When:** ONGOING

**Who:** General Management Services, Development Services, Corporate and Community Services

Refer to concept planning contained in the City Mounts Management Plan for the basis of all tourism development and promotion.

**When:** ONGOING

**Who:** General Management Services, Corporate and Community Services, Development Services, Works and Services

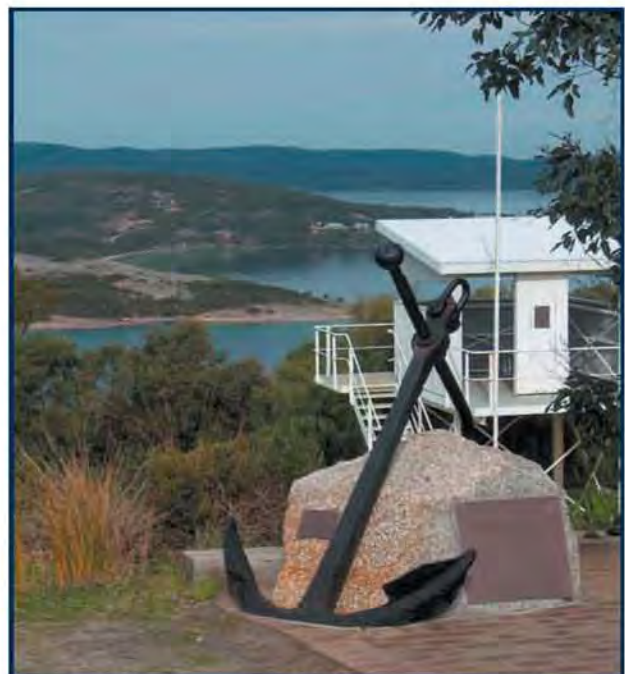


Plate 7: Princess Royal Fortress - Mt Adelaide





## 6.14 ABSEILING MANAGEMENT

**Objective: To regulate abseiling activities in the City Mounts.**

Abseiling is a developing sport and recreational pastime in Albany. The City Mounts offer many attractive high granite faces and boulder climbs.

The City does not regulate recreational abseilers and they undertake their activities at their own risk as do all other users in natural bushland areas.

Fire and Emergency Services use some rock faces to train State Emergency Service volunteers within the City Mounts. This activity is regulated for the Mount Melville quarry and continued use is conditional.

There are no commercial abseiling operations in the City Mounts at present.

### Recommendations

Continue to allow the Fire and Emergency Service to use Mount Melville quarry for abseiling training provided they prepare and update a risk management plan prior to every visit and accept all liability.

**When:** ONGOING

**Who:** Development Services

Prohibit recreational and commercial abseiling in the Mount Melville quarry.

**When:** HIGH

**Who:** Development Services, Corporate and Community Services

Commercial abseiling operations are required to develop an annual risk management plan relevant to their place of operation, accept all liability for their activities and hold all appropriate licensing and qualifications.

**When:** ONGOING

**Who:** Corporate and Community Services, Development Services

## 6.15 ASSET REGISTRATION

**Objective: To maintain a record of all City of Albany assets.**

All City of Albany assets should be recorded for maintenance, life cycle and replacement purposes.

### Recommendations

Record the location, age and type of infrastructure within the City Mounts reserve system.

**When:** HIGH AND ONGOING

**Who:** Works and Services

Determine maintenance and replacement time frames for all management infrastructure through the Reserves Master Plan.

**When:** HIGH AND ONGOING

**Who:** Works and Services

## 7.0 RECOMMENDATIONS FOR MOUNT MELVILLE

The importance of Mount Melville to Noongar Aboriginal people has prevailed since colonial settlement of Albany in 1827. It is one of the most accessible Aboriginal heritage sites in Albany. Mount Melville is expected to be registered under the Aboriginal Heritage Act 1972 in the near future and will then be protected by this law.

The City of Albany has worked closely with representative Noongar families, through the Albany Aboriginal Heritage Reference Group, to understand issues affecting the Mount Melville reserve network, and has sought advice and comment on all planning.

It has been immensely important that planning recommendations made through this chapter of the City Mounts Management Plan work to enhance awareness and engender greater respect for Aboriginal heritage and culture, past and present.

It is envisaged that planning outcomes contained in this chapter will create the opportunity for Mount Melville to become a 'Noongar Outdoor Interpretive Centre'.





## 7.1 PUBLIC VEHICLE ACCESS, PARKING and NODE ENHANCEMENT

**Objective:** To provide adequate vehicle access and parking and to enhance developed nodes throughout the reserve system for the benefit of tourism and public enjoyment.

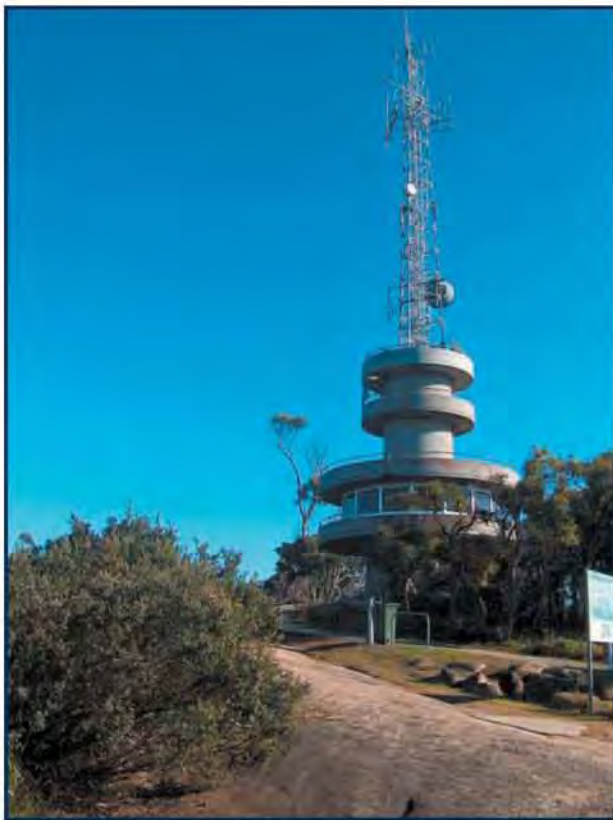


Plate 8: John A Barnesby Lookout Tower

### 7.1.1 Melville Drive

The main vehicle access to Mount Melville is via Melville Drive off Serpentine Road. This leads to a clearing near the Water Corporations water tank that has been traditionally used as an informal lookout. Beyond this is the John A. Barnesby Lookout Tower (the Tower) at the summit.

The clearing at the water tanks has an informal space for car access and has recently been modified during the Water Corporations upgrade of water tanks. The clearing is an entry point to the Mount Melville Circuit Trail. Car parking needs to be formalised in this area and it also needs to be formally named.

The Tower was built in 1977 and named after a former Town of Albany Mayor. The Tower is known locally as the 'Spark Plug' and

sits at the highest point of Mount Melville providing 360 degree views. One level of the Tower has been leased for a small commercial enterprise. Two other levels are freely accessible to the public via an internal staircase. A large, informal gravel car parking space is in place below the lookout tower providing parking for approximately 10-12 cars in a random formation. The Tower is a popular tourist destination and is an obvious and characterising feature of the City of Albany landscape. The Tower structure is maintained through the building maintenance schedule with expenditure being prioritised through the City of Albany Building Master Plan. At present, the tower presents poorly and could be enhanced.

The introduction of an entry statement at the corner of Serpentine Road and Melville Drive would make the reserve more inviting to visitors and tourists and provide a sense of arrival at a place of significance.

### 7.1.2 Maxwell Street

Vehicle access can be gained into the southern part of the reserve via Maxwell Street off Grey Street West. This roadway/track extends through R2681 (Mount Melville) to reserves vested to the Aboriginal Lands Trust (R26203) and Albany SPCA (R26204) and to the Albany Monument Works. This route provides emergency access to the southern portion of Mount Melville.

### 7.1.3 Serpentine Road

An unnamed parkland is located at the most northern extent of Mount Melville within R21300 and across from the intersection of Serpentine Road and Lion Street. At present vehicles are being driven over and through the park and containment is necessary. This parkland requires enhancement to act as the northern gateway to the Mount Melville trail network.

### Recommendations

Consider the introduction of an entry statement at the corner of Serpentine Road and Melville Drive to make the entrance to the reserve more inviting to users and visitors. The entry statement should have a Noongar theme and be constructed of similar materials used in



site development throughout the reserve. Liaison should occur with the Albany Aboriginal Heritage Reference Group.

**When:** MEDIUM

**Who:** Works and Services, Corporate and Community Services

Install signage, showing name of location, at entrance point to each developed node.

- Kardarup Lookout
- John A. Barnesby Lookout
- Munarch Park

**When:** MEDIUM (During implementation of concept planning)

**Who:** Works and Services, Development Services

Install traffic control devices.

**When:** MEDIUM (after implementation of concept planning)

**Who:** Works and Services

Undertake maintenance on John A. Barnseby Lookout Tower as per the Building Masterplan.

**When:** ONGOING

**Who:** Works and Services, Corporate and Community Services

Prepare specifications for the John A. Barnseby Lookout Tower Concept Plan (figure 13).

**When:** HIGH

**Who:** Works and Services, Development Services, Corporate and Community Services, General Management Services

Implement the John A. Barnseby Lookout Tower Concept Plan based on specifications. Engage a project manager to oversee landscape design aspects of the concept plan. Refer to colour and material palette in Appendix 1.

**When:** HIGH

**Who:** Works and Services, Development Services, Corporate and Community Services, General Management Services

Introduce up-lighting to tower surrounds to make it a visually appealing structure at night.

**When:** LOW

**Who:** Works and Services, Corporate and Community Services

Introduce bench seating at four points around the second-level viewing platform. Seating should allow clear viewing over barrier while seated.

**When:** MEDIUM

**Who:** Works and Services, Corporate and Community Services

Formally name the lower car park near water tanks Kardarup Lookout .

**When:** HIGH

**Who:** Development Services, Works and Services, Corporate and Community Services

Prepare specifications for the 'Kardarup Lookout' Concept Plan (Figure 14).

**When:** HIGH

**Who:** Works and Services, Development Services, Corporate and Community Services, General Management Services

Implement the 'Kardarup Lookout' Concept Plan based on specifications. Engage a project manager to oversee landscape design aspects of the concept plan. Refer to colour and material palette in Appendix 1.

**When:** HIGH

**Who:** Works and Services, Development Services, Corporate and Community Services, General Management Services

Formally name the parkland within R21330 at the Lion Street intersection 'Munarch Park'

**When:** HIGH

**Who:** Development Services, Works and Services, Corporate and Community Services

Prepare specifications for the 'Munarch Park' Concept Plan (figure 15).

**When:** MEDIUM

**Who:** Works and Services, Development Services, Corporate and Community Services, General Management Services

Implement the 'Munarch Park' Concept Plan based on specifications. Engage a project manager to oversee landscape design aspects of the concept plan. Refer to colour and material palette in Appendix 1.

**When:** MEDIUM

**Who:** Works and Services, Development





Services, Corporate and Community Services, General Management Services

Undertake vegetation rehabilitation around development sites to reduce weed invasion.

**When:** ONGOING

**Who:** Works and Services

Do not undertake road maintenance work on Maxwell Street beyond the boundary of the Mount Melville reserve unless approval is given by the Albany Aboriginal Corporation to enter their reserve.

**When:** ONGOING

**Who:** Works and Services

**Table 4. Management Options for Quarry**

Options	Implications
Fence R29474 and close to the public.	Access restricted. Monitoring of fence integrity required on a regular basis.
Batter the quarry wall to an acceptable incline.	Increased and significant impact to granite outcrop and destruction of an Aboriginal Heritage Site.
Fill the quarry floor and slope off to reduce height of rock wall.	Enormous amount of fill required. Heavy machinery impact would be significant.
Do nothing.	Safety hazard remains. Council may be held to be negligent.



*Plate 9: Quarry - Mount Melville*

## 7.2 QUARRY

**Objective:** To ensure public safety and regulate use of the quarry area.

The disused granite rock quarry site within Mount Melville lies within R29474. At present the quarry is open and freely accessible to all. However, it presents a significant risk to the public in regard to rock fall and cliff collapse. Bushwalkers and mountain bikers are also at risk of stepping off or falling from high points which edge bushland above the quarry.

The quarry floor is a maze of mullock heaps and granite boulders. Natural vegetation has re-established in some areas but weeds dominate in the most part.

There has been some interest from the Albany Aboriginal Corporation in developing the site as a tourist attraction incorporating a uniquely shaped bush plant garden. The dangerous state of the site does not make this proposal feasible.

Council has four options for management of the risks associated with the quarry.

As the need for hazard reduction is urgent and further disturbance is to be avoided it is suggested that fencing is the best option at this time.

The reserve currently has a purpose of Public Recreation and Pistol Club. This purpose is inappropriate.

### Recommendations

Cyclone fence R29474 to restrict access. Fencing wire should be green in colour to blend in with the natural surrounds. Disturbance to vegetation should be minimised. Reference to Aboriginal Heritage Sites is essential.

**When:** HIGH

**Who:** Works and Services, Development Services, General Management Services.



Rehabilitate quarry floor to assist with reestablishment of native vegetation.

**When:** LOW

**Who:** Works and Services, Development Services

Monitor fence integrity on a regular basis.

**When:** ONGOING

**Who:** Works and Services

Seek to change the purpose of the quarry reserve (R29474) to bushland and landscape management.

**When:** HIGH

**Who:** Development Services

### 7.3 TRAIL RATIONALISATION AND ALIGNMENT

**Objective:** To ensure trail networks are managed to allow for continued use by walkers and cyclists.

At present the Mount Melville Circuit Trail passes outside the boundaries of the City of Albany managed Mount Melville reserve system at its southern route. Minor realignment is necessary to ensure activities supported by City of Albany do not impact on other landholders. Rationalisation and rehabilitation of tracks within the reserve requires attention.

#### Recommendations

Realign Mount Melville trails as per figure 5. Undertake a survey for threatened flora and fauna and adjust alignment to avoid disturbance.

**When:** HIGH

**Who:** Works and Services

Restore vegetation cover to closed trails as shown on figure 5.

**When:** MEDIUM

**Who:** Works and Services, Development Services

Modify access at the roadside entrances to the Mount Melville walk trail opposite Johnson Street and opposite Ashwell Street on Serpentine Road to enable

pedestrian and emergency vehicle access onto trail.

**When:** HIGH

**Who:** Works and Services, Development Services

Install bollards and gates as per figure 5.

**When:** HIGH

**Who:** Works and Services, Development Services

### 7.4 INTERPRETIVE SIGNAGE

**Objective:** To provide informative and educational signage at strategic points to enhance visitor awareness and use of reserves.

There is currently no interpretive signage within the Mount Melville reserve system. There is a strong opportunity to enhance the education and tourism value of the reserve system at the John A. Barnseby Lookout Tower. The provision of interpretive signage at the tower would be expected to enhance visitor experience and increase awareness of the reserve systems importance to Noongar culture.

#### Recommendations

Develop and install interpretive signage to enhance visitor experience on level two and three of the John A. Barnseby Lookout Tower. Suggested topics include:

- Significance of Mount Melville to Aboriginal people
  - Focus points in the landscape
- Liaise with the Albany Aboriginal Heritage Reference Group.

**When:** HIGH

**Who:** Development Services, Corporate and Community Services, Works and Services

Improve the presentation of the internal staircase by incorporating artwork that reflects an aspect or aspects of the reserve. A suggestion has been a Noongar design of the race-horse goanna (Kardar).

**When:** MEDIUM

**Who:** Corporate and Community Services, Works and Services





Install low-key interpretive signage on the big rock overlooking town. Suggested topic is:

- Aboriginal cultural links to the Albany landscape.

**When:** MEDIUM

**Who:** Development Services, Corporate and Community Services, Works and Services

Install low-key interpretive signage along the Mount Melville trail. Suggested topics include:

- bush foods
- medicinal remedies
- camping places
- significance of specific areas

**When:** MEDIUM

**Who:** Development Services, Corporate and Community Services, Works and Services

Seek out Aboriginal artists to contribute to the design of artwork and signage.

**When:** ONGOING

**Who:** Corporate and Community Services, Works and Services, Development Services

Seek to develop Mount Melville as a 'Noongar Outdoor Interpretive Centre'.

**When:** ONGOING

**Who:** General Management Services, Corporate and Community Services, Development Services, Works and Services

## 7.5 PROPOSED LAND TENURE CHANGES

**Objective:** To investigate the future of unallocated and unmanaged reserves enclaved within the Mount Melville reserve network.

Land tenure in and around Mount Melville has been in place for many years. Current cadastre does not necessarily reflect the best use of land as envisaged by early planners. Mount Melville includes three reserves managed by the City of Albany and one parcel of freehold land owned by the City of

Albany (Table 1, Figure 1). It is proposed that several small reserves that exist as unallocated and/or unmanaged reserves within the heart of the current reserve system (figure 16 and 17) be integrated as it is unlikely these reserves can have alternative uses for the current management authority, Department for Planning and Infrastructure.

**Table 5. Proposed Land Tenure Changes – Mount Melville**

Reserve Identification	Reserve Status	Proposed Tenure Changes
R6720	Unvested	Integrate into R2681
R5153	Unvested	Integrate into R2681
3 x Parcels	Unallocated	Integrate into R2681
Road Reserve	Road Reserve	Integrate into R2681
R23397	Unallocated	Integrate into R2681

### Recommendations

Seek management orders for the land parcels listed in table 5 and presented in figures 16 and 17. Liaise with the Albany Aboriginal Heritage Reference Group.

**When:** MEDIUM

**Who:** Development Services, Corporate and Community Services

## 8.0 RECOMMENDATIONS FOR MOUNT CLARENCE

Mount Clarence has developed as a place of significant importance to the Anzac tradition and the memory of fallen soldiers of the First, Second, Korean and Vietnam Wars. The summit of Mount Clarence was the place of the first Anzac Dawn Service in Australia in 1930 and the reserve hosts one of the most significant military monuments in Australia, the Desert Mounted Corps Memorial. The Memorial is located within a Commonwealth reserve but is managed by the City of Albany. It is imperative that future management of the Memorial and the areas leading to it be undertaken in a considered and dignified manner. It is expected that world wide attention will focus on the summit and surrounds of Mount Clarence in 2014, the





100th anniversary of the Battle for Gallipoli and the birth of the Anzac tradition.



Plate 10: A view from Mount Clarence

## 8.1 PUBLIC VEHICLE ACCESS, PARKING and NODE ENHANCEMENT

**Objective:** To provide adequate vehicle access and parking and to enhance developed nodes throughout the reserve system for the benefit of tourism and public enjoyment.

### 8.1.1 Apex Drive

Apex Drive extends off Forts Road and is the main vehicle access to the summit of Mount Clarence. The road was built solely with volunteer labour coordinated by the Apex Club of Albany and opened in 1955. The road passes along the Avenue of Honour and leads to 'Memorial Place' below the Desert Mounted Corps Memorial and eventually to the Memorial itself.

Two small car parks are located midway up Apex Drive. One provides a lookout viewing point and the other is used as a rally point for events such as the annual Soap Box race and Vintage Classic Hill Climb.

### Recommendations

Seek endorsement and support for all Concept Planning from the Commonwealth Department of Veterans

Affairs prior to implementation.

**When:** HIGH

**Who:** Development Services, Works and Services

Seek endorsement and support for the Desert Mounted Corps Memorial Concept Plan and Desert Mounted Corps Memorial Approach Steps Concept Plan from the Department of Planning and Infrastructure prior to implementation.

**When:** HIGH

**Who:** Development Services, Works and Services

Install uniform signage, showing name of location, at entrance point to each developed node.

- Avenue of Honour
- Apex Lookout
- Memorial Place
- Desert Mounted Corps Memorial
- Padre White Lookout

**When:** HIGH (during implementation of concept plans)

**Who:** Works and Services, Development Services

Install necessary traffic management signage and markings.

**When:** MEDIUM (after implementation of concept planning)

**Who:** Works and Services

Prepare specifications for the Avenue of Honour Concept Plan (Figures 18a and 18b).

**When:** HIGH

**Who:** Works and Services, Development Services

Implement the Avenue of Honour Concept Plan based on specifications. Engage a project manager to oversee landscape design aspects of the concept plan. Refer to colour and material palette in Appendix 1. Liaise with the RSL Albany Sub-branch.

**When:** MEDIUM

**Who:** Works and Services, Development Services, Corporate and Community Services

Install uplighting at strategic points under the Avenue of Honour trees to enhance the visual effect of the trunks





and canopies and to make the site more attractive for the Anzac Commemorative Dawn Service.

**When:** MEDIUM (during implementation of concept plan)

**Who:** Works and Services

Raise commemorative plaques approximately 1.2 metres above ground level, on a substantial post or plinth, to protect them from damage caused by sand spattering during rain. Posts or plinths should be placed in a strong formation along each tree row. Repair, repaint or replace plaques as required.

**When:** HIGH

**Who:** Works and Services

Install a power board near to the centre of the Avenue of Honour to cater for future event management opportunities.

**When:** MEDIUM (during implementation of concept plan)

**Who:** Works and Services

Formally name the car park area below the Desert Mounted Corps Memorial 'Memorial Place'.

**When:** HIGH

**Who:** Development Services, Works and Services, Corporate and Community Services, General Management Services

Prepare specifications for 'Memorial Place' Concept Plan (Figure 19a and 19b).

**When:** HIGH

**Who:** Works and Services, Development Services

Implement 'Memorial Place' Concept Plan based on specifications. Engage a project manager to oversee landscape design aspects of the concept plan. Refer to colour and material palette in Appendix 1. Liaise with the RSL Albany Sub-branch and Apex Club of Albany.

**When:** HIGH

**Who:** Works and Services, Development Services, Corporate and Community Services

Install a power board near to the base of the steps to cater for future event management opportunities.

**When:** HIGH (during implementation of

concept plan)

**Who:** Works and Services

Install uplighting to enhance base of steps and interpretive plinths.

**When:** HIGH (during implementation of concept plan)

**Who:** Works and Services

Work with the Albany Sub-Branch RSL to develop a memorial to Walers (horses) killed in the First World War.

**When:** HIGH

**Who:** General Management Services, Development Services, Works and Services.

Prepare specifications for the Desert Mounted Corps Memorial Concept Plan (Figure 20a and 20b).

**When:** HIGH

**Who:** Works and Services, Development Services

Implement the Desert Mounted Corps Memorial Concept Plan based on specifications. Engage a project manager to oversee landscape design aspects of the concept plan. Refer to colour and material palette in Appendix 1. Liaise with the RSL Albany Sub-branch.

**When:** HIGH

**Who:** Works and Services, Development Services, Corporate and Community Services

Ensure all memorial plaques on the site prior to concept plan implementation are placed in an appropriate space near the Desert Mounted Corps Memorial.

**When:** HIGH

**Who:** Works and Services, Development Services

Review lighting of the Desert Mounted Corps Memorial and enhance if necessary.

**When:** HIGH

**Who:** Works and Services

Prepare specifications for the 'Desert Mounted Corps Memorial Approach Steps' Concept Plan (Figure 23).

**When:** MEDIUM

**Who:** Works and Services, Development Services





Implement the 'Desert Mounted Corps Memorial Approach Steps' Concept Plan based on specifications. Engage a project manager to oversee landscape design aspects of the concept plan. Refer to colour and material palette in Appendix 1. Liaise with the RSL Albany Sub-branch.

**When:** MEDIUM

**Who:** Works and Services, Development Services

Install uplighting at strategic points along the Desert Mounted Corps Memorial approach steps to enhance the visual effect of surrounding vegetation and to illuminate the steps.

**When:** MEDIUM

**Who:** Works and Services

Prepare specifications for the 'Padre White Lookout' Concept Plan (Figure 21)

**When:** HIGH

**Who:** Works and Services, Development Services

Implement the 'Padre White Lookout' Concept Plan based on specifications. Engage a project manager to oversee landscape design aspects of the construction. Implementation should only occur after excision of space from 'Telecommunications' reserve number R16692 into City of Albany managed reserve R2682. Refer to colour and material palette in Appendix 1. Liaise with the RSL Albany Sub-branch.

**When:** LOW

**Who:** Works and Services, Development Services, General Management Services

Extend power to 'Padre White Lookout' for lighting and power supply.

**When:** LOW

**Who:** Works and Services

Prepare specifications for the Apex Lookout Concept Plan (Figure 22). Liaise with the Apex Club of Albany.

**When:** HIGH

**Who:** Works and Services, Development Services

Implement the Apex Lookout Concept Plan based on specifications. Engage a project manager to oversee landscape

design aspects of the concept plan. Refer to colour and material palette in Appendix 1. Liaise with the Apex Club of Albany.

**When:** HIGH

**Who:** Works and Services, Development Services

Review the nightly closure of the Desert Mounted Corps Memorial access road upon completion of all concept planning implementation. Liaise with the RSL Albany Sub-branch.

**When:** LOW

**Who:** Development Services, Works and Services

## 8.2 TRAIL RATIONALISATION AND ALIGNMENT

**Objective:** To ensure trail networks are managed to allow for continued use by walkers and cyclists.

Mount Clarence hosts a circuit trail and a link trail called the Granite Trail. Mostly the circuit trail follows the alignment of the Water Corporations pipeline to the south and west of the Mount. The remainder meanders through treed bushland and connects to fire and emergency access tracks. The Mount Clarence circuit trail leaves from and returns to 'Memorial Place'. The Granite Trail leaves from behind 'Padre White Lookout' and links to the circuit trail and Suffolk Street, which connects to Middleton Road.

The Mount Clarence trails are in relatively good condition, but are prone to water erosion. Some points will require armouring to mitigate the impact of bicycle braking down hills.

### Recommendations

Modify access at the roadside entrances to Mount Clarence at Sussex Street, McKenzie Street and Wittenoom Street to enable pedestrian and emergency access onto trail (Links to 6.3).

**When:** HIGH

**Who:** Works and Services, Development Services





Rehabilitate closed trails as per figure 6.

**When:** LOW

**Who:** Works and Services

Install bollards and gates as per figure 6.

**When:** HIGH

**Who:** Works and Services, Development Services

### 8.3 INTERPRETIVE SIGNAGE

**Objective:** To provide informative and educational signage at strategic points to enhance visitor awareness and use of reserves.

There is currently no interpretive signage within the Mount Clarence reserve system. An important opportunity exists for the exploration of emotive subjects and themes that exist in relation to the memory of fallen soldiers and the sacrifices they made to protect Australia. In addition visitors to Mount Clarence are unaware of the background and significance of the memorials, plaques and contribution of the Albany community 50 years ago to establish Apex Drive, the Avenue of Honour and the Desert Mounted Corps Memorial.

#### Recommendations

Prepare an interpretation plan that provides for the development of signage and displays along an interpretive walking route, such as may be called the 'Anzac Interpretive Walk', from 'Peace Park' on the Princess Royal Harbour foreshore through to the summit of Mount Clarence and inclusive of the Princess Royal Fortress and associated battery.

**When:** HIGH

**Who:** General Management Services, Development Services, Corporate and Community Services, Works and Services

Develop and install interpretive information onto/into spaces located within the Avenue of Honours Concept Plan, the 'Memorial Place' Concept Plan, the Desert Mounted Corps Memorial Concept Plan, 'Desert Mounted Corps

Memorial Approach Stairway Concept Plan', 'Apex Lookout' Concept Plan and the proposed lookout structure on 'Padre White Lookout' in accordance with recommendations within the Interpretive Plan for the 'Anzac Interpretive Walk' and containing the topics below.

#### Avenue of Honour

- Mrs A. Bird's poetry relating to the Avenue of Honour (Bird 1998)
- Family stories of fallen soldiers named on plaques
- Information on battles where soldiers lost their lives (Passchendaele, Gallipoli, France)

#### 'Memorial Place'

- Beginnings of the Anzac tradition
- Story of the Walers
- Desert Mounted Corps History
- Significance of Mount Clarence to the Anzac tradition

#### Desert Mounted Corps Memorial (no signage)

#### Desert Mounted Corps Memorial Stairway

- History of the placement of the Desert Mounted Corps Memorial
- Whispering wall
- Suez crises and damage to sandstone base

#### Apex Lookout

- History of the construction of the Avenue of Honour and Apex Drive

#### 'Padre White Lookout'

- Padre White and the first Anzac Dawn Service
- Departure of the fleet

Reference should be given to interpretive information presented at the Princess Royal Fortress.

**When:** HIGH (as sites are developed).

**Who:** Development Services, Corporate and Community Services, Works and Services, General Management Services





## 8.4 DEDICATED ALL TERRAIN CYCLING TRAIL

**Objective:** To provide a challenging and specially managed dedicated all-terrain cycling trail.

All terrain cycling is growing in popularity in the Mounts and throughout Albany. In particular riders are looking for a challenging trail, beyond the shared nature trails. On Mount Clarence all terrain cyclists have for some time been using a particular track that presents a diversity of challenge and is of a steepness that it is unattractive to walkers.

The designation of a dedicated all terrain cycling area does not mean that walkers will be excluded and will not result in the clearing of vegetation. The most obvious impact will be the introduction of track armouring and obstacles constructed within existing features and from natural materials to create a specially managed trail that can be used by cyclists seeking a challenging downhill run. The area in which this trail will be developed is a series of degraded quarries (figure 6).

### Recommendations

Work with cyclists, through bicycle shops and clubs, to develop the all terrain track located on Mount Clarence. Track will need armouring and marking. Expansion of this dedicated trail will not be an option.

**When:** HIGH

**Who:** Corporate and Community Services, Works and Services

Develop a 'Code of Conduct' for cyclists using the all terrain track.

**When:** HIGH

**Who:** Corporate and Community Services, Development Services, Works and Services



Plate 11: Avenue of Honour Plaque

## 8.5 ANZAC DAY COMMEMORATION SERVICE

In 1914, a large convoy of ships carrying thousands of Australian and New Zealand soldiers left King George Sound bound for Egypt, the staging place for transport to the battlefields of the Middle East and Europe. It is widely accepted that Albany was the last of mainland Australia many of these soldiers ever saw and that Albany people gathered at the summit of Mount Clarence to farewell the troops on that day.

In 1918 the RSL Albany Sub-branch coordinated the Anzac Commemoration Service in Albany having been the first chartered regional sub-branch in Western Australia in 1917. Day Services have been held in several places around Albany since that time including Federation Park (Parade Street), Lawley Park (Burgoyne Road), York Street and the Albany waterfront. Also in 1918 a special church service was held at St Johns Church in York Street by Padre Arthur Ernest White in addition to celebrated street marches by returned soldiers or their family representatives.

In 1930 Padre White, who had become the Rector of St Johns Church, organised the first official Anzac Day Dawn Service. Accompanied by a small number of returned soldiers and friends he climbed to the summit of Mount Clarence to what is now to be known as 'Padre White Lookout' and declared 'As the sun riseth and goeth down, we will remember them'. A Dawn Service



has been held at Mount Clarence every year since that time.

Both the Dawn Service and Day Service have become established traditions in Albany and their popularity and importance to returned soldiers and their families continues to grow, even as the memories fade and the old soldiers pass on. Albany RSL members offer their time voluntarily to the organization of the event and it is agreed that the contribution they have made over the years has assisted in keeping the Anzac spirit alive in Albany while also enhancing recognition of Albany's geographical and historic importance to that tradition. The Anzac tradition is now part of the character and identity of Albany, and is being given due recognition both nationally and internationally. It is the City of Albany's intention to honour that recognition as best as possible through its reserve planning process, where appropriate.

While the tradition must be continued annual controls need to be put in place to control vehicle access to Mount Clarence so that ample opportunity is given for people on foot to access all areas developed for the Anzac memory. At present vehicles numbers are escalating and safety issues are of increasing concern.

### Recommendations

Provide assistance to the RSL Albany Sub-branch for the coordination of all Anzac Day services, but particularly in relation to the Dawn Service on Mount Clarence.

**When:** HIGH

**Who:** General Management Services, Development Services, Corporate and Community Services, Works and Services

Seek funding assistance for the development of the Anzac Day Commemoration Services on an annual basis. Liaise with RSL Albany Sub-branch.

**When:** ONGOING

**Who:** General Management Services

Develop a vehicle management and access strategy for the Anzac Day Dawn Service that restricts unnecessary vehicle access to all parts of Mount Clarence and

provides for car parking and omnibus pickup opportunities at strategic points outside the Mount. Liaise with the RSL Albany Sub-branch.

**When:** HIGH

**Who:** Development Services, General Management Services

## 8.6 PROPOSED LAND TENURE CHANGES

**Objective:** To accept land tenure changes proposed by the Water Corporation under certain conditions.

The Water Corporation has two separate reserves within Mount Clarence, each connected by a pipeline easement. The Corporation has approached the City with conceptual proposals to transfer vesting of R16746 to the City of Albany for inclusion in R2682 (Mount Clarence reserve) and to expand R29075 to cater for tank development.

**Table 6. Water Corporation Reserves on Mount Clarence that may be affected by land tenure changes.**

Reserve No.	Use	Purpose
R29075 (Lots 1188,1189,1190,1191)	Reservoir & Pipeline alignment	Service Tank and Pipeline
R16746 (Lot 675)	Water Tanks	Water

### Recommendations

Accept management order of R16746 if the following conditions can be adequately satisfied:

- Water tanks are removed.
- All risks are removed from the site, including steep granite faces and potential for subsidence.
- Fencing is no longer required at the site.
- The site is extensively and successfully rehabilitated with species native to Mount Clarence.
- The site is free of species identified as declared, environmental or potential weeds in the Environmental Weed





Strategy for City of Albany Reserves (2005).

**When:** When required.

**Who:** Development Services, Council Decision

Extend the area of R29075 as proposed by the Water Corporation if the following conditions can be adequately satisfied:

- No impact occurs on amenity or health of the trees on the Avenue of Honour.
- Vegetation native to Mount Clarence is re-established to reduce the visual impact of proposed works.
- Weeds are controlled at the site.
- The visual amenity from the summit of Mount Clarence is not overtly disrupted.
- Appropriate approvals are received from the Department of Environment.

**When:** When required.

**Who:** Development Services, Council Decision

Seek the excision of the area encompassing 'Padre White Lookout' from 'Telecommunications' reserve number R16692 and integrate into City of Albany managed reserve R2682. (Figure 24).

**When:** HIGH

**Who:** Development Services, General Management Services

## 9.0 RECOMMENDATIONS FOR MOUNT ADELAIDE

The management of the Princess Royal Fortress and associated battery and bunkers and Point King lighthouse is presented in comprehensive conservation plans (Lawrance N. 2002, Bodycoat R. 1995 respectively). These plans discuss all relevant issues and requirements for these important heritage sites. The City of Albany is pursuing implementation of conservation plans as opportunities arise and as Council budget allows. The City Mounts Management Plan does not deal with these areas.

A number of Aboriginal Heritage sites exist within the Mount Adelaide reserve and are

protected under the *Aboriginal Heritage Act 1972*.



Plate 12: Aerial view of Mount Adelaide

### 9.1 PUBLIC VEHICLE ACCESS, PARKING and NODE ENHANCEMENT

**Objective:** To provide adequate vehicle access and parking and to enhance developed nodes throughout the reserve system for the benefit of tourism and public enjoyment.

#### 9.1.1 Forts Road

The main vehicle access to the summit of Mount Adelaide is via Forts Road off Marine Drive. This leads to the Princess Royal Fortress Conservation Area. A gravel surfaced open space is located at the intersection of Forts Road and Apex Drive to cater for parking during Anzac commemoration services, the Vintage Classic Hill Climb, the Albany Soap Box Club race, and special events at the Princess Royal Fortress. This space can hold 70-80 cars, randomly spaced, but is currently an eyesore and often a meeting place for people who wish to drive their cars erratically.

Further parking is available within the parade ground of Princess Royal Fortress, however this parking is largely limited to visitors to the Forts only.

The introduction of an entry statement at the intersection of Marine Drive and Forts Road would make the Mount Adelaide and Mount Clarence reserves more inviting to visitors and tourists.

#### 9.1.2 Marine Drive

Marine Drive extends around Mount Adelaide at its lower mid section. It has very important





tourism value for the City providing extensive views over King George Sound, its headlands, islands and parts of Princess Royal Harbour and the Port of Albany.

There are currently eight separate car pull-over shoulders off Marine Drive.

The asphalt car park at the Marine Drive lookout has 16 car parking bays and is a popular stopping point for locals and visitors all year round. The car park provides a path link to Ellen Cove Boardwalk pathway. This car park is in good repair and does not require any immediate attention. However, the area around it presents poorly and is in need of attention to improve its aesthetic and tourism value.

The Marine Drive lookout has been in place since 1975 and was built by the Rotary Club of Albany in conjunction with the then Western Australian Department of Tourism and Town of Albany. A plaque commemorating the opening of the lookout is in place, as is an additional memorial plaque to Kemal Ataturk, founder and President of modern Turkey. This plaque commemorates the naming of Ataturk Channel in his honour on Anzac Day 1985. The lookout provides exceptional opportunities for shore-based whale watching during the winter months.

A fixed directional compass in the centre of the lookout points to important landmarks around King George Sound. User pay binoculars are located at the front of the lookout. The binoculars are leased and managed by an independent operator.

## Recommendations

### Forts Road

Investigate the introduction of an entry statement at the corner of Marine Drive and Forts Road to make the entrance to the reserve more inviting to users and visitors. The entry statement should have a military theme and be constructed of similar materials used in site development throughout the reserve.

**When:** LOW

**Who:** Works and Services, Corporate and Community Services, Development Services

Install signage, showing name of location, at entrance point to each developed node.

- Forts Road Car Park
- 'Direction Lookout'
- Plantagenet Battery
- Ataturk Memorial

**When:** MEDIUM (During implementation of concept planning)

**Who:** Works and Services, Development Services

Install necessary traffic management signage and markings.

**When:** MEDIUM (after implementation of concept planning)

**Who:** Works and Services

Prepare specifications for the Forts Road Car Park Concept Plan (figure 25).

**When:** MEDIUM

**Who:** Works and Services, Development Services

Implement the Forts Road Car Park Concept Plan based on specifications. Refer to colour and material palette in Appendix 1.

**When:** MEDIUM

**Who:** Works and Services, Development Services, Corporate and Community Services.

### Marine Drive

Widen shoulder of Marine Drive to create a continuous kerbed and bituminised car parking shoulder. Low barriers should be erected to safeguard vehicle movement toward the edge (figure 7).

**When:** LOW

**Who:** Works and Services

Relocate rubbish bins and signage to the end of car parks to avoid interruption of scenic outlook.

**When:** HIGH

**Who:** Works and Services

Continue to slash native vegetation to car park surface height on declines to maintain views. Vegetation should not be cleared.

**When:** ONGOING

**Who:** Works and Services





Formally name the Marine Drive lookout 'Direction Lookout'.

**When:** HIGH

**Who:** Development Services, Corporate and Community Services, General Management Services

Prepare specifications for the 'Direction Lookout' Concept Plan (figure 26).

**When:** HIGH

**Who:** Works and Services, Development Services

Undertake improvements to the earth filled steps leading from 'Direction Lookout' to the Ellen Cove Boardwalk Pathway. Improvements should be undertaken in sympathy with the materials used for 'Direction Lookout' Concept Plan.

**When:** HIGH

**Who:** Works and Services, Development Services

Implement the 'Direction Lookout' Concept Plan based on specifications. Engage a project manager to oversee landscape design aspects of the concept plan. Refer to colour and material palette in Appendix 1.

**When:** MEDIUM

**Who:** Works and Services, Development Services

The Ellen Cove Boardwalk pathway, extending from Middleton Beach to the Port of Albany is a very popular sealed pathway around the base of Mount Adelaide and is utilised day and night.

Access pathways to the waters edge from the Ellen Cove Boardwalk require attention to ensure public safety up and down potentially slippery slopes.

### Recommendations

Restore vegetation cover to closed trails as shown in figure 7.

**When:** MEDIUM

**Who:** Works and Services

Install bollards and gates as per figure 7.

**When:** HIGH

**Who:** Works and Services, Development Services

Construct earth filled steps on trails leading down from Ellen Cove Boardwalk at points C, D, E & F as per figure 7.

**When:** HIGH

**Who:** Works and Services

Construct access steps at trail links on Marine Drive at points A & B as per figure 7.

**When:** HIGH

**Who:** Works and Services

## 9.2 TRAIL RATIONALISATION AND ALIGNMENT

**Objective:** To ensure trail networks are managed to allow for continued use by walkers and cyclists.

The Mount Adelaide Nature Trail was developed with funding received during Australia's Bicentennial Celebrations in 1988. Parts of the trail network were developed along fire and emergency access tracks. Others, such as those in close proximity to Princess Royal Fortress and the gun emplacements, have been in place since the early 1900's.

The Mount Adelaide trail network provides a unique opportunity for people to sustainably access the circumference and summit of the Mt Adelaide reserve system, above and below Marine Drive.

## 9.3 INTERPRETIVE SIGNAGE

**Objective:** To provide informative and educational signage at strategic points to enhance visitor awareness and use of reserves.

Interpretive signage has and is being developed for the Princess Royal Fortress to promote historical awareness of Albany's role in the first and second World Wars. This signage will not be discussed here as it forms part of the Conservation Planning for the Forts.

There are two existing interpretive sign shelters on Mount Adelaide, each providing an opportunity for fixing information





panels. One is located on the Ellen Cove Boardwalk pathway and the other is located at "Direction Lookout" on Marine Drive. The information on each sign shelter is in urgent need of review. Many of the existing panels are also damaged.

Information panels for whale watchers at the octagon lookout on the Ellen Cove Boardwalk pathway have recently been installed (2004) and are expected to have a life of approximately 10 years.

### Recommendations

Develop and install new interpretive panels for the sign shelter above the old sewage outfall pipe on the Ellen Cove Boardwalk pathway.

Topics to include:

- Plantagenet Battery
- Ataturk Memorial
- Point King Lighthouse
- Baudin Bust

**When:** HIGH

**Who:** Development Services, Corporate and Community Services, Works and Services, General Management Services

Remove the interpretive sign shelter at 'Direction Lookout'. Interpretive signage should be incorporated into the proposed lookout structure presented in the 'Direction Lookout' Concept Plan (figure 26).

**When:** MEDIUM.

**Who:** Works and Services.

### 9.4 COASTAL SAFETY SIGNAGE

The rocky coastline of Albany can be dangerous. The rocks along the shore of Mount Adelaide are popular for fishing and exploration and are often awash with wave action. Safety signage can inform coastal users of the danger and provide advice on appropriate access.

### Recommendations

Install coastal safety signs at Points C,D,E & F as shown on Figure 7.

**When:** HIGH

**Who:** Works and Services

### 9.5 PORT CONTROL TOWER

**Objective:** To identify a site for the potential development of a Port Control Tower by the Albany Port Authority.

The Port of Albany is considered one of the best natural ports in the world and an increase in vessel traffic is expected in coming years due to the development of the wood chip industry and new mining opportunities to Albany's east.

The Albany Port Authority has an interest in constructing a Port Control Tower from which to manage vessel movement in King George Sound and at the land backed Port area. This tower would require uninterrupted views of the Sound and inner Port area.

Discussions with the Port have resulted in a potential site being identified. Further work on the development of the Tower concept and definitive site selection will be the Albany Port Authority's responsibility in consultation with the City of Albany.

### Recommendations

Liaise with the Albany Port Authority in the selection of an appropriate and acceptable site for a Port Control Tower.

**When:** As necessary

**Who:** Development Services, Corporate and Community Services, Works and Services, General Management Services

Encourage the development of a viewing point at the tower for public access and appreciation of Port activities.

**When:** As necessary

**Who:** Development Services, Corporate and Community Services, Works and Services, General Management Services

Ensure a Port Control Tower does not significantly impede the view shed from Mount Adelaide in regard to the preservation of military heritage or vantage points for looking out over King George Sound and Princess Royal Harbour from Marine Drive.

**When:** As necessary

**Who:** Development Services, Corporate and Community Services, Works and Services, General Management Services





Ensure Albany Port Authority is fully aware of all issues relating to:

- Aboriginal heritage
- Conservation Plans
- Military heritage
- Recreation and tourism values
- Vegetation clearing requirements
- Maintenance of view sheds

**When:** As necessary

**Who:** Development Services, Corporate and Community Services, Works and Services, General Management Services

Seek to excise area selected for Port Control Tower and transfer vesting to the Albany Port Authority conditional that the tower surrounds are managed in sympathy with the existing natural values of Mounts Clarence and Adelaide.

**When:** As necessary

**Who:** Development Services, Corporate and Community Services, Works and Services, General Management Services

## 10.0 RECOMMENDATIONS FOR BLUFF ROCK

Bluff Rock lies directly to the north of Mount Clarence summit and to the east of Mount Melville and is a natural spur in the landscape of the City Mounts. The reserve consists of a large granite outcrop that is prominent from many parts of Albany. The summit of the outcrop provides 360 degree views of Albany.

The area encompassing the whole of Bluff Rock is a combination of several reserve types. This management plan will include all tenure identified in Figure 4.



Plate 13: View from Bluff Rock to Mount Melville

## 10.1 PUBLIC VEHICLE ACCESS, PARKING AND NODE ENHANCEMENT

**Objective:** To provide adequate vehicle access and parking and to enhance developed nodes throughout the reserve system for the benefit of tourism and public enjoyment.

Bluff Rock is accessed via Collingwood Road, Beresford Road, Bathurst Street and Tassell Street. A small car park for three vehicles exists at the corner of Collingwood Road and Beresford Street within the road reserve.

### Recommendations

Undertake earthworks and ground preparation as per figure 8 to create a grassed parkland under trees at the northern extent of Bluff Rock. Grass should extend to the base of the rock. Some selective clearing of trees may be required but it is expected to be minimal. Grass to be delineated from bushland by a flush kerb for easy maintenance.

**When:** LOW

**Who:** Works and Services

Introduce picnic platforms located as per figure 8.

**When:** LOW

**Who:** Works and Services

Install sign, showing name of location, at car park.

- Bluff Rock - Barmup

PLACE OF TREES

**When:** MEDIUM

**Who:** Works and Services, Development Services

Install necessary traffic management signage and markings.

**When:** MEDIUM

**Who:** Works and Services

## 10.2 TRAIL RATIONALISATION AND ALIGNMENT

**Objective:** To ensure trail networks are managed to allow for continued use by walkers and cyclists.





Bluff Rock is a very attractive area, with trees dominating the bushland against a granite rock backdrop. Weeds have encroached into the reserve system along firebreaks and roads. Unmanaged use and difficulties with tenure has resulted in Bluff Rock bushland being intersected with a number of firebreaks. Some sections of firebreak are used as a trail to circuit the reserve system.

### Recommendations

Restore vegetation cover to closed trails as shown on figure 8.

**When:** MEDIUM

**Who:** Works and Services

Construct a shared pathway link from the trail head at the car park through the grassed parkland to connect with Tassell Street pathway as per figure 8.

**When:** LOW

**Who:** Works and Services

### 10.3 ROCK GRAFFITI

**Objective:** To minimise the opportunity for graffiti on Bluff Rock.

It has become somewhat popular for vandals to graffiti on the face of Bluff Rock. In the last year it has become more prevalent and the rock is now defaced by vivid white writing in several places. This graffiti has a detrimental affect on the rocks appearance as an obvious focal point of the town and reflects badly on the community. Removal of the paint is difficult and impacts on the rocks natural features.

It is an offence under Part 4 Division 1 Section 4.2 (1) of the City of Albany Local Government Property Local Law 2001 to damage local government property, built or natural. Offenders will be pursued under the enforcements allowable in this Act, and also under State law dealing with the damage of public property.

### Recommendations

Actively pursue vandals causing damage to Bluff Rock through graffiti or other means. Encourage surrounding residents to report any suspicious behaviour.

**When:** ONGOING

**Who:** Development Services

Undertake reparation work on Bluff Rock to remove or conceal graffiti.

**When:** HIGH

**Who:** Works and Services

Seal the face of the rock with a paint resistant sealant.

**When:** HIGH

**Who:** Works and Services

### 10.4 PROPOSED LAND TENURE CHANGES

**Objective:** To create a cohesive reserve system at Bluff Rock.

Figure 4 shows the complicated tenure of Bluff Rock. Road reserves are a City of Albany responsibility and freehold land held by City of Albany will be considered as a reserve because it is zoned 'parks and recreation' in the City of Albany Town Planning Scheme 1A (City of Albany 1983).

### Recommendations

Seek to have portions of road reserves passing through the centre of the Bluff Rock reserve system and along Tassel Street integrated into R37685 and R24409.

**When:** MEDIUM

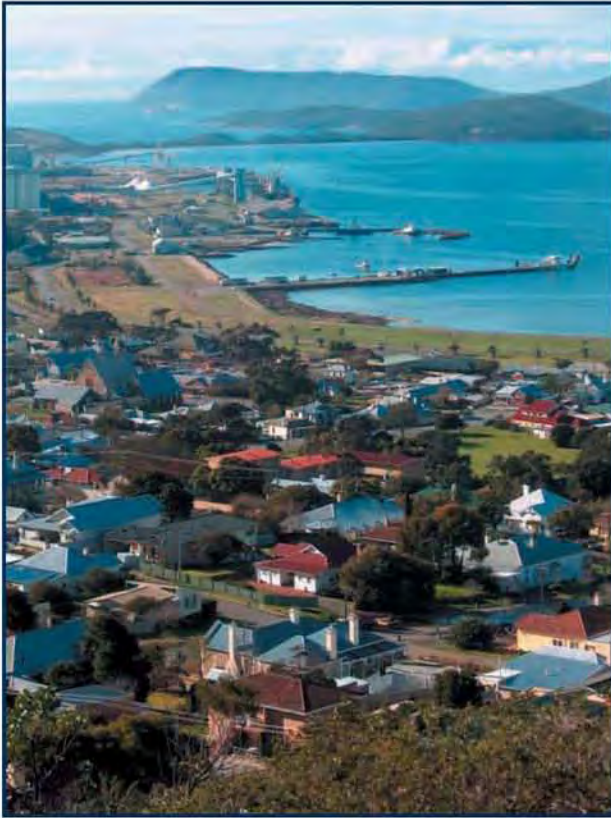
**Who:** Development Services



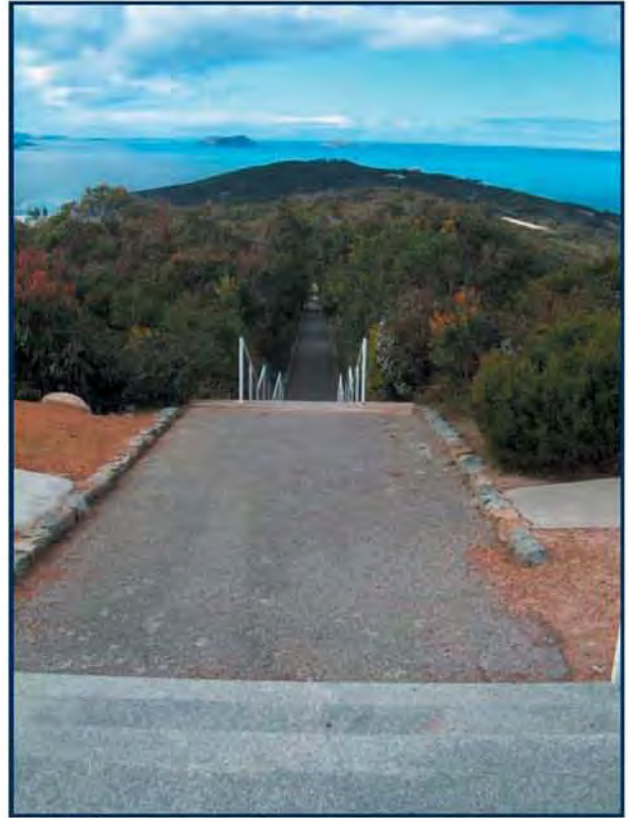
Plate 14: View from Bluff Rock to Mount Clarence



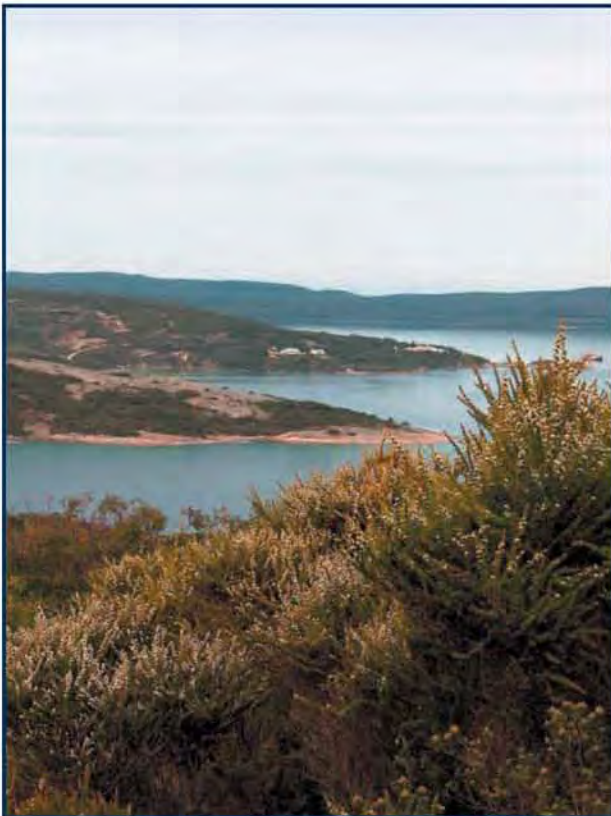




*Plate 15: A view from Mt Melville Nature Trail*



*Plate 16: From Mt Clarence looking East.*



*Plate 17: From Mt Adelaide to Quaranup*



*Plate 16: Princess Royal Fortress*





# **APPENDIX 1.**

Recommended Colour and Material Palette

For Concept Planning Implementation





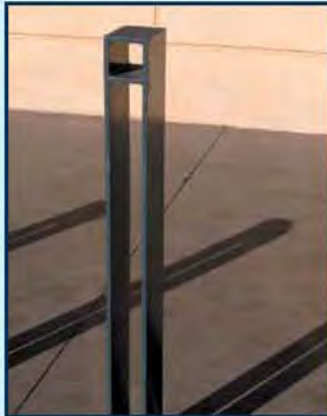
## RECOMMENDED FURNITURE



### RUBBISH BIN

This bin design, or one of a similar quality, could be introduced to developed nodes such as 'Memorial Place' and John A. Barnesby Lookout.

Colour: Dark Grey

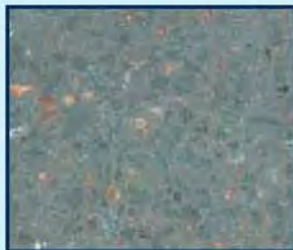
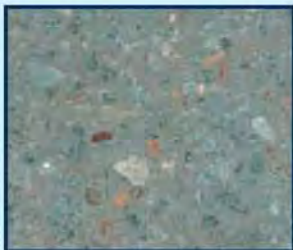


### METAL BOLLARD

This bollard, or one of similar quality, could be introduced to developed nodes such as 'Direction Lookout' and John A. Barnesby Lookout.

Colour: Dark Grey

## RECOMMENDED PAVERS



### URBAN STONE 400x400 PAVER

The same pavers should be used at all sites requiring pavement.

Colour: Casino and Gunmetal

## RECOMMENDED MATERIALS AND TREATMENTS



### WOOD MULCH

Mulch from locally found native trees can be used as bedding under trees and shrubs. Mulch which may introduce weeds should be avoided.



### COMPACTED GRAVEL

To be introduced to unsealed car parks and pathways to provide a smooth surface. Gravel should be well compacted and edged with flush kerbing.





## RECOMMENDED MATERIALS AND TREATMENTS cont.



### JARRAH

All timber structures should be built with Jarrah or timber of similar strength and longevity. CCA pine should be avoided.



### GRANITE

To be used in all retaining walls and garden or play features.



### ALBANY GRANITE

Albany Granite to be specially sourced for Desert Mounted Corps Memorial bollards and other necessary structures. (Refer Albany Monument Works)



### RED ASPHALT OR BITUMEN

All sealed car parks at developed nodes to be paved in red asphalt or bitumen to create a sense of arrival at an important destination.



### STEEL BALLUSTRADING

To be used on lookouts. Railing to be flat bar or round bar to ensure views are not impeded too greatly while strength is assured. Steel can be galvanised, colour powder coated or left to oxidise.

## ARTWORK



### ARTWORK

Artwork presented here is suggested only and kindly offered by the artist as examples only.

Art to become an integral part of the attractiveness of developed nodes at sites indicated in concept plans.





## REFERENCES

- Aboriginal Lands Trust (2003) *Land Assessment Report – Reserve 26203 – Albany* in liaison with Department of Indigenous Affairs Albany Western Australia
- ATA Environmental (2002) *Draft City of Albany Greenways Plan* Report No: 2000/115 City of Albany Western Australia
- Bird D (1998) *Apex Drive, Avenue of Honour, Desert Mounted Corps Memorial – a memorial tribute* Albany Western Australia
- Bodycoat R (1995) *Point King Lighthouse Albany WA – Conservation Plan* Town of Albany Western Australia
- Brad Goode and Associates (2005) *“Kinjarling” The Place of Rain - The City of Albany & Department of Indigenous Affairs Aboriginal Heritage Survey* Albany Western Australia
- Braun K (2002) *City of Albany Fire Prevention Plan* City of Albany Western Australia
- City of Albany (1983) *Town of Albany Town Planning Scheme/Shire of Albany Town Planning Scheme* Albany Western Australia
- City of Albany (2003) *City of Albany Aboriginal Accord Action Plan* Albany Western Australia prepared by the City of Albany Aboriginal Accord Committee Albany Western Australia
- City of Albany (2004) *Public Forum Analysis – City Mounts – Mt Melville, Mt Clarence, Mt Adelaide, Mt Martin and Bluff Rock – May 12 2004* Prepared by City of Albany Parks and Reserves Planner Albany Western Australia
- City of Albany (2005) *Environmental Weed Strategy for City of Albany Reserves* Prepared by City of Albany Bushcare Coordinator Albany Western Australian
- City of Albany (2005) *Reserve Planning Framework* prepared by City of Albany Parks and Reserves Planner Albany Western Australia
- Department of Conservation and Land Management (2003) *Draft South Coast Macro-Corridor Report* Unpublished Report Albany Western Australia
- Friends of Mount Adelaide and Mount Clarence Reserves (2002) *Watenuup – Mount Adelaide and Condenuup – Mount Clarence Reserves Draft Management Plan* Green Skills and City of Albany Western Australia
- Friends of Mount Adelaide and Mount Clarence Reserves (2002) *Draft Mount Adelaide and Mount Clarence Flora and Fauna Conservation Plan* Albany Western Australia
- Green Skills (2001) *Submission to the City of Albany on the Development of a Multiple Use Trail in the Mount Melville Reserve* Albany Western Australia
- Heritage TODAY (2000) *Municipal Heritage Inventory for the City of Albany* Albany Western Australia
- Howard RM, Sandiford E (1991) *Natural Estate Study – Mt Melville, Mt Clarence, Mt Adelaide Albany – Interim Report, Proposed Management Plan* Albany Western Australia
- Lawrance N (2002) *Princess Royal Fortress, Albany* City of Albany Western Australia
- Maher Brampton Associates (1999) *Albany Trails Master Plan* City of Albany Western Australia
- Nayton G (1998) *Archaeological Investigation of Point King Lighthouse - Preliminary Assessment of the Impact of Recent Site Works on the Archaeological Heritage Values of Point King Lighthouse* Town of Albany Western Australia

