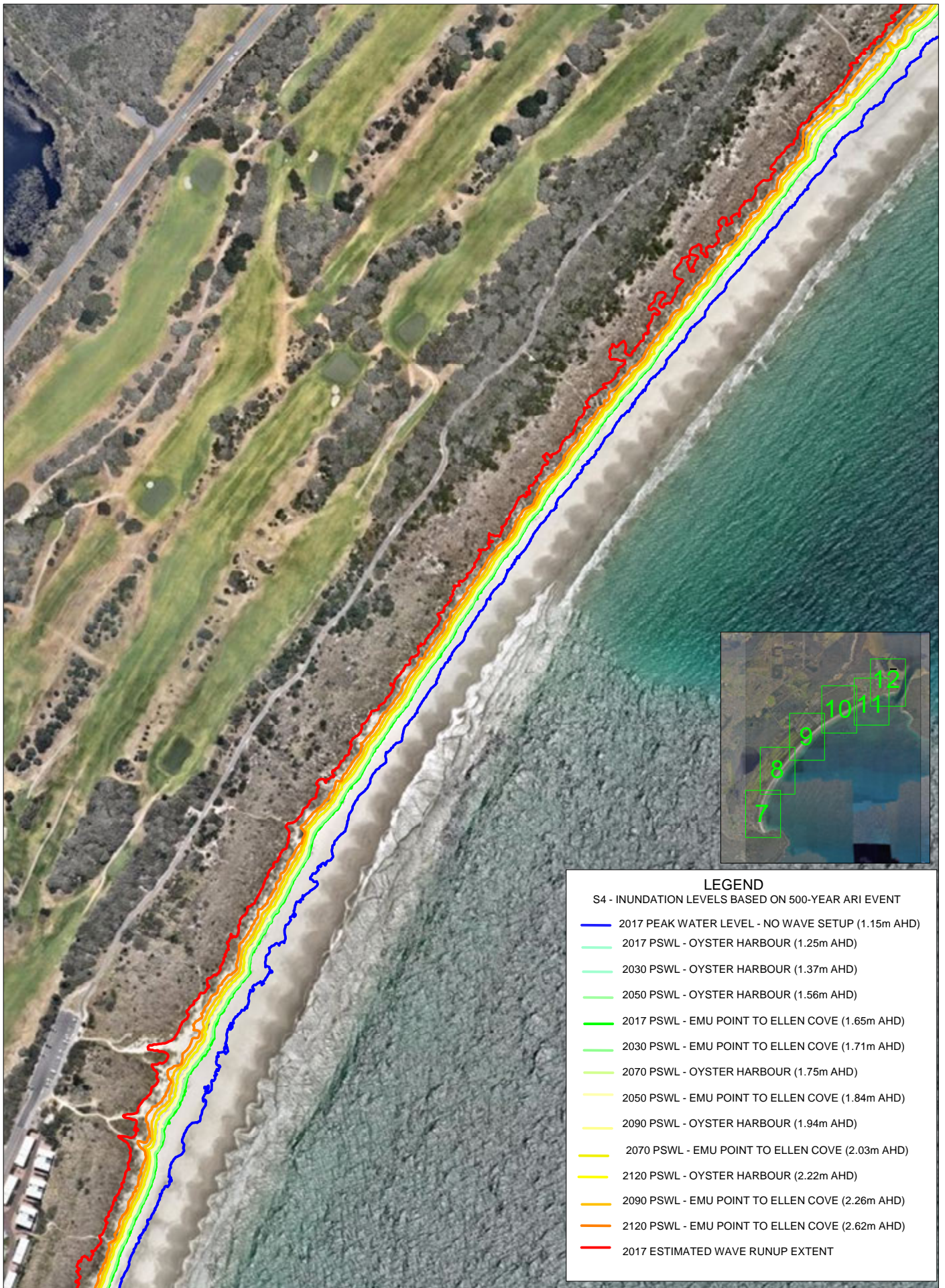




LEGEND

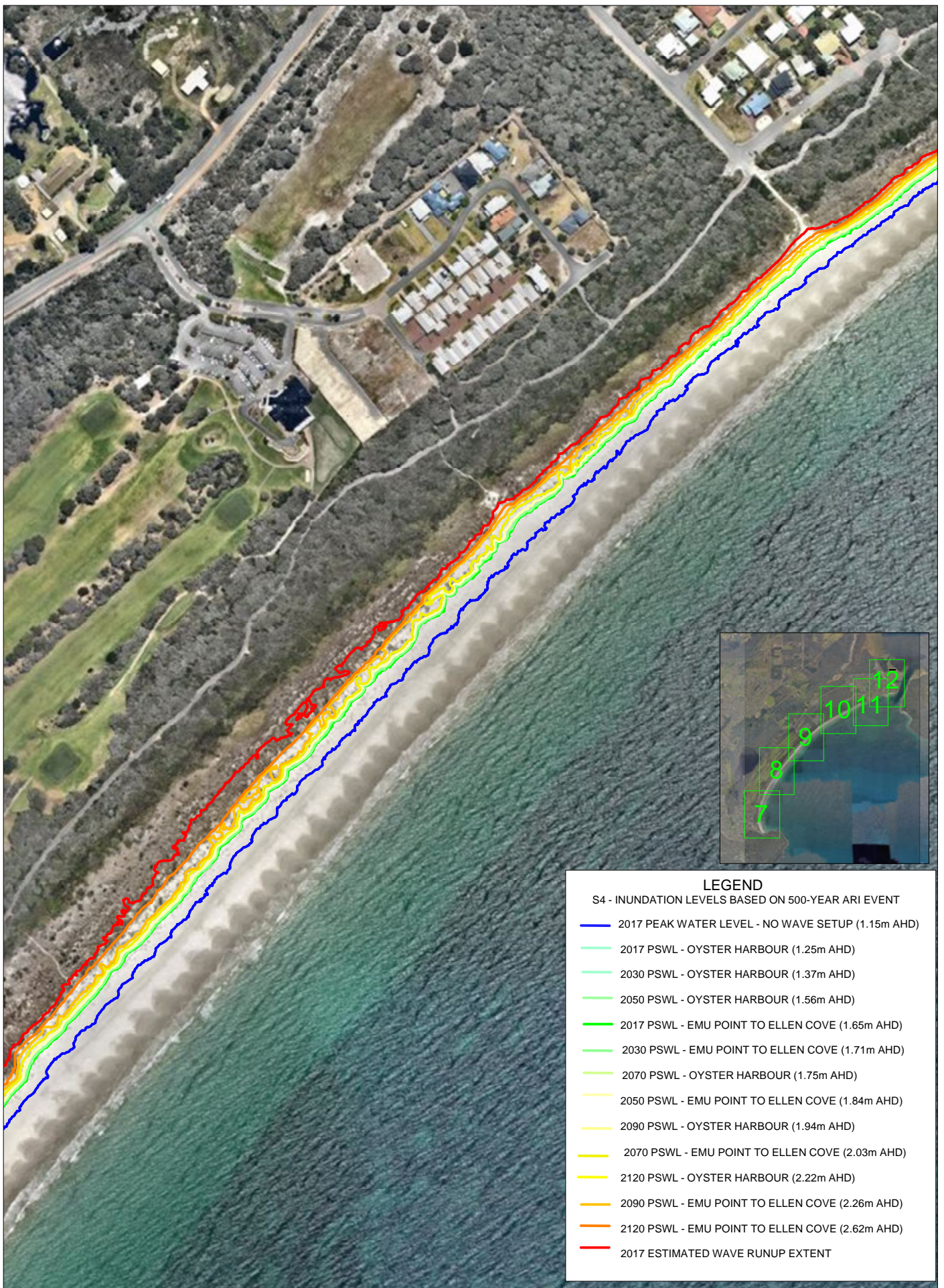
S4 - INUNDATION LEVELS BASED ON 500-YEAR ARI EVENT

- 2017 PEAK WATER LEVEL - NO WAVE SETUP (1.15m AHD)
- 2017 PSWL - OYSTER HARBOUR (1.25m AHD)
- 2030 PSWL - OYSTER HARBOUR (1.37m AHD)
- 2050 PSWL - OYSTER HARBOUR (1.56m AHD)
- 2017 PSWL - EMU POINT TO ELLEN COVE (1.65m AHD)
- 2030 PSWL - EMU POINT TO ELLEN COVE (1.71m AHD)
- 2070 PSWL - OYSTER HARBOUR (1.75m AHD)
- 2050 PSWL - EMU POINT TO ELLEN COVE (1.84m AHD)
- 2090 PSWL - OYSTER HARBOUR (1.94m AHD)
- 2070 PSWL - EMU POINT TO ELLEN COVE (2.03m AHD)
- 2120 PSWL - OYSTER HARBOUR (2.22m AHD)
- 2090 PSWL - EMU POINT TO ELLEN COVE (2.26m AHD)
- 2120 PSWL - EMU POINT TO ELLEN COVE (2.62m AHD)
- 2017 ESTIMATED WAVE RUNUP EXTENT



LEGEND
 S4 - INUNDATION LEVELS BASED ON 500-YEAR ARI EVENT

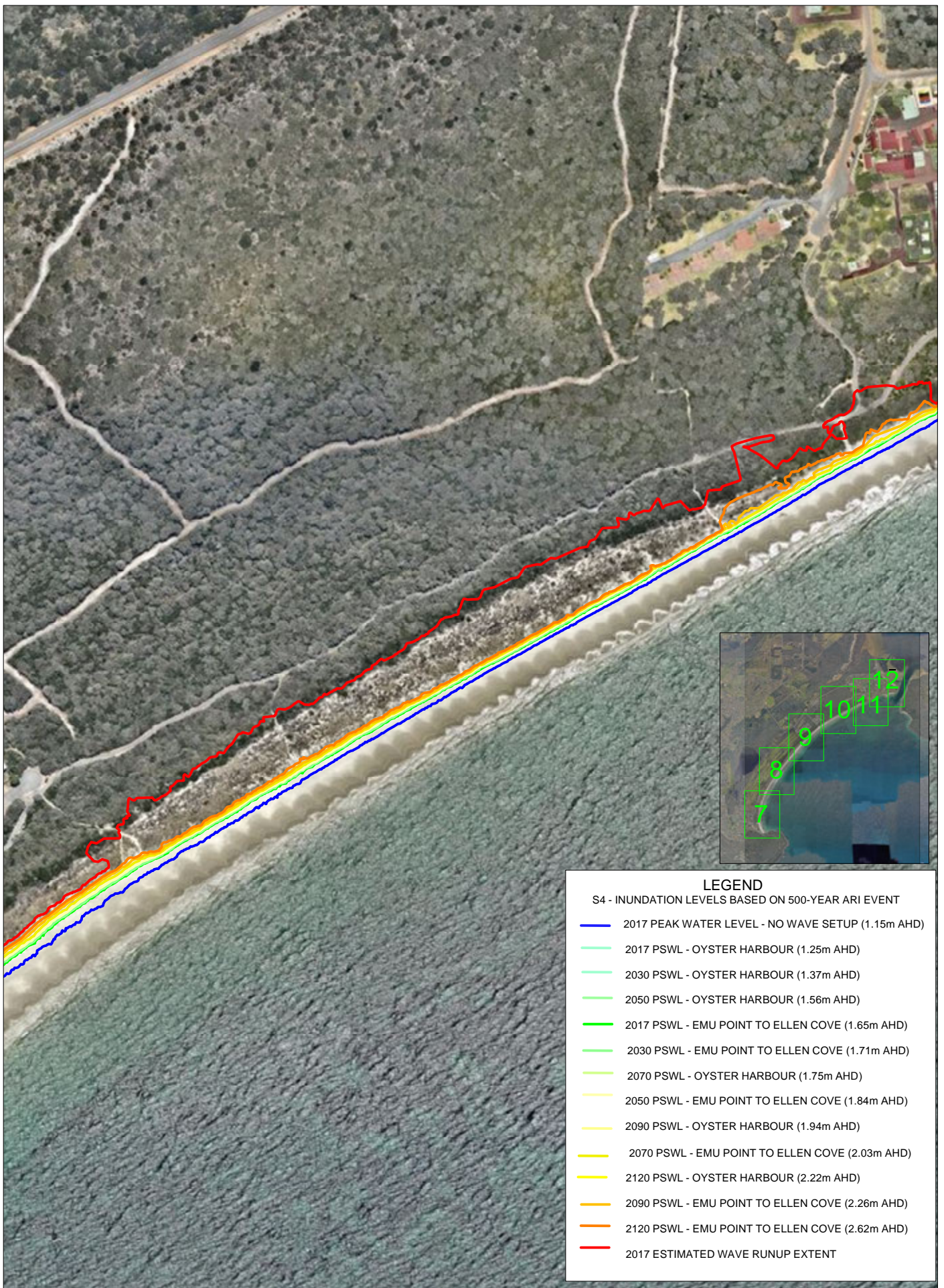
- 2017 PEAK WATER LEVEL - NO WAVE SETUP (1.15m AHD)
- 2017 PSWL - OYSTER HARBOUR (1.25m AHD)
- 2030 PSWL - OYSTER HARBOUR (1.37m AHD)
- 2050 PSWL - OYSTER HARBOUR (1.56m AHD)
- 2017 PSWL - EMU POINT TO ELLEN COVE (1.65m AHD)
- 2030 PSWL - EMU POINT TO ELLEN COVE (1.71m AHD)
- 2070 PSWL - OYSTER HARBOUR (1.75m AHD)
- 2050 PSWL - EMU POINT TO ELLEN COVE (1.84m AHD)
- 2090 PSWL - OYSTER HARBOUR (1.94m AHD)
- 2070 PSWL - EMU POINT TO ELLEN COVE (2.03m AHD)
- 2120 PSWL - OYSTER HARBOUR (2.22m AHD)
- 2090 PSWL - EMU POINT TO ELLEN COVE (2.26m AHD)
- 2120 PSWL - EMU POINT TO ELLEN COVE (2.62m AHD)
- 2017 ESTIMATED WAVE RUNUP EXTENT



LEGEND

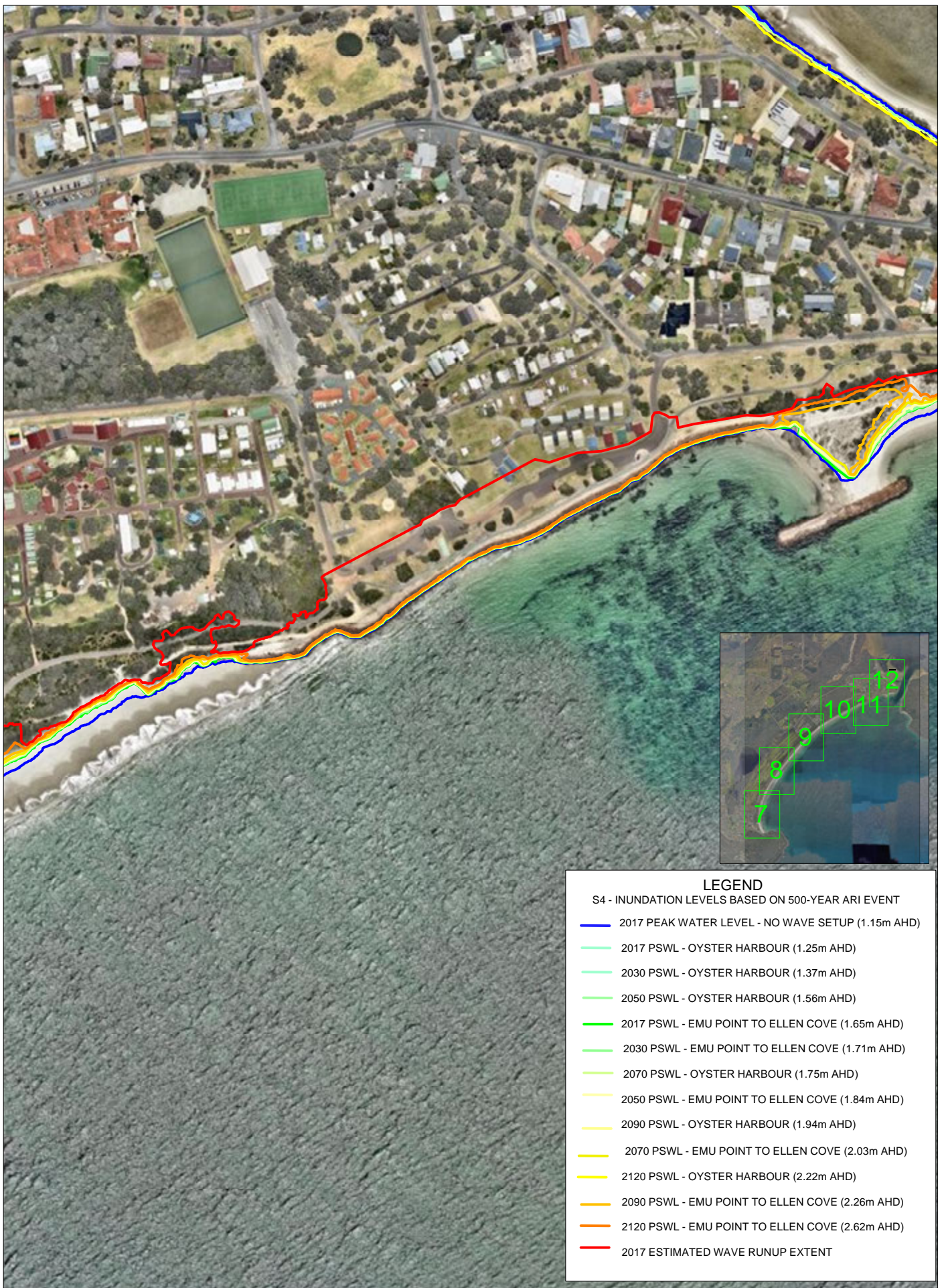
S4 - INUNDATION LEVELS BASED ON 500-YEAR ARI EVENT

- 2017 PEAK WATER LEVEL - NO WAVE SETUP (1.15m AHD)
- 2017 PSWL - OYSTER HARBOUR (1.25m AHD)
- 2030 PSWL - OYSTER HARBOUR (1.37m AHD)
- 2050 PSWL - OYSTER HARBOUR (1.56m AHD)
- 2017 PSWL - EMU POINT TO ELLEN COVE (1.65m AHD)
- 2030 PSWL - EMU POINT TO ELLEN COVE (1.71m AHD)
- 2070 PSWL - OYSTER HARBOUR (1.75m AHD)
- 2050 PSWL - EMU POINT TO ELLEN COVE (1.84m AHD)
- 2090 PSWL - OYSTER HARBOUR (1.94m AHD)
- 2070 PSWL - EMU POINT TO ELLEN COVE (2.03m AHD)
- 2120 PSWL - OYSTER HARBOUR (2.22m AHD)
- 2090 PSWL - EMU POINT TO ELLEN COVE (2.26m AHD)
- 2120 PSWL - EMU POINT TO ELLEN COVE (2.62m AHD)
- 2017 ESTIMATED WAVE RUNUP EXTENT



LEGEND
 S4 - INUNDATION LEVELS BASED ON 500-YEAR ARI EVENT

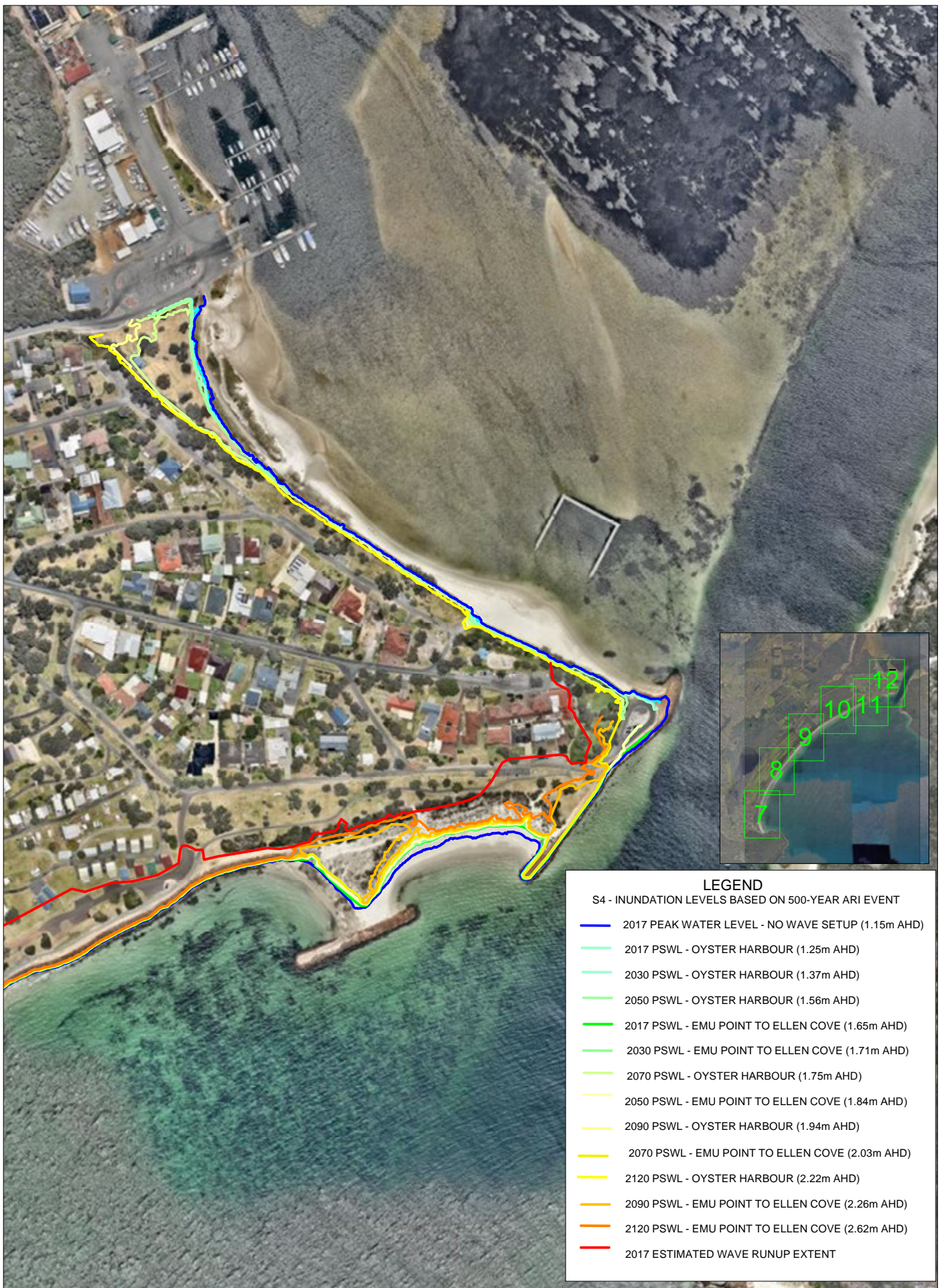
	2017 PEAK WATER LEVEL - NO WAVE SETUP (1.15m AHD)
	2017 PSWL - OYSTER HARBOUR (1.25m AHD)
	2030 PSWL - OYSTER HARBOUR (1.37m AHD)
	2050 PSWL - OYSTER HARBOUR (1.56m AHD)
	2017 PSWL - EMU POINT TO ELLEN COVE (1.65m AHD)
	2030 PSWL - EMU POINT TO ELLEN COVE (1.71m AHD)
	2070 PSWL - OYSTER HARBOUR (1.75m AHD)
	2050 PSWL - EMU POINT TO ELLEN COVE (1.84m AHD)
	2090 PSWL - OYSTER HARBOUR (1.94m AHD)
	2070 PSWL - EMU POINT TO ELLEN COVE (2.03m AHD)
	2120 PSWL - OYSTER HARBOUR (2.22m AHD)
	2090 PSWL - EMU POINT TO ELLEN COVE (2.26m AHD)
	2120 PSWL - EMU POINT TO ELLEN COVE (2.62m AHD)
	2017 ESTIMATED WAVE RUNUP EXTENT



LEGEND

S4 - INUNDATION LEVELS BASED ON 500-YEAR ARI EVENT

	2017 PEAK WATER LEVEL - NO WAVE SETUP (1.15m AHD)
	2017 PSWL - OYSTER HARBOUR (1.25m AHD)
	2030 PSWL - OYSTER HARBOUR (1.37m AHD)
	2050 PSWL - OYSTER HARBOUR (1.56m AHD)
	2017 PSWL - EMU POINT TO ELLEN COVE (1.65m AHD)
	2030 PSWL - EMU POINT TO ELLEN COVE (1.71m AHD)
	2070 PSWL - OYSTER HARBOUR (1.75m AHD)
	2050 PSWL - EMU POINT TO ELLEN COVE (1.84m AHD)
	2090 PSWL - OYSTER HARBOUR (1.94m AHD)
	2070 PSWL - EMU POINT TO ELLEN COVE (2.03m AHD)
	2120 PSWL - OYSTER HARBOUR (2.22m AHD)
	2090 PSWL - EMU POINT TO ELLEN COVE (2.26m AHD)
	2120 PSWL - EMU POINT TO ELLEN COVE (2.62m AHD)
	2017 ESTIMATED WAVE RUNUP EXTENT



LEGEND

S4 - INUNDATION LEVELS BASED ON 500-YEAR ARI EVENT

- 2017 PEAK WATER LEVEL - NO WAVE SETUP (1.15m AHD)
- 2017 PSWL - OYSTER HARBOUR (1.25m AHD)
- 2030 PSWL - OYSTER HARBOUR (1.37m AHD)
- 2050 PSWL - OYSTER HARBOUR (1.56m AHD)
- 2017 PSWL - EMU POINT TO ELLEN COVE (1.65m AHD)
- 2030 PSWL - EMU POINT TO ELLEN COVE (1.71m AHD)
- 2070 PSWL - OYSTER HARBOUR (1.75m AHD)
- 2050 PSWL - EMU POINT TO ELLEN COVE (1.84m AHD)
- 2090 PSWL - OYSTER HARBOUR (1.94m AHD)
- 2070 PSWL - EMU POINT TO ELLEN COVE (2.03m AHD)
- 2120 PSWL - OYSTER HARBOUR (2.22m AHD)
- 2090 PSWL - EMU POINT TO ELLEN COVE (2.26m AHD)
- 2120 PSWL - EMU POINT TO ELLEN COVE (2.62m AHD)
- 2017 ESTIMATED WAVE RUNUP EXTENT