



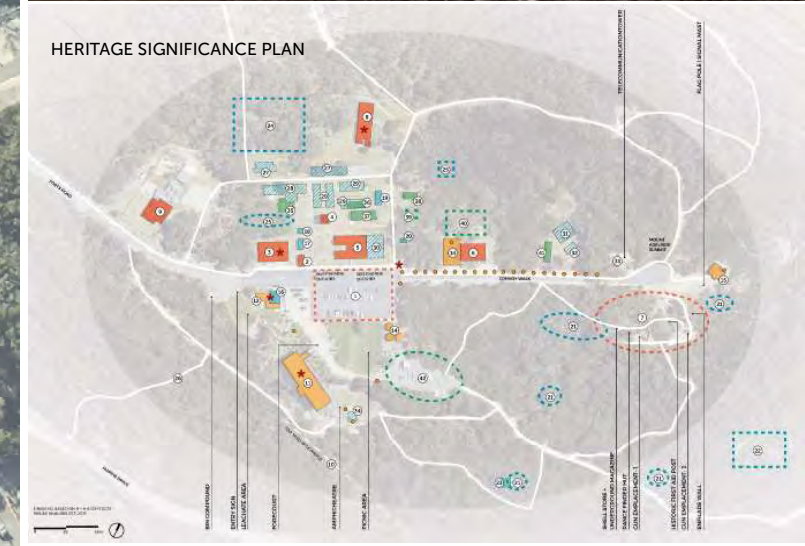
CONCEPT PLAN
Graphic produced in collaboration with by Propagule



PRINCESS ROYAL FORTRESS EXISTING CONDITION c.2019



PRINCESS ROYAL FORTRESS c.1942



LEGEND

- 01 NATIONAL ANZAC CENTRE
 - 02 SUBMARINERS MEMORIAL AMPHITHEATRE +
 - 03 OUTDOOR EDUCATIONAL SPACE
 - 04 NATURE PLAYGROUND
 - 05 CONVOY WALK
 - 06 CARPARK UPGRADE
- 0 10 20 40m

PRINCESS ROYAL FORTRESS

A PLAN TO CONSERVE + ENHANCE + CREATE AN ENDURING LEGACY

DRAFT
CONCEPT PLAN ONLY, SUBJECT TO DETAIL DESIGN



CARPARK + TRAFFIC CIRCULATION

Reconfiguration of vehicle access, drop off and parking to provide better accessibility to Princess Royal Fortress and National Anzac Centre. Enhance the historical setting with restricted parking (buses and disabled) on the Parade Ground and interpreting the original configuration of the historical parade ground.



VISITOR AMENITIES

Build upon recent infrastructure upgrades to support site activation and improve visitor experiences. Additional facilities would include shelters, picnic facilities, toilets, footpath connections, lighting, seating, drink fountains and bike racks. Provide a central way-finding and orientation point at the entry to Princess Royal Fortress that could be accentuated with artwork.

Precedent image: Craven Street Trailhead, by Wilson Architect, Asheville, North Carolina



SUBMARINERS MEMORIAL AMPHITHEATRE

In 1942, with the rapid advance of the Japanese forces, Albany and Fremantle were chosen as major US submarine bases for the protection and maintenance of the US submarines throughout WWII. A memorial dedicated to all those who lost their lives in submarine warfare is based adjacent to the National Anzac Centre with a memorial service held here each year. Currently the space has poor accessibility and a poor outlook. There is potential for an enhanced setting, infrastructure services and landscape.



ADAPTIVE REUSE OF BUILDINGS

Adaptive reuse of the Forts buildings to optimise use and participation. For example indoor designated educational spaces, cafe opportunities. Strategically plan for future expansion of improved visitor amenities and removal of non-significant buildings



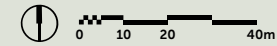
CONCEPT PLAN
Graphic produced in collaboration with by Propagule



PRINCESS ROYAL FORTRESS c.1942

LEGEND

- | | |
|---|--|
| 01 NATIONAL ANZAC CENTRE | 08 BARRACKS BUILDING - POTENTIAL BUILDING EXTENSION OPTION - LOCATED OVER AND INCORPORATED WITH HISTORIC BUILDING FOOTINGS |
| 02 GARRISON RESTAURANT | 09 CARLYLES FUNCTION CENTRE - POTENTIAL TO REFURBISH HERITAGE BUILDING TO INCLUDE A COFFEE OUTLET |
| 03 GATHERING + PICNIC AREA | 10 NEW BUILDING LOCATED OVER AND INCORPORATED WITH HISTORIC BUILDING FOOTINGS |
| 04 CAR PARK + PARADE GROUND | 11 MARRIED QUARTERS - POTENTIAL TO REFURBISH HERITAGE BUILDING AS A COFFEE OUTLET |
| 05 TOILETS | |
| 06 GUARD HOUSE | |
| 07 FORTS STORE- POTENTIAL TO REFURBISH HERITAGE BUILDING AS A COFFEE OUTLET | |



PRINCESS ROYAL FORTRESS: BUILDING EXTENSION OR REFURBISHMENT

A PLAN TO CONSERVE + ENHANCE + CREATE AN ENDURING LEGACY

DRAFT

CONCEPT PLAN ONLY, SUBJECT TO DETAIL DESIGN



FORTS STORE BUILDING REFURBISHMENT

BENEFITS + OPPORTUNITIES

- Multi purpose facility for administration, education and research, public amenities such as toilets and coffee operation
- Central location

CONSIDERATIONS

- Heritage implications
- Relocation of existing gift shop



CARLYLES FUNCTION CENTRE BUILDING REFURBISHMENT

BENEFITS + OPPORTUNITIES

- Multi purpose facility - cafe and function centre

CONSIDERATIONS

- Location is not central and easily accessible as a cafe and quick takeaway coffee option



BUILDING EXTENSION

BENEFITS + OPPORTUNITIES

- Multi purpose facility for administration, education and research, public amenities such as toilets and coffee operation
- Opportunity to incorporate and interpret the original heritage building footings

CONSIDERATIONS

- Heritage implications





OVERVIEW

The National Anzac Centre is a self-financed facility with revenue from entry fees financing the operations and maintenance budgets of the Centre, as well as the other adjacent attractions within Princess Royal Fortress.

Construction of the National Anzac Centre was financed by the State and Federal Government in 2014, but is owned and run by the City of Albany. The National Anzac Centre is considered a national asset with features that rival our sister museums across the country.

In 2019 the National Anzac Centre marked 5 years of successful operation. With over 346,000 tickets sold plus more visitors to the heritage precinct to date.



NATIONAL ANZAC CENTRE

A PLAN TO CONSERVE + ENHANCE + CREATE AN ENDURING LEGACY

DRAFT
CONCEPT PLAN ONLY, SUBJECT TO DETAIL DESIGN



NATIONAL ANZAC CENTRE REFRESH

Continue to provide and build engaging visitor experience by taking a strategic and dynamic approach to museum collection and display material, in order to repeat visitation and maintain contemporary relevance of the museum. Renew, refresh and improve the National Anzac Centre to ensure interpretive experiences remain relevant, engaging and consistently high quality.



Phase One

- Loan renewals
- Viewing hall upgrades – blinds, painting and new wall interpretive panels and show case display
- Convoy table rebuild and relocation to the Viewing Hall
- Conversion of the Convoy Room into a theatrette/temporary exhibition gallery - creating a dual-purpose screening room (for content with audio-track) and a larger exhibition space.



- New inoperative panels installed
- Curation of new content
- Curation of temporary exhibitions

Phase Two

- Audio commentary and enhanced iPad experience in the Viewing Hall
- All abilities accessibility to the Reflection Pool in the Remembrance Gallery



PARTNERSHIPS

Develop and implement cross-promotional strategies in partnership with the WA Museum to manage NAC cultural and commemorative assets.

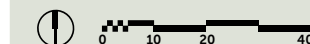


CONCEPT PLAN
Graphic produced in collaboration with by Propagule



LEGEND

- 01 NATIONAL ANZAC CENTRE
- 02 SUBMARINERS MEMORIAL AMPHITHEATRE
- 03 ELEVATED HERITAGE WALKWAY
- 04 GUN EMPLACEMENT
- 05 CONVOY LOOKOUT
- 06 CONVOY WALK
- 07 NATURE PLAYGROUND + MARITIME GUNS



IRRERUP HERITAGE DISCOVERY WALK

A PLAN TO CONSERVE + ENHANCE + CREATE AN ENDURING LEGACY

DRAFT
CONCEPT PLAN ONLY, SUBJECT TO DETAIL DESIGN



GUN EMPLACEMENTS

Facility upgrades, balustrade and formalised pathways improve the safety, enjoyment and interpretation of these 'hidden treasures' of the Forts guns and tunnel complex. Accessible via the Convoy Walkway and elevated heritage walkway.



HERITAGE DISCOVERY WALK

An iconic all accessible heritage walkway to the summit of Mt Adelaide (Irrerup), linking historic assets and attractions within the Princess Royal Fortress precinct, offering stunning views and vistas, a bushland experience. The walkway will create an easy and accessible visitor loop, which could be tour guided, connecting major points of interest; National Anzac Centre forecourt and lawn area, submariners amphitheater, naval guns display, through native bushland to the underground magazine store and gun emplacements, then up to the summit flagstaff and lookout, travelling back down convoy walk past Forts galleries and exhibitions to the parade ground.



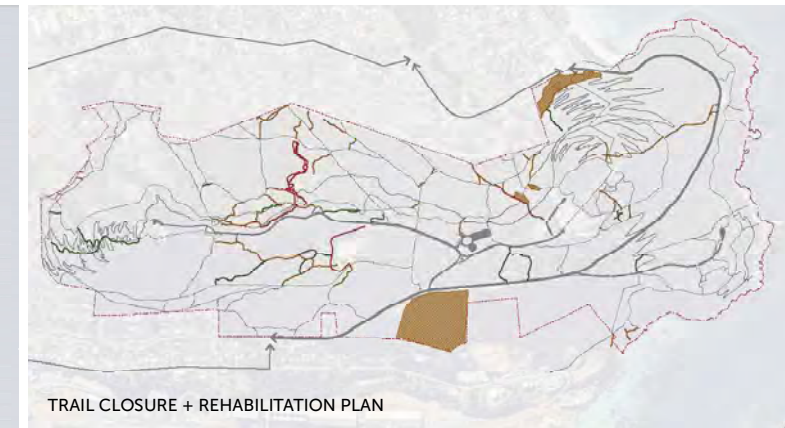
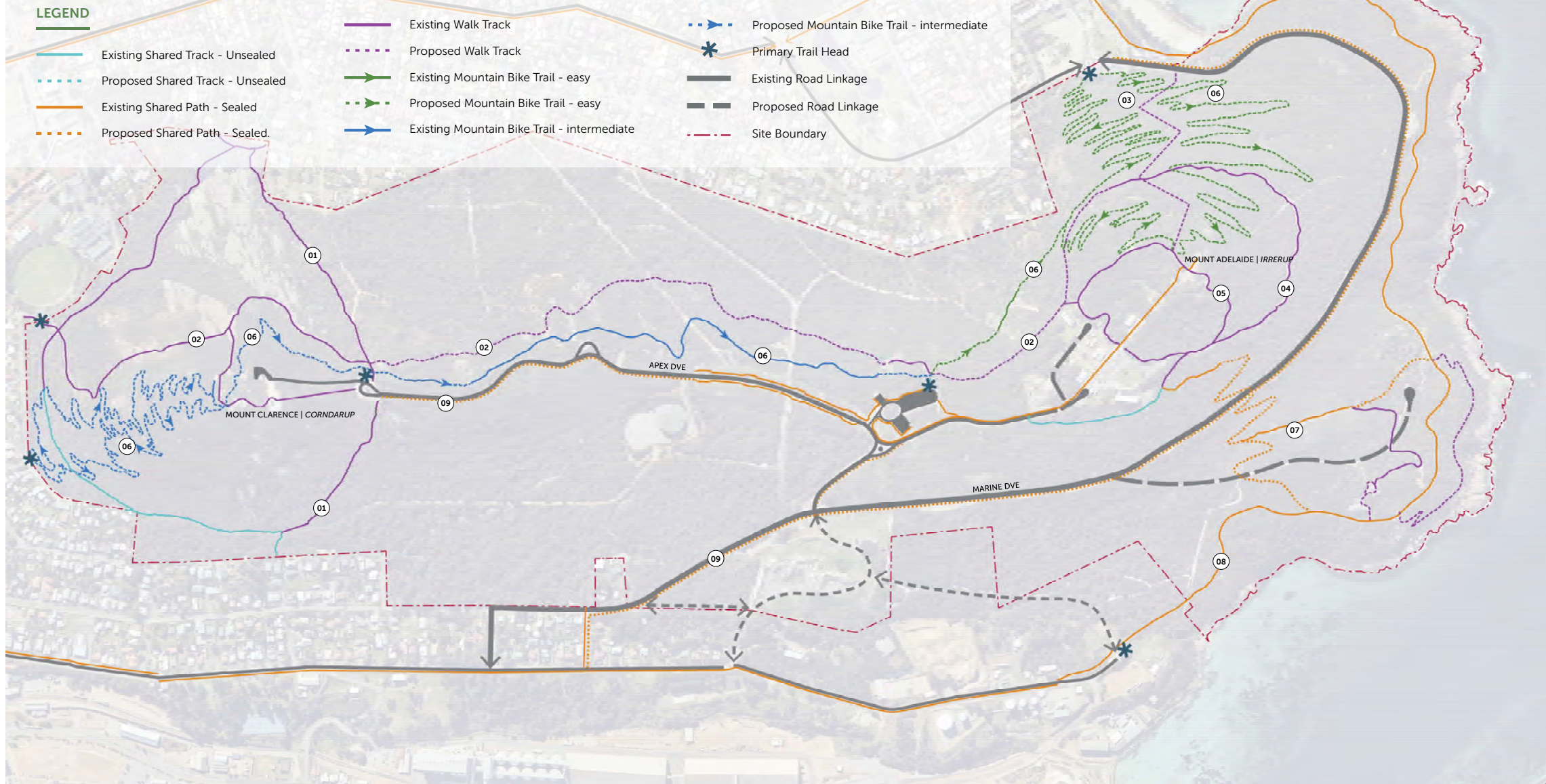
Surrounding granite outcrops are important Aboriginal ceremonial grounds, and the jarrah, marri and yate bushland hold significant aesthetic value. The precinct is the honey pot, the orientation, the microcosm of all that the mounds offer to visitors and locals alike.



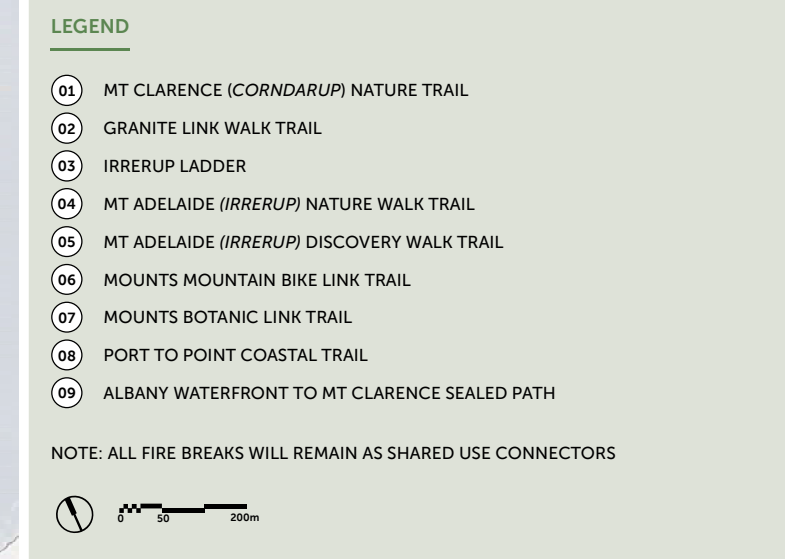
ELEVATED HERITAGE WALKWAY

Creating a memorable elevated walkway experience through the tree canopy of the historic Forts precinct, providing new vistas, points of appreciation and interpretation of the Princess Royal Harbour, King George Sound and remnant forts heritage.

Precedent image: Lotterywest Federation Walkway, Kings Park WA



TRAIL TYPE	Total Trail (length m)	Existing Trail (length m)	Proposed Trail (length m)
Walk Trail	6,456	3,877	2,579
Mountain Bike Trail Easy (Green)	6,410	77	6,333
Mountain Bike Trail Intermediate (Blue)	5,198	1,111	4,077
Dual Use Sealed Trail	2,065	949	1,116
TOTAL	20,119	6,014	14,105



ICONIC TRAIL NETWORK

A PLAN TO CONSERVE + ENHANCE + CREATE AN ENDURING LEGACY

DRAFT
CONCEPT PLAN ONLY, SUBJECT TO DETAIL DESIGN



ICONIC TRAIL NETWORK

Development of a balanced, site responsive trail network system (walkers and riders) - linking major destinations, neighbourhoods and activity nodes within the city, and catering to a range of different trail users, styles, levels of difficulty and experience (active, passive, heritage, nature) - whilst ensuring the protection of the sites' environmental, cultural and heritage values.



MOUNTAIN BIKE LINK TRAILS

A single-use link MTB link trail network through Mt Clarence (Corndarup) + Mt Adelaide (Irrerup) connecting surrounding precincts of Middleton Beach, City Centre and Waterfront and linking geographical features to provide fun and challenging experiences. The trails will cater for beginner to intermediate riders.



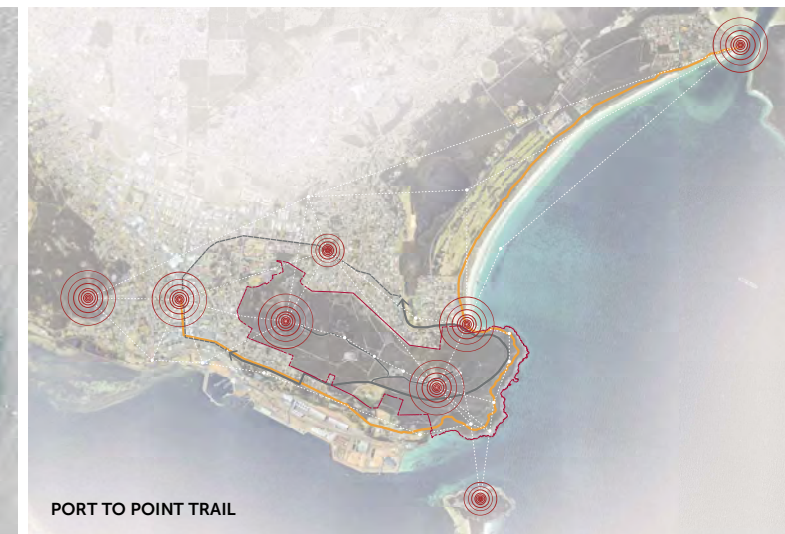
WALK LINK TRAILS

Single use link trails for walkers along the northern slope of the ridge, connecting Mt Clarence (Corndarup) + Mt Adelaide (Irrerup) nature trails. The link between Mt Adelaide + Middleton Beach will include a steep climb and is an opportunity to provide a unique natural and recreational experience (similar to Perth's 'Jacobs Ladder'), with steps, landings and panoramic views.



DRIVE TRAILS

Clear and legible, well sign posted road network with designated turn-around, drop-off and parking areas at key destinations. Marine drive offers panoramic views with potential to upgrade lookout nodes. Key areas of potential are linkages to Port cottages area and also to access down to Lower Plantagenet Battery area.



THE MOUNTS COASTAL TRAIL

A PLAN TO CONSERVE + ENHANCE + CREATE AN ENDURING LEGACY

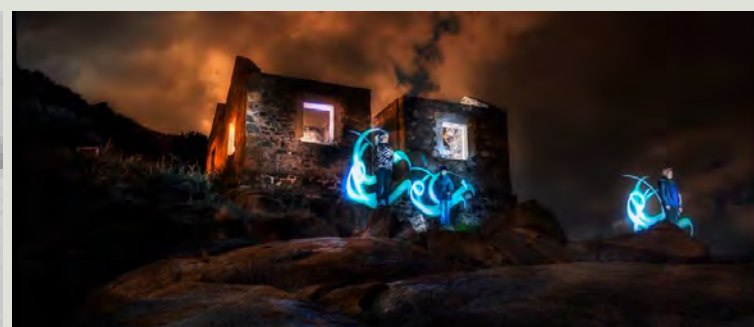
DRAFT
CONCEPT PLAN ONLY, SUBJECT TO DETAIL DESIGN



DEVELOPMENT POTENTIAL

With the rich layers of Indigenous, settlement, maritime and war history set against the unique coastal natural environmental assets, the coastal trail has untapped development potential to become a world-class cultural tourism destination. An immersive dual use walk connecting key precincts from Albany City Centre through the Mounds parkland to Middleton Beach and Emu Point linking sites of natural, cultural and historical significance.

Image Credit: Graphic produced by Propagule



CONNECTING HERITAGE SITES

The Coastal Trail will enhance Albany's coastal precinct which is currently home to various significant landmarks including; King George Sound, Albany Port, Lawley Park, Lower Plantagenet Battery, rifle range and gun emplacements, Ataturk Channel and monument, Point King lighthouse and Baudin memorial, as well as linking in with the National Anzac Centre and the proposed botanic garden displays, through to King George Sound and Ellen Cove jetty.

Image Credit: Light painting at Point King Lighthouse by artist Karim, FORM



INTERPRETATION + STORY TELLING

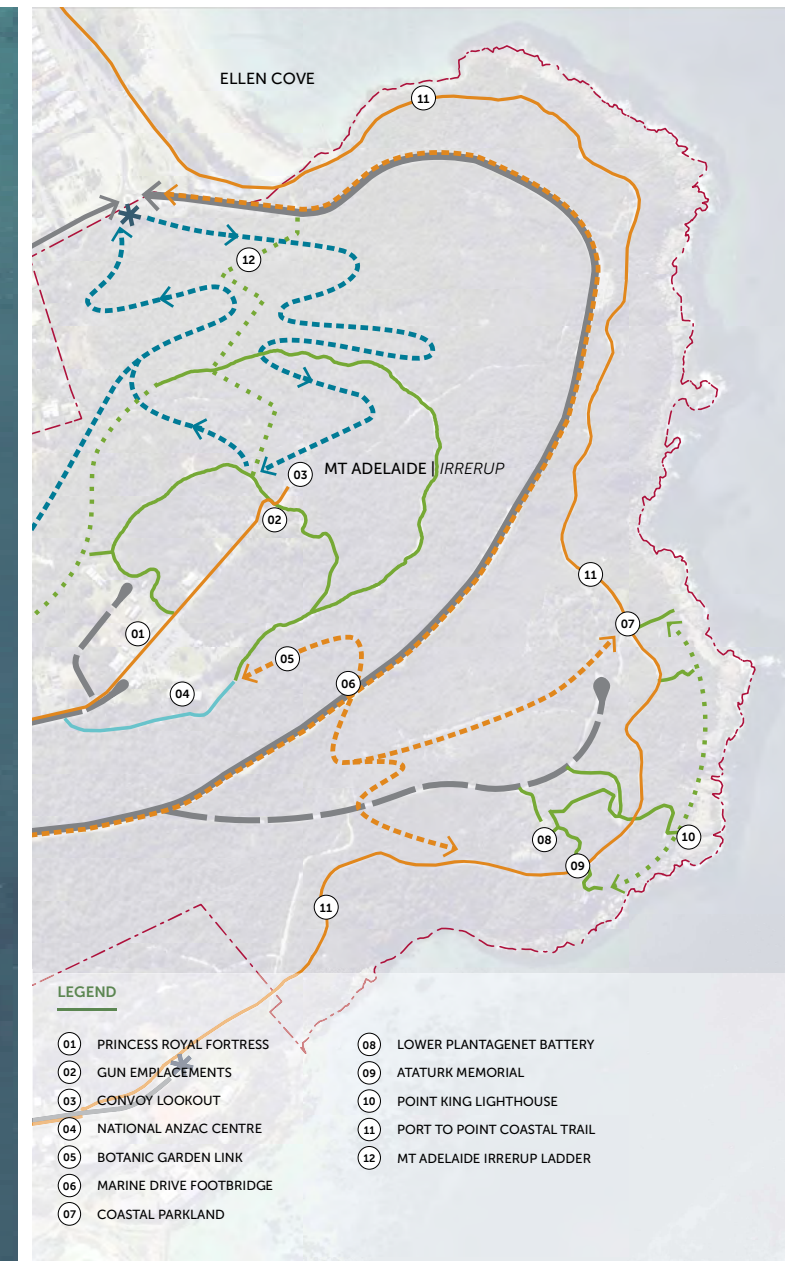
Interpretation around key themes based around: Our Community, Our Culture, Significance of Place, Our Heritage and Our Environment. Continue to roll out a consistent, clear and legible brand and way-finding system so that visitors are able to easily navigate and interpret locations and learn stories in a diverse network of activities and locations.



SCULPTURES BY THE SEA

There is potential to enhance this coastal trail with a curated collection of three dimensional artworks, articulating the exhilarating and untamed identity existent in its landscape and coastline. The objective will be to implement a high-quality international sculpture trail, increasing cultural understanding, driving visitation, generating economic benefits and activating Albany's parks, beaches and public spaces. The coastal trail is an opportunity for Albany to display a permanent public art experience unlike anywhere else and offers a catalyst for West Australia's artistic and cultural capital.

Image Credit: Shifting Horizons, April Pine, Sculptures by the Sea Bondi 2018



CONCEPT PLAN
Graphic produced in collaboration with Propagule

BOTANIC LINK: RECONNECTING UPPER + LOWER FORTS

A PLAN TO CONSERVE + ENHANCE + CREATE AN ENDURING LEGACY

DRAFT
CONCEPT PLAN ONLY, SUBJECT TO DETAIL DESIGN



HERITAGE SIGNIFICANCE

The Princess Royal Fortress (opened in 1893) is a valued local asset of national historical significance, with significant potential to expand and improve the experience of the National Anzac Centre and Mounts community precinct - by recognising the cultural and historical significance of the place, focusing on the continued discovery, interpretation and improved visibility of unique stories, people and places.



RE-CONNECT + RESTORE

Physically re-connect upper Princess Royal Fortress and lower Plantagenet Battery sites through trails and interpretive reveals of hidden sites and history. Restore and interpret original batteries and landscape settings (including gun emplacements, magazines, shell stores and bunkers). Target appeal and participation of different user groups / generations through the adaption of heritage assets and development of more relevant and engaging content and experiences.



BOTANIC LINK

Inspiring, informing, living research centre, connecting people with the local flora and fauna. The Mounts Botanic Link celebrates the spectacular, unique and diverse flora and fauna of the Albany south coast region and is envisioned to be part of the worldwide network of botanic gardens committed to plant conservation. The natural landscape will be displayed for the enjoyment and education of visitors and can be used for research into plant classification and biology. The Gardens can also cultivate plants threatened in the wild.

Precedent image: Melbourne Square, Taylor Cullity Lethlean

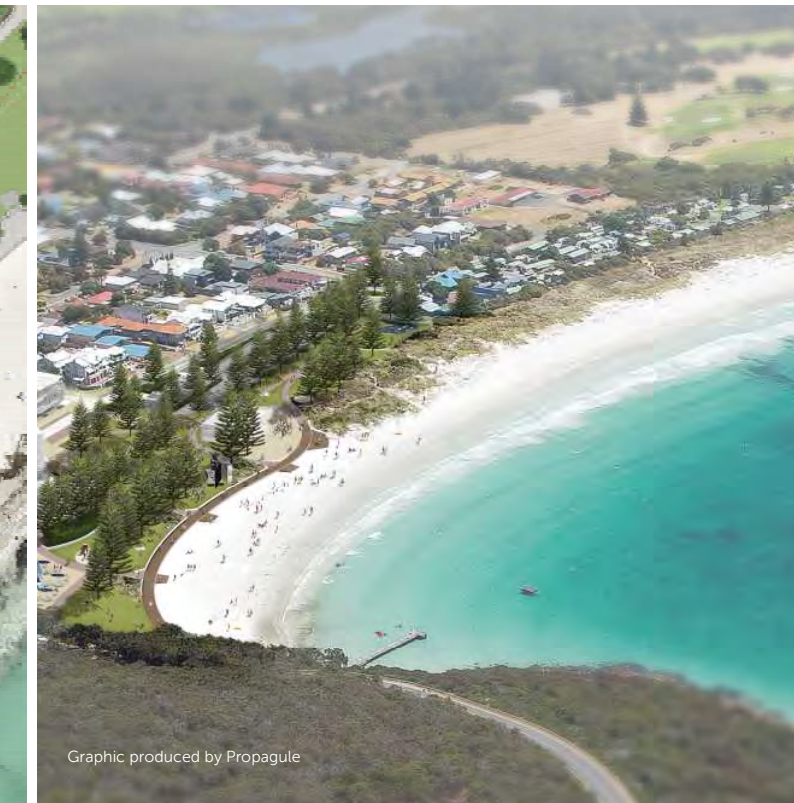


MARINE DRIVE FOOTBRIDGE

An iconic architectural pedestrian overpass at the intersection of the Botanic Garden link walkway and Marine Drive, marking the historic re-connection of the upper and lower Forts precincts.

Precedent image: Webb Bridge, Denton Corker Marshall and Robert Owen, Docklands Melbourne

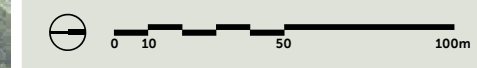
Precedent image: Vancouver Land Bridge, Jones & Jones Architecture



Graphic produced by Propagule

LEGEND

- 01 TRAILHEAD AT MIDDLETON BEACH
- 02 MARINE DVE OVERPASS
- 03 LOOKOUT PLATFORMS
- 04 IRRERUP LADDER (830m)
- 05 CONVOY LOOKOUT
- 06 GUN EMBLACEMENTS
- 07 CONVOY WALK + PRINCESS ROYAL FORTRESS



Graphic produced in collaboration with Propagule and Seedesign Studio

MOUNT ADELAIDE IRRERUP LADDER

A PLAN TO CONSERVE + ENHANCE + CREATE AN ENDURING LEGACY

DRAFT
CONCEPT PLAN ONLY, SUBJECT TO DETAIL DESIGN



IRRERUP LADDER

The Irrerup Ladder forms the final link in the single use link trail for walkers along the northern slope of the ridge, connecting Mt Clarence (Corndarup) + Mt Adelaide (Irrerup) nature trails.

The link between Mt Adelaide + Middleton Beach will include a steep climb and is an opportunity to provide a unique natural and recreational experience (similar to Perth's 'Jacob's Ladder'), with steps, landings and panoramic views.

Precedent image: Jacob's Ladder, Kings Park Escarpment, Perth WA



HEALTHY ACTIVE COMMUNITY

The project will improve the social well-being and interaction of the regional community and foster positive cultural outcomes with a strong sense of place.

Precedent image: City of Rockingham



ENVIRONMENTAL SUSTAINABILITY

Protection and conservation of the fragile granite ecosystems by elevating the steps over granite outcrops and avoiding sites with critical flora. Home to more native plants than Perth's Kings Park, the bushland is largest precinct on the mounts. There are distinctive and localised Albany coastal headland vegetation on the mounts, dominated by low woodlands, forest and thickets, and then the diverse granite outcrop vegetation layers, all responding to differential soil depth and moisture.

Precedent image: Heathcote Reserve, Applecross WA, Landmark Access Structures



TRAIL-HEAD, SHELTER + WAY-FINDING

A trail-head located at the base of Mt Adelaide in Middleton Beach will be the gateway to the Mounts link trails including the Irrerup Ladder. The shelter will display way-finding and interpretation of the site.

The existing Convoy Lookout on Mt Adelaide will form the summit trail head and the start of the Irrerup ladder descent.

Precedent image: Easet Point Park Pavilions, Lake Ontario by Plant Architects



LEGEND

- | | |
|--|---------------------------------------|
| 01 WATERFRONT TO MOUNTS LINK PATH | 10 CARPARK, TRAIL HEAD |
| 02 SUMMIT TO SUMMIT LINK PATH | 11 PRINCESS ROYAL FORTRESS |
| 03 MARINE DRIVE ROUNDABOUT | 12 NATIONAL ANZAC CENTRE |
| 04 MARINE DRIVE CYCLE PATH | 13 MT ADELAIDE SUMMIT, CONVOY LOOKOUT |
| 05 MARINE DRIVE LOOKOUT | EXISTING SEALED SHARED PATH |
| 06 MT CLARENCE SUMMIT, PADRE WHITE LOOKOUT | PROPOSED SEALED SHARED PATH |
| 07 DESERT MOUNTED CORPS MEMORIAL | PROPOSED ASPHALT CYCLE PATH |
| 08 CARPARK, TRAIL HEAD | |
| 09 APEX LOOKOUT | |



SHARED PATH LINKS: WATERFRONT - MOUNTS - MIDDLETON BEACH

A PLAN TO CONSERVE + ENHANCE + CREATE AN ENDURING LEGACY

DRAFT
CONCEPT PLAN ONLY, SUBJECT TO DETAIL DESIGN



SAFE CONNECTIONS + TOURISM INFRASTRUCTURE

A priority in delivering the MOUNTS iconic trail network will be the creation of safe and accessible connections from the Albany Waterfront, City Centre and Middleton Beach up to Princess Royal Fortress on Mt Adelaide and the Desert Mounted Corps Memorial on Mt Clarence. The link paths will provide critical links between major destinations, neighbourhoods and activity nodes and promote formal recreation and tourism utilisation of the trails and assets within the MOUNTS Precinct. The Port of Albany has become a regular stop over for cruise ships and there is an urgent need to enhance the visitor experience by improving pedestrian infrastructure and wayfinding from the cruise ship berth.



MARINE DRIVE UPGRADES

Formalise the intersection of Burgoyne Rd, Forts Rd and Marine Dve with a roundabout at the intersection and entry statement for the MOUNTS Precinct. A cycle path along the length of Marine Dve will provide a safe cycle connection from Middleton Beach to the MOUNTS and City Centre, alleviating pressure of higher speed cyclists currently utilising the Port to Point Coastal Trail. A major refresh of the popular but aging Marine Dve Lookout and parking facility to create a more accessible, informative and dramatic experience, enhancing coastal views and interpretive opportunities over King George Sound, and improving connections to coastal trails and parkland.



WATERFRONT TO MOUNTS LINK PATH

An extension of the sealed path along Burgoyne Road and Forts Road providing an accessible path from the Albany Waterfront up to Princess Royal Fortress. Besides providing a link for residents and visitors to the CBD, this path is seen as critical to providing a safe link for Cruise Ship visitors to the National Anzac Centre and MOUNTS precinct.



SUMMIT TO SUMMIT LINK PATH

An extension of the sealed path along Apex Drive providing an accessible path between the Avenue of Honour and Desert Mounted Corps Memorial. The path extension will create a continuous pedestrian link from the Mt Clarence summit to the Mt Adelaide summit. This path is particularly important to ensure that walkers are not forced onto dedicated Bike Trails in the MOUNTS precinct.

THE NATURAL ENVIRONMENT

NOONGAR CULTURAL HERITAGE

EUROPEAN EXPLORATION

SHIPPING + MARITIME

TOURISM + RECREATION

DEFENCE + WAR

MONUMENTS + MEMORIALS

THE TOWN + SETTLEMENT

WHALING + INDUSTRY

PARKS + PICTRICS

MIDDLETON BEACH

PRINCESS ROYAL FORTRESS

the AMAZING SOUTH COAST

NATIONAL ANZAC CENTRE

CLIMATE

FLORA + FAUNA

BIODIVERSITY SIGNIFICANCE

MARINE ECOLOGY

FRIENDLY FIGHTER

CONNECTION TO THE MOUNTAINS

CREATION STORIES

MEMANG PEOPLE

FIRE

THE DUTCH

THE FRENCH

THE BRITISH

ENCOUNTERS

CHARLES DARWIN

PWO ESA

LIGHTHOUSES

WHALING INDUSTRY

MARINE DRIVE

EVRE PARK

MIDDLETON BEACH

THE PROTECTION OF THE SOUND AND PRINCESS ROYAL HARBOUR IS OF VITAL IMPORTANCE FOR THE GENERAL SECURITY OF THE AUSTRALIAN VIOLENS IN TIME OF WAR. IF LEFT UNDEFENDED THE SOUND BECOMES THE WEAK POINT IN THE AUSTRALIAN SYSTEM OF DEFENCE.

THE FIRST CONVOY, ALONG WITH MANY OTHER VESSELS OF THE GREAT WAR, ARE COMMEMORATED IN THE NATIONAL ANZAC CENTRE ON MOUNT ADELAIDE, WHICH OPENED ON THE CENTENARY OF THE CONVOY'S DEPARTURE IN 2014.

Southwest Australia has emerged as one of the great areas in the temperate regions of the world. Half the species here are found nowhere else on earth and there's 8,000 species all up in the southwest floristic region, so it's incredibly rich.

This is the oldest of the old, the granite rocks that form the low hills around Albany are a quarter of the age of the Earth itself - more than a billion years old - the age of the landscape appears to be part of the story.

The interactions between the European explorers (later settlers) and the Menang people was well documented and generally positive. The Menang were understandably wary of these intruders, and they were initially confused with returning spirits of the dead. Noongar tradition held that the dead were white, so these white faces were intimidating at the outset.

The first Commandant, Major Edmund Lockyer, was keen to call the settlement Fredericktown, after Frederick Augustus, Duke of York and Albany, but this name never became official. Until 1831, it was known as King George for George's Sound, but Governor James Stirling changed it to Albany.

Eventually a great convoy was gathered comprising 38 troopships (Australian and New Zealander) and six warships (including the Japanese cruiser Ibuki). All but two gathered in King George Sound in late October 1914 to provision for the voyage across the Indian Ocean and on to Europe. On board were almost 30,000 troops and 8,000 horses from all parts of the country, except, ironically, Western Australia. Local troops trained at Blackboy Hill camp near Perth and were embarked on two ships - the Medic and Ascanius - that left from Fremantle.

"The cliffs around Albany were leaning ahead looking very desolate in their misty grey mantle... Looking through the glasses Albany appears to be a very pretty place... As we passed down the Harbour the sun lit up the hills on either side and our last view of Australia was a very pleasing if sad one."

The Noongar name for Albany itself is Kimpaling, or Place of Rain. The Noongar people have inhabited the area for thousands of years. They are one of the oldest surviving cultures of the world whose spirituality rests on ancestral beliefs of creation.

"King George's Sound had been chosen as the proper place in which to prepare ourselves for the examination of the south coast of Terra Australis, and I sought to make the best use of the advantages it might furnish."

"They possess here some advantages: the climate is very pleasant, and more rain falls than in the Eastern colonies... The second grand advantage is the good disposition of the aboriginal blacks."

Once Albany became established as a major destination for shipping coming from both east and west, it became apparent that guidance, in the form of lighthouses, was needed. This was borne out by a series of shipwrecks on the dangerous south coast.

Whaling was the first industry in Western Australia. The first recorded whaling ship to visit the area was the Ellgood in 1800, twenty-six years before European settlement.

Albany's moderate climate and unspoiled environment made picnicking a popular pastime in the 19th and early 20th centuries. Many locations lent themselves to outdoor meals and excursions and locals were quick to take advantage.

"Circling Mount Clarence, and providing one route to Middleton Beach, is the Marine Drive, one of the finest scenic drives in Australia. Running along the hillside, high above the sea, the Drive permits views over the whole of the Sound and the inner Harbour. It leads on to Middleton Beach, with its sheltered cove at the West end and, farther round, excellent surf facilities where the rollers sweep in across the Sound."

Middleton Beach became an increasingly popular place to visit towards the end of the 19th century, especially for those arriving by rail from the eastern regions following the discovery of gold at Coolgardie.

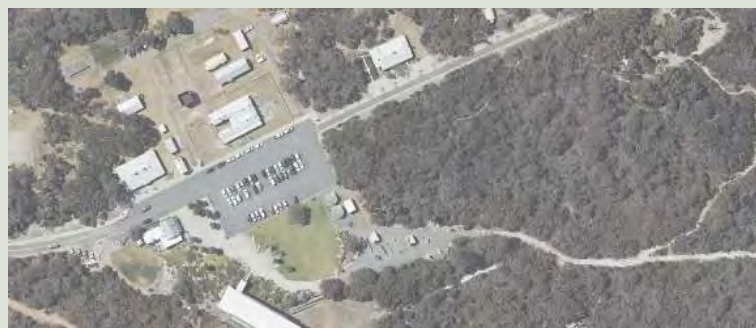
Tourism increasingly became vital to Albany's progress, with the golf links and Marine Drive being constructed in order to attract visitors to Middleton Beach and the town generally.

Over the decades, families have enjoyed camping, surfing, and learning to swim at this beautiful beach.

LEARNING, DISCOVERY + STORIES

A PLAN TO CONSERVE + ENHANCE + CREATE AN ENDURING LEGACY

DRAFT
CONCEPT PLAN ONLY, SUBJECT TO DETAIL DESIGN



ENVIRONMENT CENTRE

A network of linked educational spaces and experiences supporting the discovery of the site's rich nature, culture and history. New designated indoor and outdoor spaces and facilities, and the adaptive reuse of existing Forts buildings, will be tailored to support school groups, guided tours and storytelling events, and connected to related traffic, parking and pedestrian upgrades.



LEARNING + EDUCATION

Engage the next generation and facilitate a better understanding of the site and region through leading research, education and interpretation - increasing the potential for the discovery and interpretation of natural environment and rich layers of history, through protecting and enhancing natural assets; facilities and built fabric; collections and displays; stories and memories.



INTERPRETATION

Site-wide interpretation strategy connecting stories, interpreting information, connecting view lines to adjacent precincts and neighborhoods, key themes based around: Our Community, Our Culture, Significance of Place, Our Heritage and Our Environment.

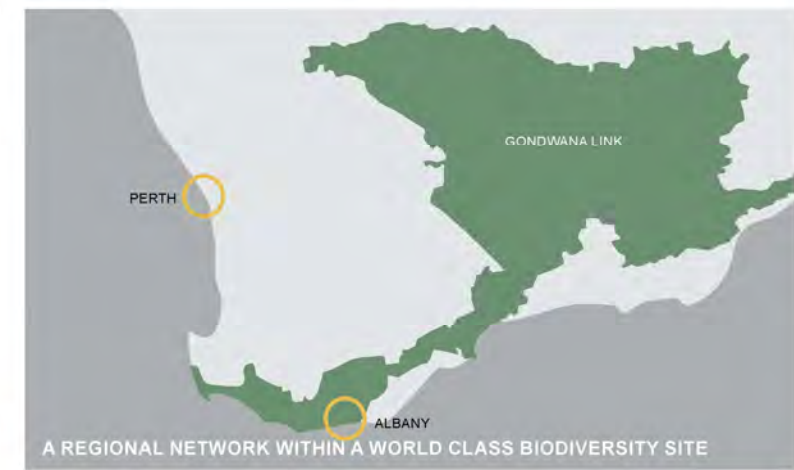
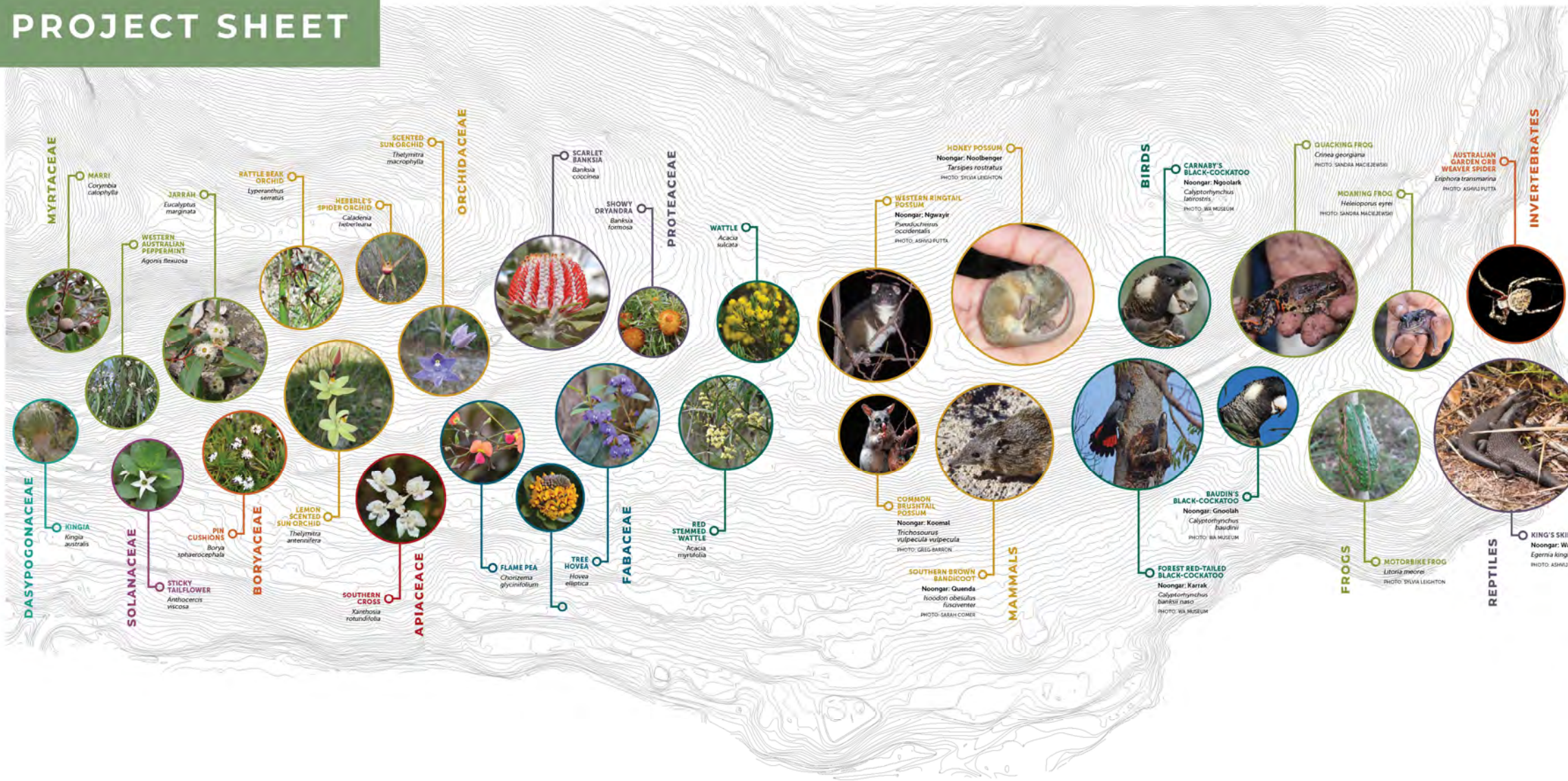


NATURE PLAYGROUND

Development of a place to play and promote nature based activities, located at Princess Royal Fortress in the area of the existing maritime gun artefacts and native bushland.

Precedent image: Kings Park Interpretation Signage

Image credit: Amanda Miller Photography



WESTERN AUSTRALIA'S 1ST REGIONAL BOTANIC GARDEN

A PLAN TO CONSERVE + ENHANCE + CREATE AN ENDURING LEGACY

DRAFT
CONCEPT PLAN ONLY, SUBJECT TO DETAIL DESIGN



THE MOUNTS BOTANIC GARDEN

Botanic gardens are crucial in the educate of horticulture and landscaping, plants and biological communities, and raising community awareness about biodiversity and plant conservation. The Mounts Botanic Garden is located within one of the world's most bio-diverse and botanically important hot spots. Key objectives are to:

- Conserve and enhance natural bushland and rare granite outcrop environments aligned with best practice natural reserve management.
- Strategically implement key nodes of visitor infrastructure to support local community and major events, including a tourist and education hub, a



DISPLAY GARDENS

network of iconic link trails and lookouts, high quality public spaces and display gardens, glass houses, plant nursery facilities and visitor facilities.

- Ensure best practice future management promoting sustainable practices and value systems for caring for country, completing the biological inventory, researching the major threatening processes and monitoring and taking appropriate action to conserve those species and communities most at risk.

Image Credit: Kings Park Botanic Garden Festival, Tourism Australia



RESEARCH FACILITY + INFRASTRUCTURE

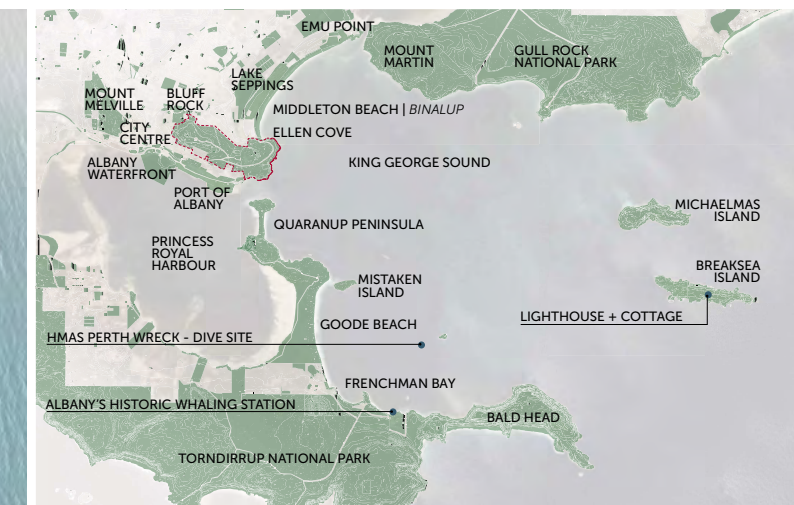
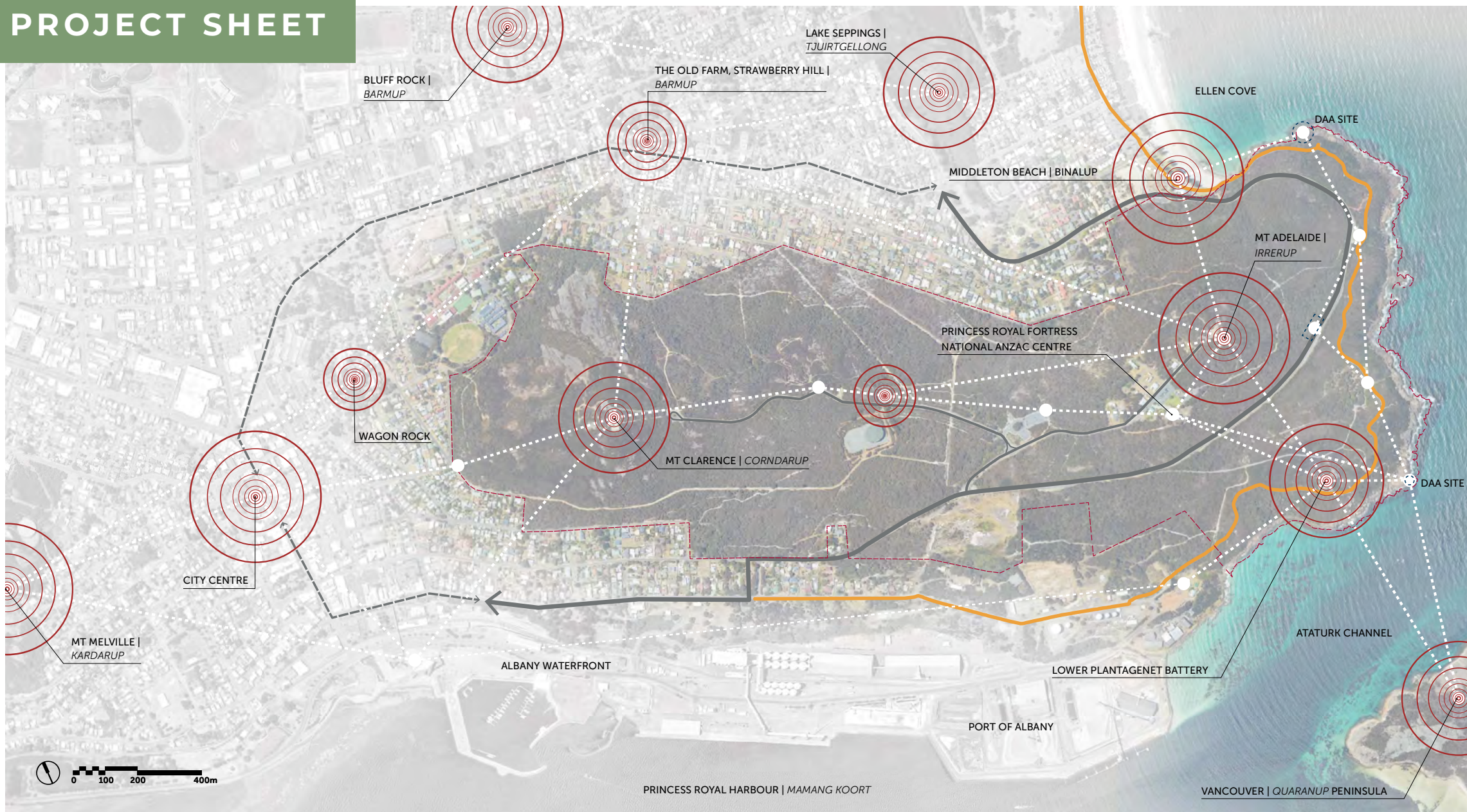
Collect, display and interpret the botanical riches of the Great Southern in the grounds of the National Anzac Centre, Princess Royal Forts, and upper Botanic Link precinct descending to the Coastal Trail. The gardens seek to create a living collection and memorable experience of our world class biodiversity.



RESEARCH FACILITY + INFRASTRUCTURE

Consolidate a node of site infrastructure through adaptive reuse and new construction to support the working operations, research and management functions of the Bushland Botanic Gardens, including visitor hub, glasshouse, plant nursery and storage facilities.

Precedent image: idA Greenhouse, Grueningen Switzerland



OUTDOOR GATHERING SPACES

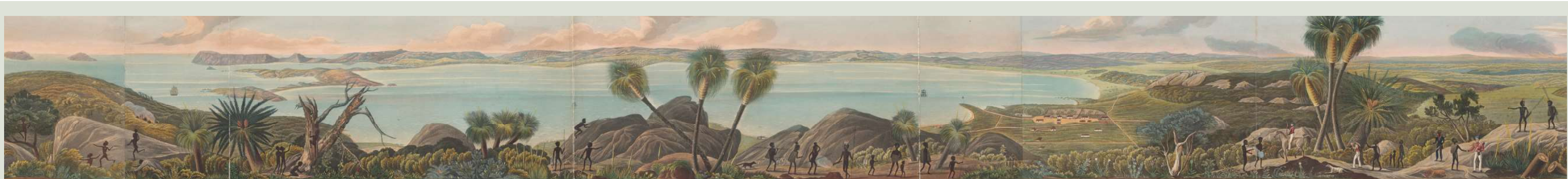


NOONGAR RANGERS + TOURISM

NOONGAR MENANG: ABOUT COUNTRY

A PLAN TO CONSERVE + ENHANCE + CREATE AN ENDURING LEGACY

DRAFT
CONCEPT PLAN ONLY, SUBJECT TO DETAIL DESIGN



RECOGNISING NOONGAR MENANG CULTURE

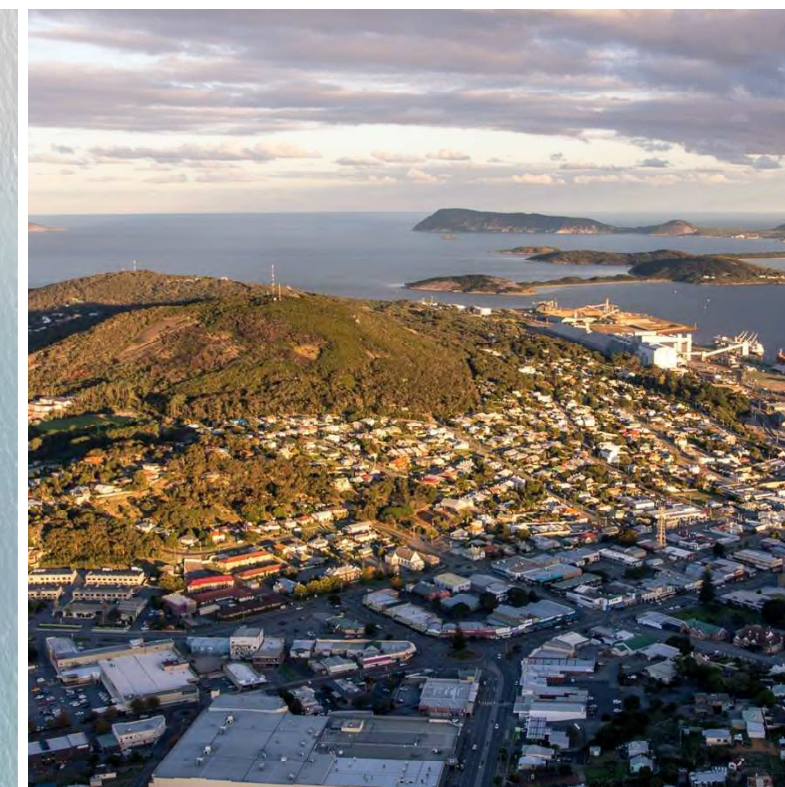
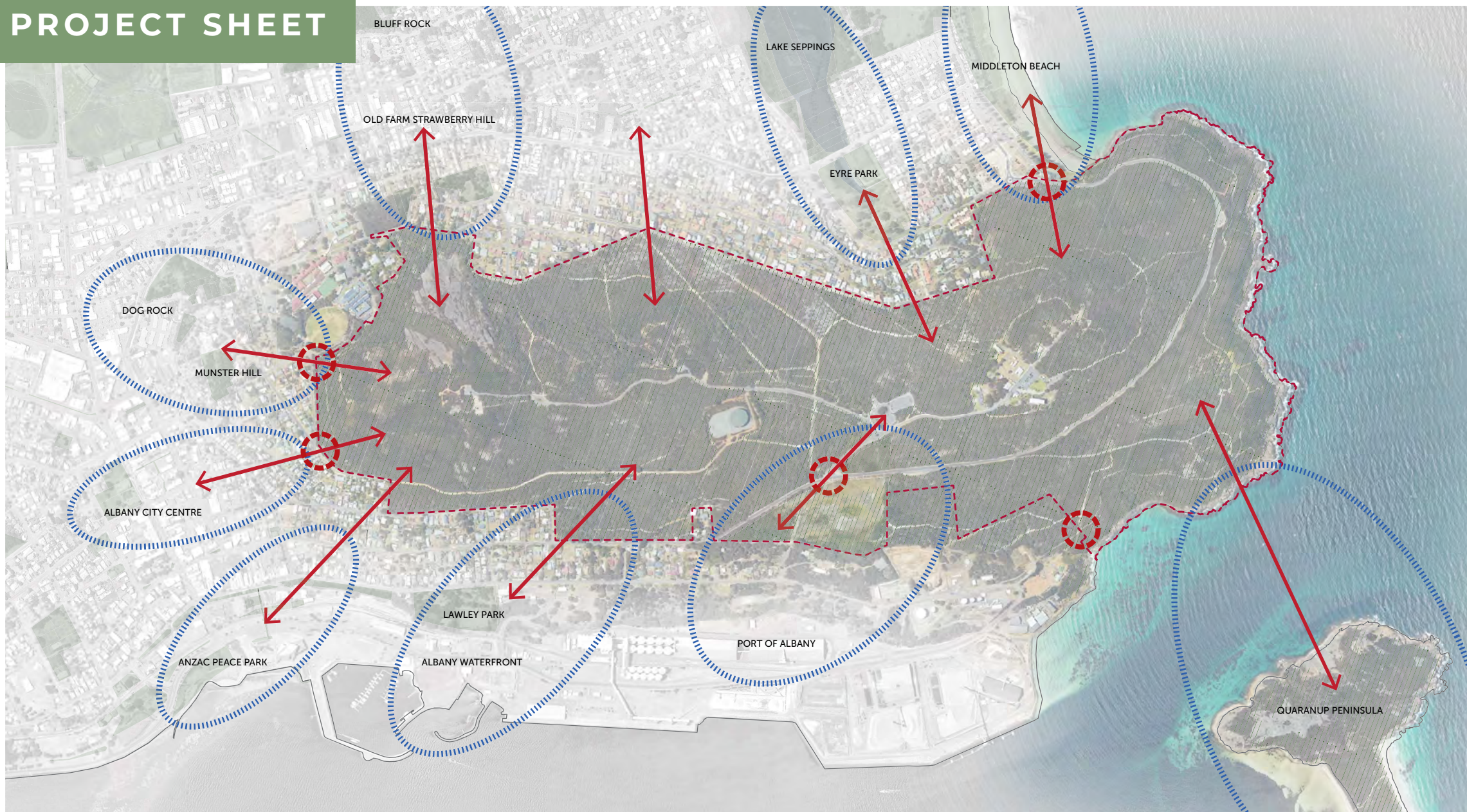
Explore and develop opportunities for how public art, storytelling and interpretation can act as a mechanism for cultural exchange, creative expression and place enhancement and creates new layers of narrative and substance to the locality, while cherishing and showcasing the existing qualities and character of the place.

THE DALE PANORAMA (ACTUAL SIZE 3.0M)

In 1833, a young army officer, Lieutenant Robert Dale visited Albany, when he sketched a sweeping panorama of the landscape from the summit of Mt Clarence and subsequently printed in London the following year (1834). The Dale Panorama, while not the earliest image of the town, is certainly the most far-reaching and comprehensive pictorial summary of life just after European settlement. It is also an evocative portrayal of European-Menang relationships which gave rise to the description of Albany as the 'Friendly Frontier'. In the foreground, Dale painted details of the native flora, so foreign to English eyes. Much of his drawing was botanically accurate, although many of the plants are no longer evident on Mt Clarence. The sightlines glimpsed in the original Dale Panorama can still be traced today.

BOTANIC GARDENS + DUAL-NAMING OF PLACES

The artwork has inspired a cultural overlay which underpins the botanic gardens: an imperative to tell the story of Albany from different perspectives. The trails through the Mounts Botanic Gardens is the equivalent of walking a modern-day Dale Panorama that shows Albany as it is today. Botanic Gardens also make important contributions toward cultural exchange and storytelling with the opportunity to help recognise Menang Noongar culture as central to the region's identity. The City is also working together with traditional owners, the Menang people, on another significant project, 'Dual-Naming', to jointly dual-name places across the City. The project was sparked by the Yurimun exhibition in 2016, which featured 14 historic Noongar artefacts collected by English settlers on loan to Albany from the British Museum.



GATEWAY NEIGHBOURHOODS

The challenge and the opportunity is to implement a visitor orientation and wayfinding strategy to refine the existing hierarchy of park 'gateway' entry points of arrival, activity nodes and network of destinations to help user navigation and promote and improve visitor experience. Also to link-site wide projects, events, programmes and initiatives across the City. Analysing the economic and social importance of Mt Adelaide and Mt Clarence and the site's context as a central hub of activity within Albany the surrounding area is dissected into a number of Gateway Neighbourhoods. Each of the surrounding neighbourhoods contain various assets, with their own distinct social, environmental and economic contributions.

GATEWAY NEIGHBOURHOODS

A PLAN TO CONSERVE + ENHANCE + CREATE AN ENDURING LEGACY

DRAFT
CONCEPT PLAN ONLY, SUBJECT TO DETAIL DESIGN



CITY CENTRE



ALBANY WATERFRONT



PORT OF ALBANY



LAWLEY PARK



MIDDLETON BEACH



OLD FARM AT STRAWBERRY HILL



MARINE DRIVE INTERSECTION



TRAILHEAD + WAYFINDING POINTS

Analysing the economic and social importance of Mt Adelaide and Mt Clarence and the site's context as a central hub of activity within Albany the surrounding area is dissected into a number of 'Gateway Neighbourhoods'. Each of these neighbourhoods contain various assets, with their own distinct social, environmental and economic contributions. The distinct character of these neighborhoods are influenced by their aspect and land-use.

- To the north lies residential neighborhoods and significant sites including; Middleton Beach, Lake Seppings, Eyre Park, Old Strawberry Hill Farm and Bluff Rock.
- To the east lies a more urbanised environment, punctuated by Munster Hill and Dog Rock. Significant sites include; Albany Senior High School, York Street and Albany City Centre.
- The south interfaces with the remarkable Princess Royal Harbour and historic harbour-side sites including; Peace Park, Stirling Terrace, Albany Waterfront, Lawley Park and the industrialised interface with the Albany Port, highlighting inland rural economies.
- To west is the awe-inspiring coastal interface. Marine Drive and the coastal boardwalk provide multiple vantage points and long views and vistas over Ataturk Channel and Kind George Sound.

Precedent image: Ipper Park Plaza Wayfinding Shelter