

LOCAL DEVELOPMENT PLAN

Lot 67 Middleton Road
Mira Mar. City of Albany

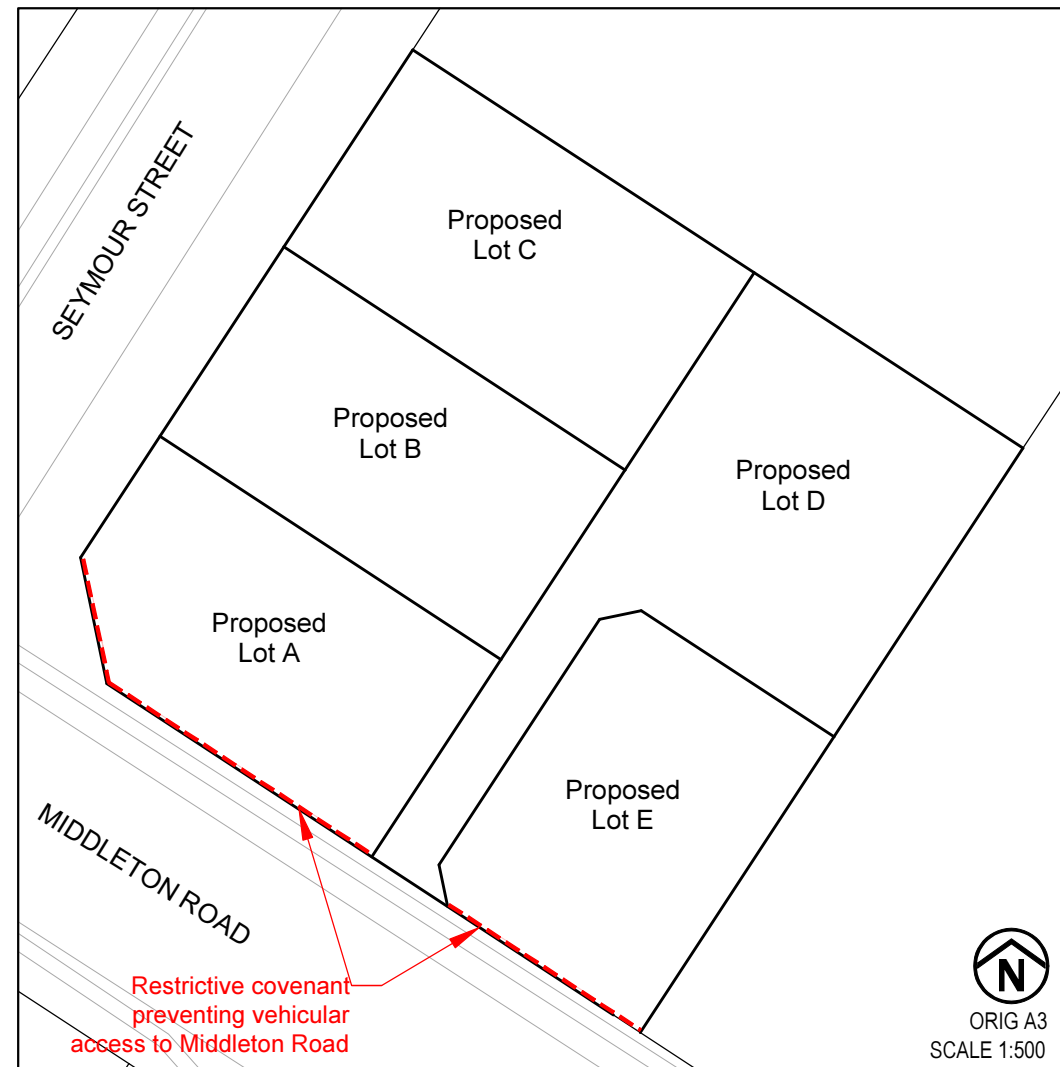
Proposed Lot E

WAPC Reference 159270

Condition 8

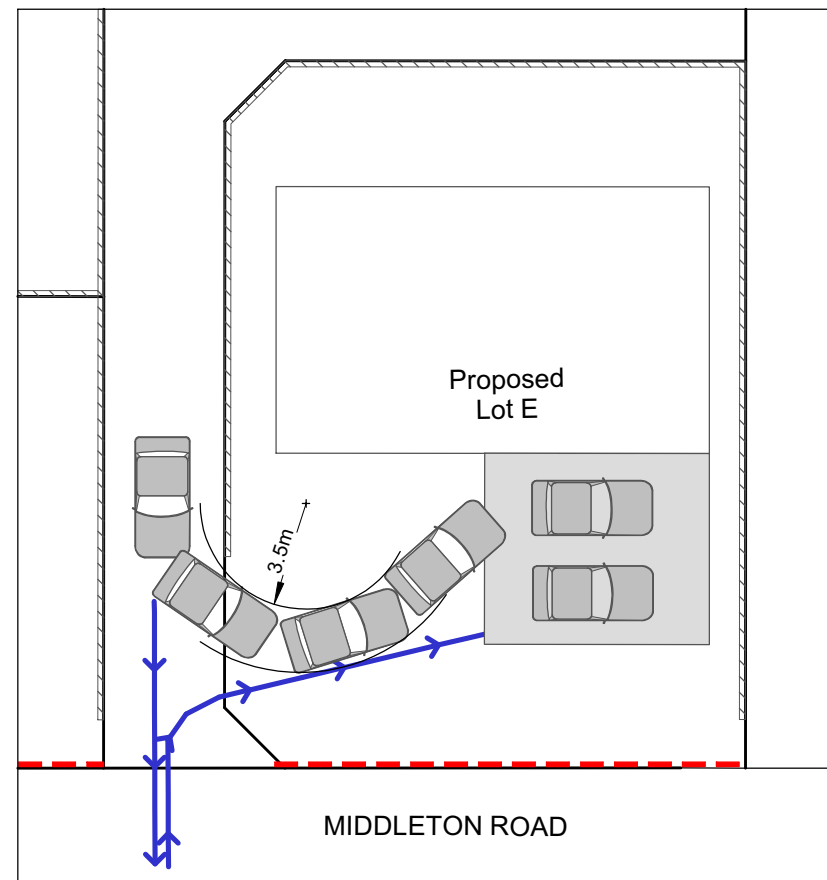
Future development on Lot E to provide adequate manoeuvring area, to allow vehicles to exit onto Middleton Road in a forward gear.

ALL AREAS AND DIMENSIONS ARE SUBJECT TO SURVEY

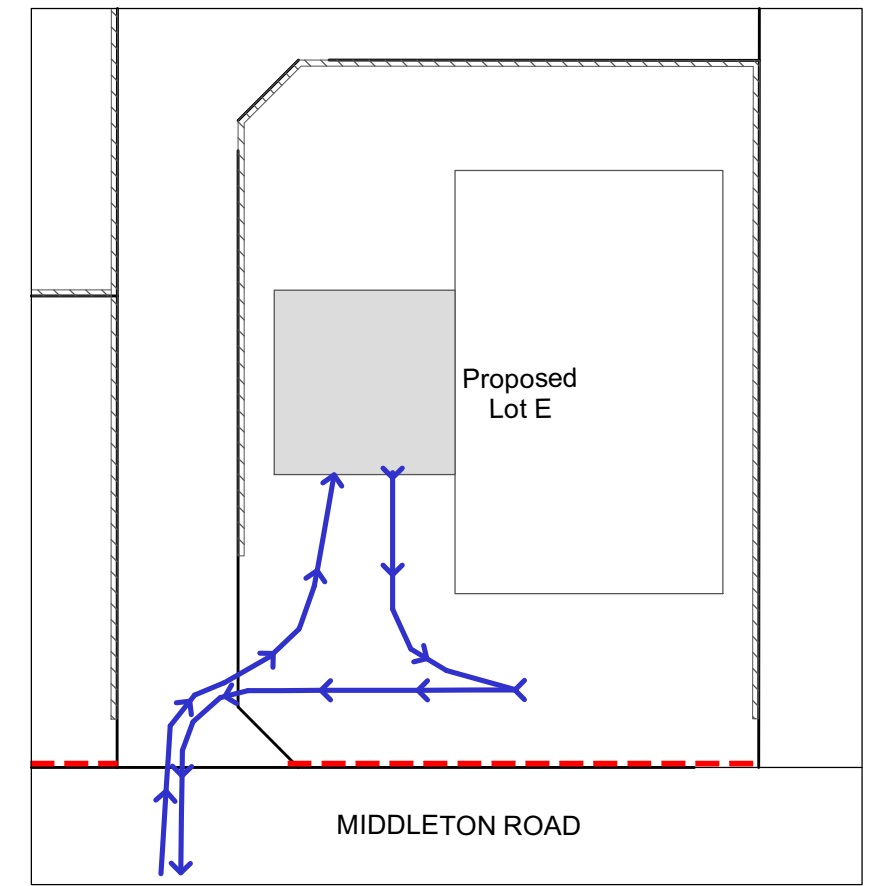


INDICATIVE DEVELOPMENT

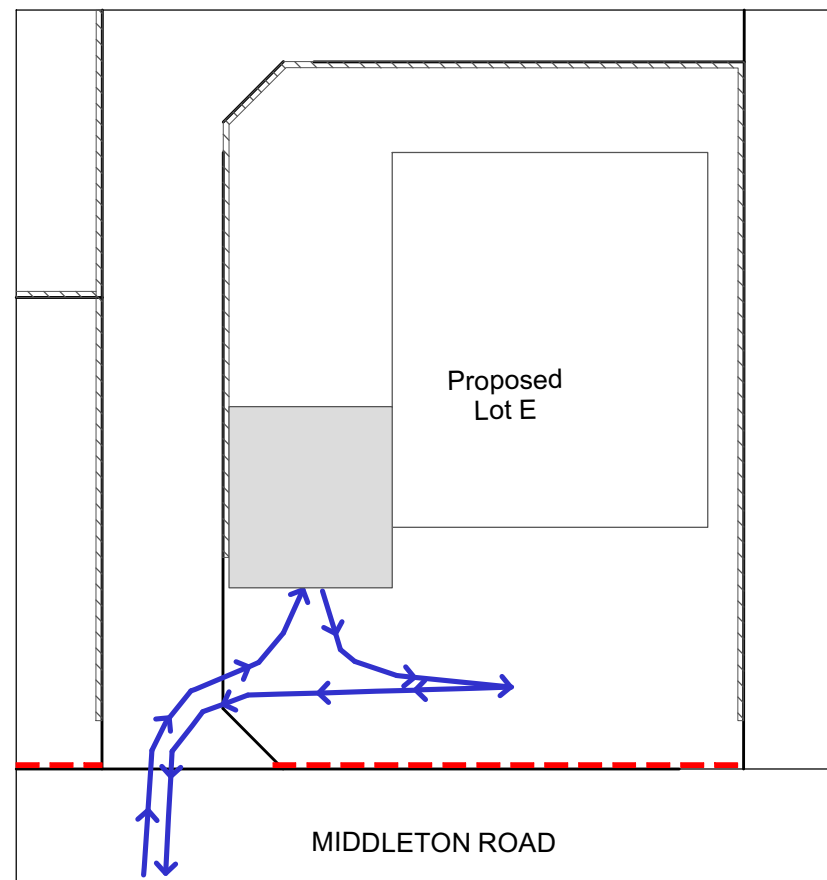
Example One



Example Two



Example Three



Note: All vehicle manoeuvring and car parking is to comply with AS2890.1:2004 Parking facilities Off-street car parking, to the satisfaction of the City of Albany.

Example One shows how the battle axe leg access to Lot D can be used to enable a car to manoeuvre so that it can exit in forward gear. The garage will require a minimum 3m setback from the primary street and the wall parallel to the street must include openings.

Example Two shows how the carport/garage and dwelling on Lot E can be arranged so that a vehicle can manoeuvre within Lot E in order to exit in forward gear.

Example Three is a variation of Example Two. The garage must be setback a minimum of 4.5m from the primary street.

LEGEND

- No Vehicle Access
- Retaining Walls
- Indicative Carport/Garage Location
- Indicative Manoeuvring Lines
- Indicative Car Line



AYTON BAESJOU
PLANNING
59 Peels Place
ALBANY WA 6330
Ph 9842 2304 Fax 9842 8494