

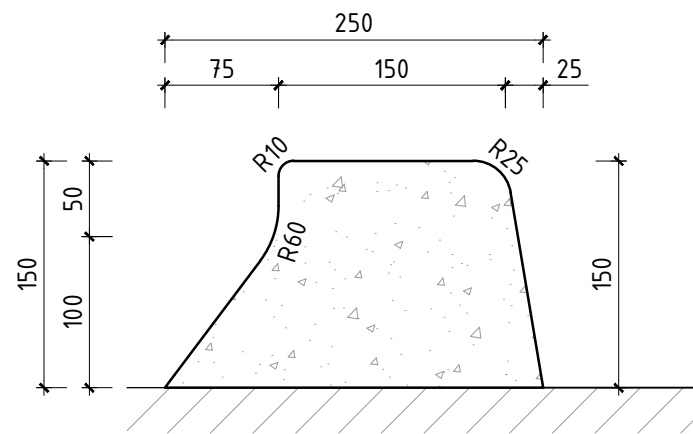
CITY OF ALBANY ENGINEERING SERVICES

STANDARD CONSTRUCTION DRAWINGS

<u>CATEGORY</u>	<u>DRAWING No.</u>	<u>DRAWING TITLE</u>	<u>REVISION</u>
DRAINAGE	STD-01-01	TYPICAL MANHOLE	REV 0
	STD-01-02	UNIVERSAL SIDE ENTRY PIT	REV 0
	STD-01-03	COMBINATION SIDE ENTRY PIT	REV 0
	STD-01-04	GRATED GULLY PIT	REV 0
	STD-01-05	HOUSE CONNECTION PIT	REV 0
	STD-01-06	UNDERGROUND STORAGE PIT	REV 0
	STD-01-07	KERB OUTLET	REV 0
KERBING	STD-02-01	TYPE 1 KERB PROFILES	REV 0
	STD-02-02	TYPE 2 KERB PROFILES	REV 0
	STD-02-03	TYPE 3 KERB PROFILES	REV 0
	STD-02-04	CONCRETE APRON	REV 0
PATHWAYS	STD-03-01	CONCRETE PATHWAY DETAILS	REV 0
	STD-03-02	ASPHALT PATHWAY DETAILS	REV 0
	STD-03-03	PEDESTRIAN RAMP - TYPE 1	REV 0
	STD-03-04	PEDESTRIAN RAMP - TYPE 2	REV 0
SIGNS	STD-04-01	STREET NAME SIGNS	REV 0
CROSSOVERS	STD-05-01	STANDARD CROSSOVER - CONCRETE	REV 0
	STD-05-02	STANDARD CROSSOVER - ASPHALT	REV 0
	STD-05-03	STANDARD CROSSOVER - PAVED	REV 0

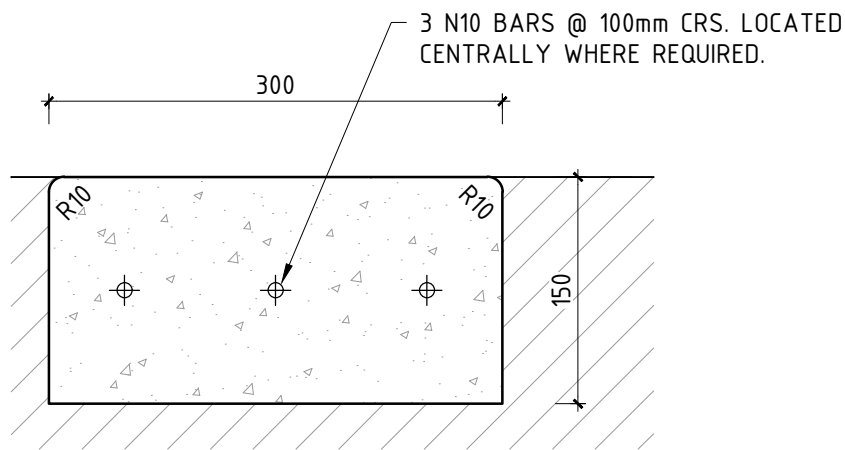


102 NORTH ROAD, YAKAMIA WA 6330
 PO BOX 484 ALBANY WA 6331
 Tel: (08) 9841 9333
 Fax: (08) 9841 4099
 Email: cityassets@albany.wa.gov.au
 Website: www.albany.wa.gov.au



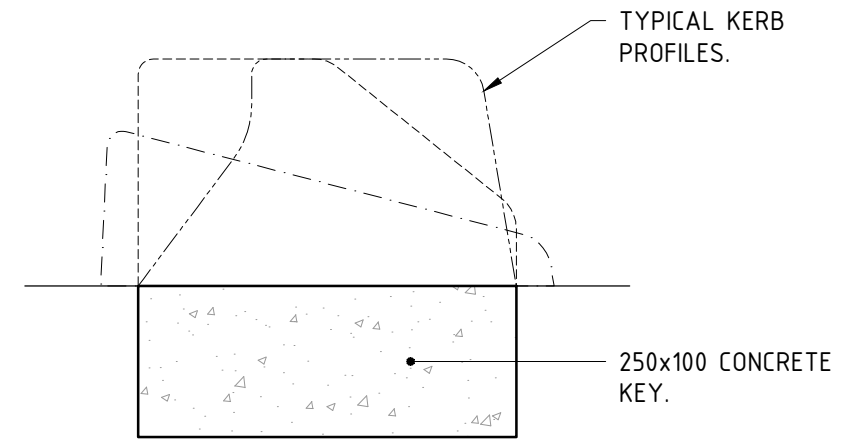
BARRIER KERB (TYPE 1)

SCALE: 1:5



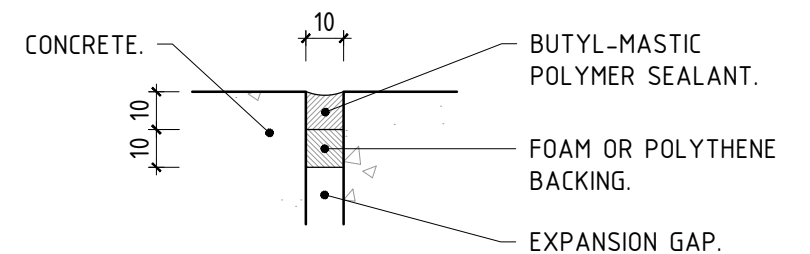
FLUSH KERB (TYPE 1)

SCALE: 1:5



TYPICAL KERB KEYING

SCALE: 1:5

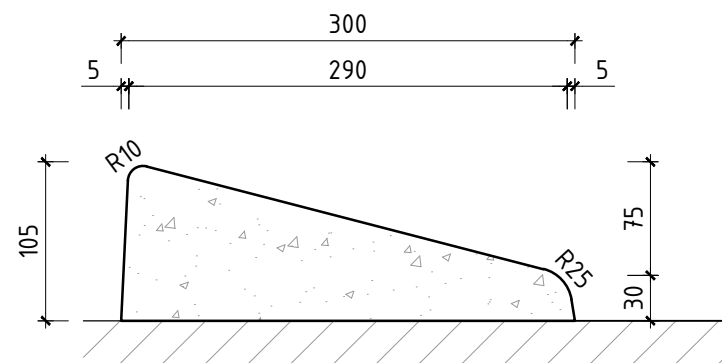


EXPANSION JOINT DETAIL

SCALE: 1:2

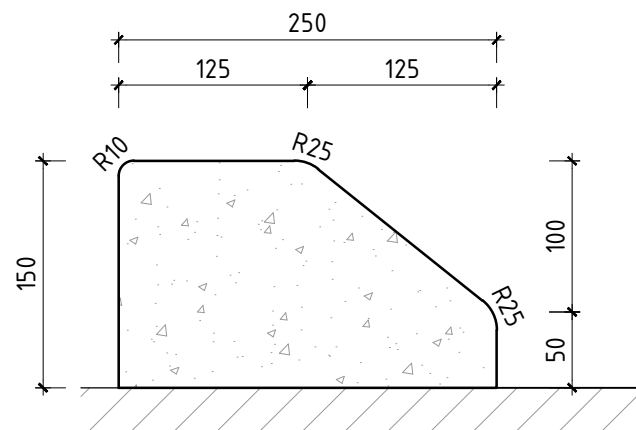
NOTES:

1. CONCRETE FOR KERBING SHALL CONFORM TO AS 1379-1991.
2. MINIMUM COMPRESSIVE STRENGTH 25MPa AT 28 DAYS.
3. MAXIMUM AGGREGATE SIZE 14mm.
4. MAXIMUM SLUMP 75mm.
5. KEYED KERBING SHALL BE PROVIDED WHERE RADIUS OF CURVATURE IS LESS THAN 40m.
6. ALL TYPE 1 MOUNTABLE KERB TO BE KEYED.
7. CONTRACTION JOINTS SHALL BE PROVIDED AT 2.0m CENTRES CONSISTING OF A GROOVE TROWELLED INTO THE CONCRETE SURFACE.
8. EVERY ALTERNATE JOINT SHALL BE AN EXPANSION JOINT AND SHALL CONSIST OF A FOAM FILLED, MASTIC GAP, 10mm WIDE CUT TO THE FULL DEPTH OF THE KERB.



MOUNTABLE KERB (TYPE 1)

SCALE: 1:5



SEMI-MOUNTABLE KERB (TYPE 1)

SCALE: 1:5

REV	DESCRIPTION	APPROVED	DATE
0	APPROVED		



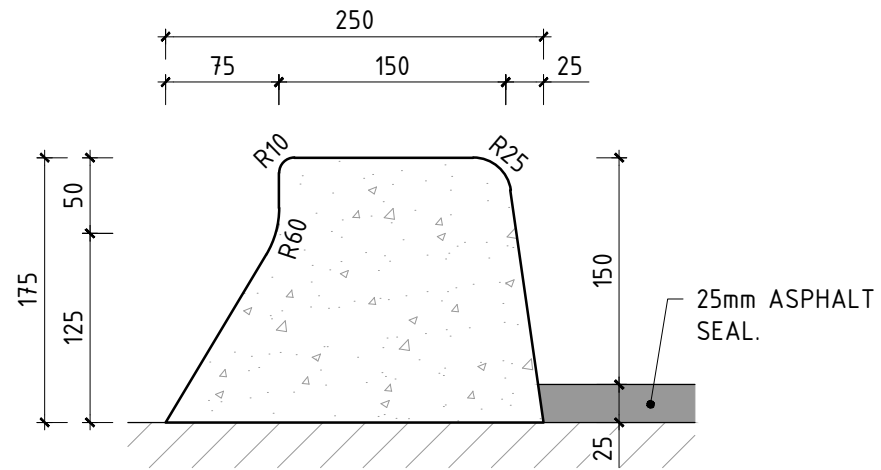
102 NORTH ROAD, YAKAMIA WA 6330
 PO BOX 484 ALBANY WA 6331
 Tel: (08) 9841 9333
 Fax: (08) 9841 4099
 Email: cityassets@albany.wa.gov.au
 Website: www.albany.wa.gov.au

CONSTRUCTION ISSUE

AUTHORISED	DESIGNED	DRAWN
		JLP

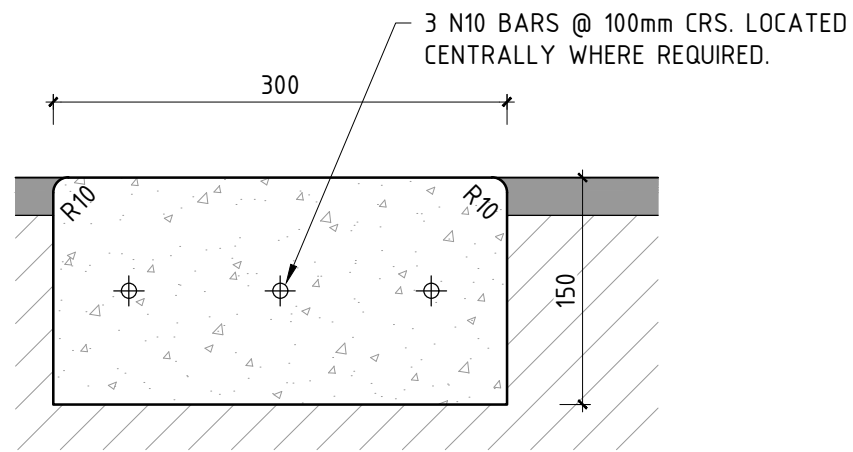
THIS DRAWING IS NOT TO BE USED FOR CONSTRUCTION UNLESS SIGNED AS APPROVED

PROJECT					
CITY OF ALBANY ENGINEERING SERVICES STANDARD CONSTRUCTION DRAWINGS					
DRAWING NAME					
TYPE 1 KERB PROFILES - 2 COAT SEAL					
DRAWING No	FILE REF	JOB No	SCALE	SHEET No	REV
-	-	-	1:25 @ A3	STD-02-01	0



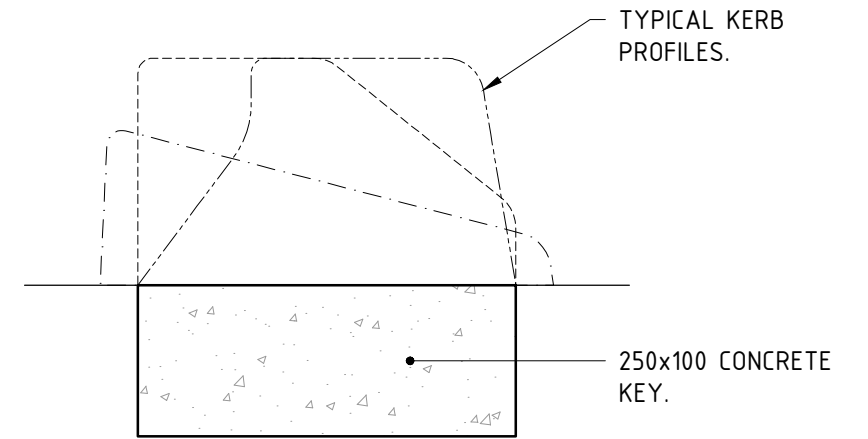
BARRIER KERB (TYPE 2)

SCALE: 1:5



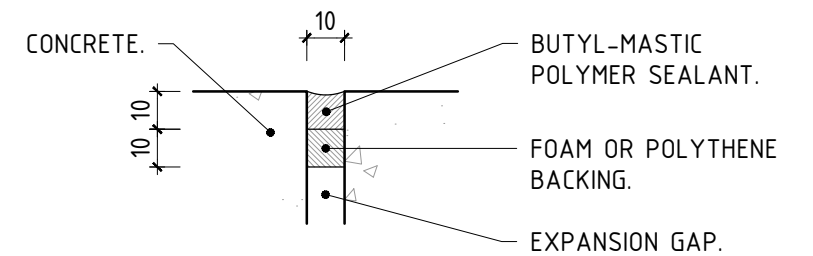
FLUSH KERB (TYPE 2)

SCALE: 1:5



TYPICAL KERB KEYING

SCALE: 1:5

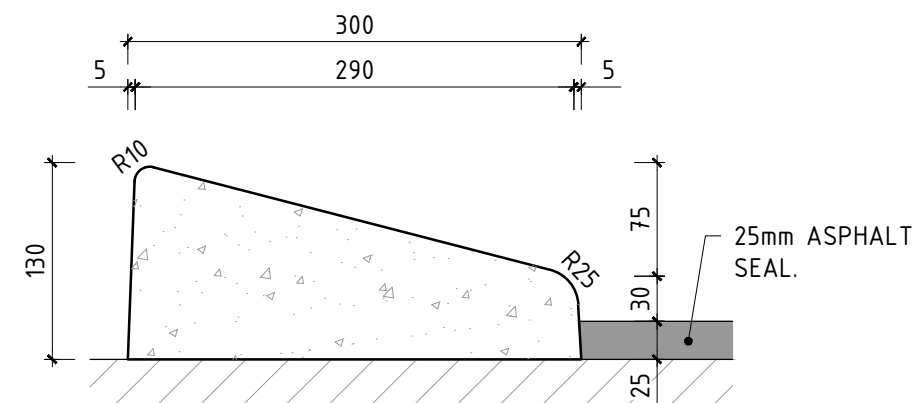


EXPANSION JOINT DETAIL

SCALE: 1:2

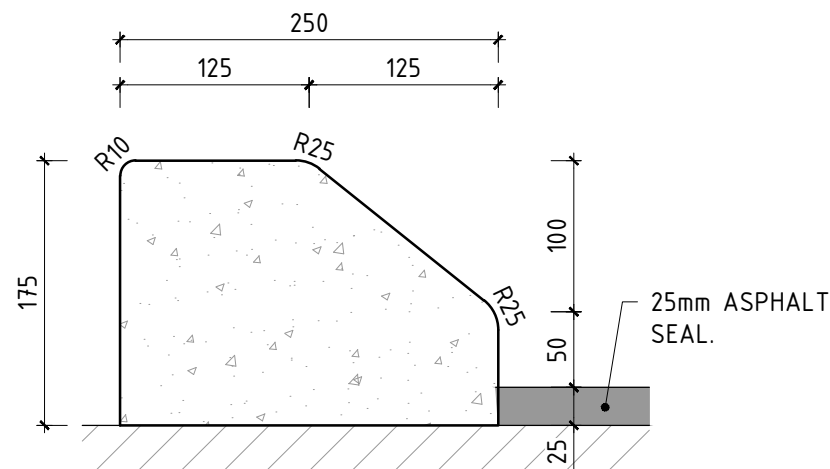
NOTES:

1. CONCRETE FOR KERBING SHALL CONFORM TO AS 1379-1991.
2. MINIMUM COMPRESSIVE STRENGTH 25MPa AT 28 DAYS.
3. MAXIMUM AGGREGATE SIZE 14mm.
4. MAXIMUM SLUMP 75mm.
5. KEYED KERBING SHALL BE PROVIDED WHERE RADIUS OF CURVATURE IS LESS THAN 40m.
6. CONTRACTION JOINTS SHALL BE PROVIDED AT 2.0m CENTRES CONSISTING OF A GROOVE TROWELLED INTO THE CONCRETE SURFACE.
7. EVERY ALTERNATE JOINT SHALL BE AN EXPANSION JOINT AND SHALL CONSIST OF A FOAM FILLED, MASTIC GAP, 10mm WIDE CUT TO THE FULL DEPTH OF THE KERB.



MOUNTABLE KERB (TYPE 2)

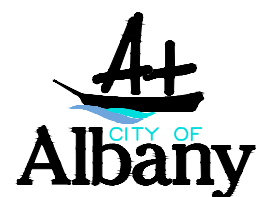
SCALE: 1:5



SEMI-MOUNTABLE KERB (TYPE 2)

SCALE: 1:5

REV	DESCRIPTION	APPROVED	DATE
0	APPROVED		



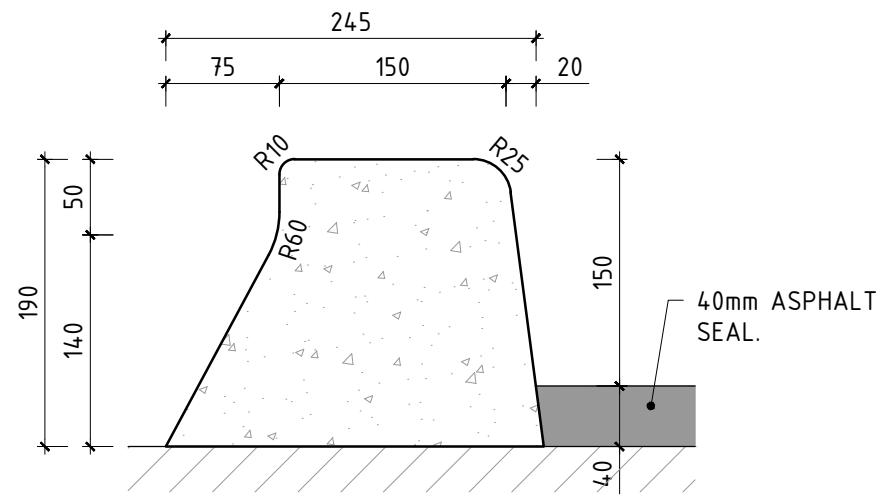
102 NORTH ROAD, YAKAMIA WA 6330
 PO BOX 484 ALBANY WA 6331
 Tel: (08) 9841 9333
 Fax: (08) 9841 4099
 Email: cityassets@albany.wa.gov.au
 Website: www.albany.wa.gov.au

CONSTRUCTION ISSUE

AUTHORISED	DESIGNED	DRAWN
		JLP

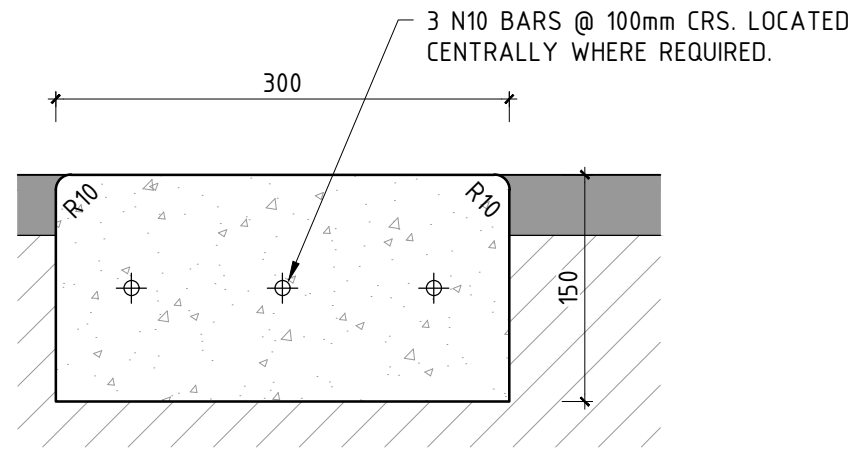
THIS DRAWING IS NOT TO BE USED FOR CONSTRUCTION UNLESS SIGNED AS APPROVED

PROJECT					
CITY OF ALBANY ENGINEERING SERVICES STANDARD CONSTRUCTION DRAWINGS					
DRAWING NAME					
TYPE 2 KERB PROFILES - 25mm ASPHALT					
DRAWING No	FILE REF	JOB No	SCALE	SHEET No	REV
-	-	-	1:25 @ A3	STD-02-02	0



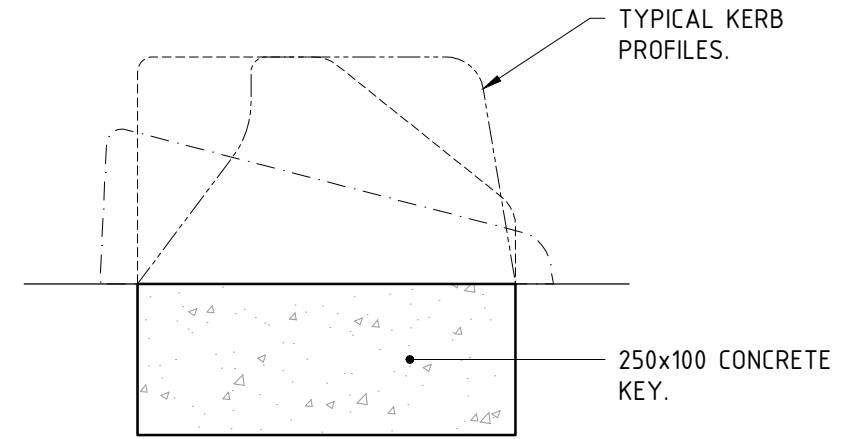
BARRIER KERB (TYPE 3)

SCALE: 1:5



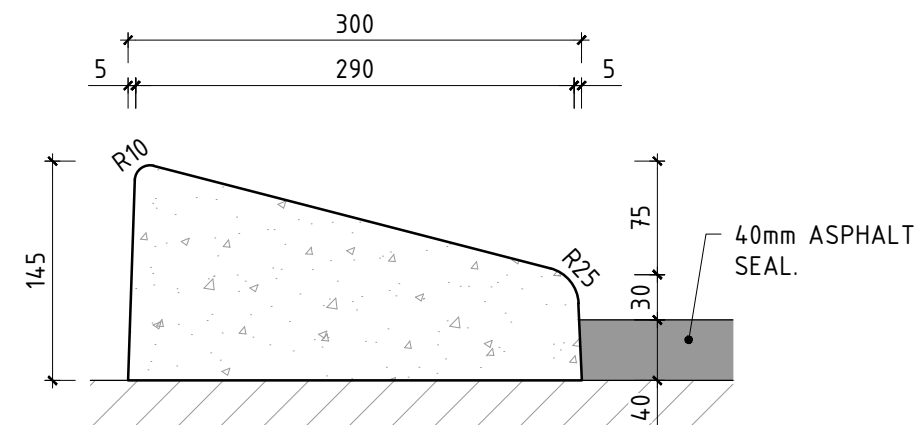
FLUSH KERB (TYPE 3)

SCALE: 1:5



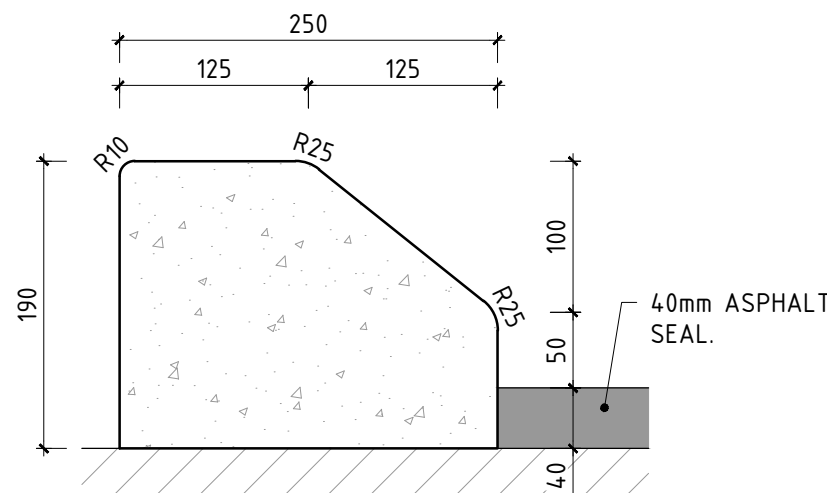
TYPICAL KERB KEYING

SCALE: 1:5



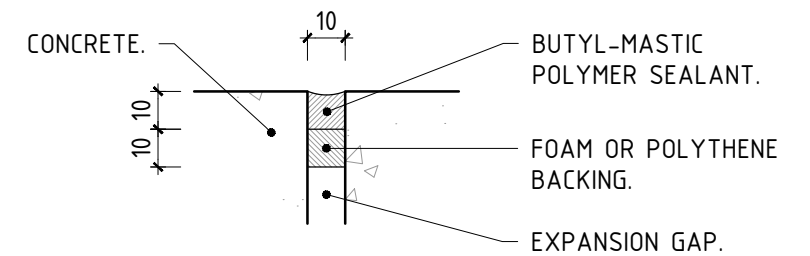
MOUNTABLE KERB (TYPE 3)

SCALE: 1:5



SEMI-MOUNTABLE KERB (TYPE 3)

SCALE: 1:5



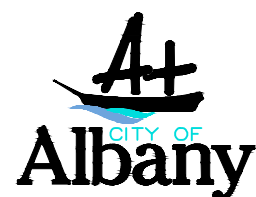
EXPANSION JOINT DETAIL

SCALE: 1:2

NOTES:

1. CONCRETE FOR KERBING SHALL CONFORM TO AS 1379-1991.
2. MINIMUM COMPRESSIVE STRENGTH 25MPa AT 28 DAYS.
3. MAXIMUM AGGREGATE SIZE 14mm.
4. MAXIMUM SLUMP 75mm.
5. KEYED KERBING SHALL BE PROVIDED WHERE RADIUS OF CURVATURE IS LESS THAN 40m.
6. CONTRACTION JOINTS SHALL BE PROVIDED AT 2.0m CENTRES CONSISTING OF A GROOVE TROWELLED INTO THE CONCRETE SURFACE.
7. EVERY ALTERNATE JOINT SHALL BE AN EXPANSION JOINT AND SHALL CONSIST OF A FOAM FILLED, MASTIC GAP, 10mm WIDE CUT TO THE FULL DEPTH OF THE KERB.

REV	DESCRIPTION	APPROVED	DATE
0	APPROVED		



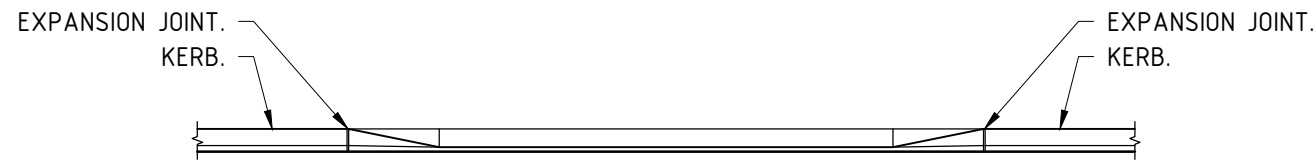
102 NORTH ROAD, YAKAMIA WA 6330
 PO BOX 484 ALBANY WA 6331
 Tel: (08) 9841 9333
 Fax: (08) 9841 4099
 Email: cityassets@albany.wa.gov.au
 Website: www.albany.wa.gov.au

CONSTRUCTION ISSUE

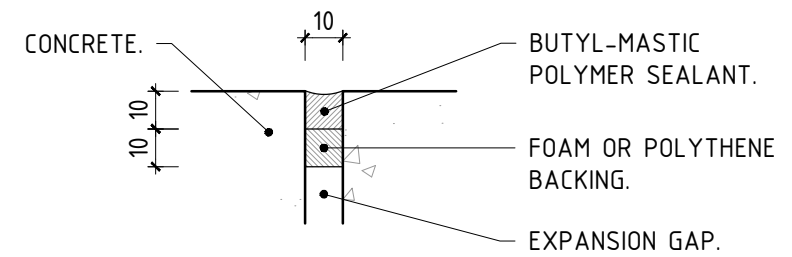
AUTHORISED	DESIGNED	DRAWN
		JLP

THIS DRAWING IS NOT TO BE USED FOR CONSTRUCTION UNLESS SIGNED AS APPROVED

PROJECT					
CITY OF ALBANY ENGINEERING SERVICES STANDARD CONSTRUCTION DRAWINGS					
DRAWING NAME					
TYPE 3 KERB PROFILES - 40mm ASPHALT					
DRAWING No	FILE REF	JOB No	SCALE	SHEET No	REV
-	-	-	1:25 @ A3	STD-02-03	0



ELEVATION

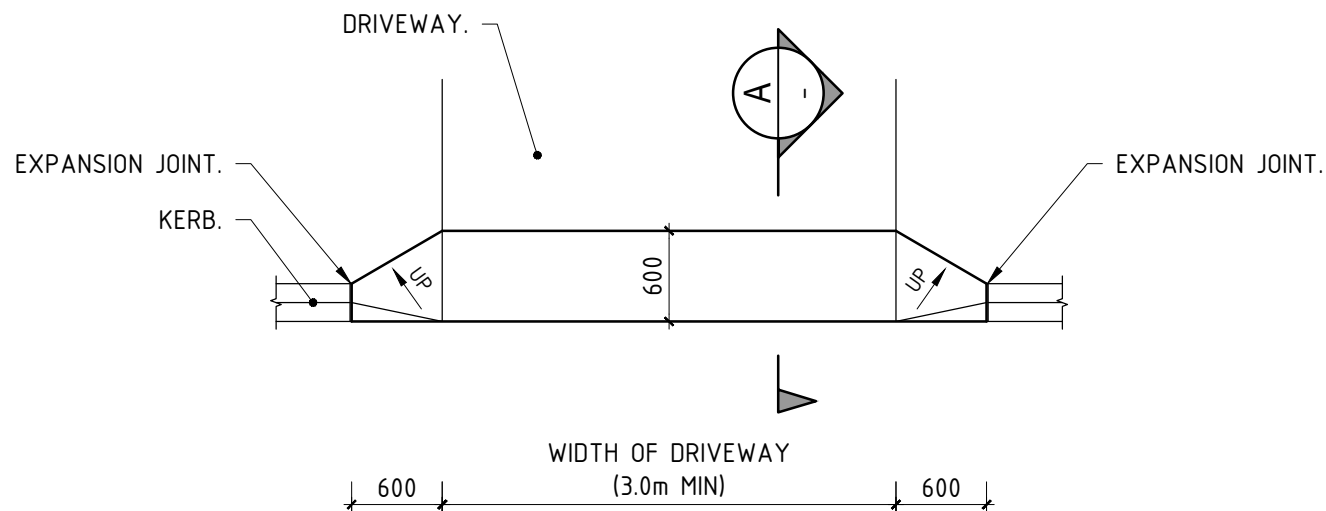


EXPANSION JOINT DETAIL

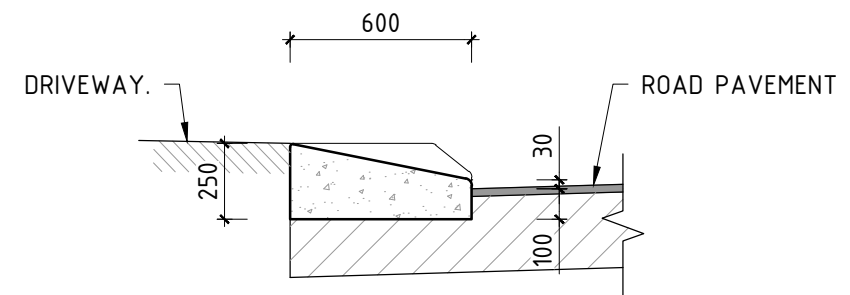
SCALE: 1:2

NOTES:

1. CONCRETE STRENGTH TO BE 25MP_a COMPRESSIVE STRENGTH AT 28 DAYS. MAXIMUM AGGREGATE SIZE 14mm AND SLUMP OF 75mm.
2. CONCRETE APRON TO HAVE A DEEP BROOM FINISH (2mm) WITH A SMOOTH EDGE APPROX 75mm WIDE AT EDGES AND EXPANSION JOINTS.
3. EXPANSION JOINT PACKING MATERIAL TO EXTEND 50MM BELOW BASE OF PATH AND 10MM OUT OF SIDES TO ENSURE COMPLETE SEPARATION OF PANELS.
4. F62 STEEL REINFORCING MESH REQUIRED IN COMMERCIAL/INDUSTRIAL & HEAVY INDUSTRIAL APRONS ONLY. REFER TO CITY OF ALBANY ENGINEERING SERVICES STANDARD CONSTRUCTION DRAWING STD-05-01 FOR CROSSOVER DETAILS.



PLAN



SECTION A

SCALE: 1:25

CONCRETE APRON

SCALE: 1:50

NOTE: CONCRETE APRONS ARE NOT REQUIRED IN AREAS WHERE MOUNTABLE KERBING HAS BEEN USED.

REV	DESCRIPTION	APPROVED	DATE
0	APPROVED		



102 NORTH ROAD, YAKAMIA WA 6330
 PO BOX 484 ALBANY WA 6331
 Tel: (08) 9841 9333
 Fax: (08) 9841 4099
 Email: cityassets@albany.wa.gov.au
 Website: www.albany.wa.gov.au

CONSTRUCTION ISSUE

AUTHORISED	DESIGNED	DRAWN
		JLP

THIS DRAWING IS NOT TO BE USED FOR CONSTRUCTION UNLESS SIGNED AS APPROVED

PROJECT					
CITY OF ALBANY ENGINEERING SERVICES STANDARD CONSTRUCTION DRAWINGS					
DRAWING NAME					
CONCRETE APRON					
DRAWING No	FILE REF	JOB No	SCALE	SHEET No	REV
-	-	-	1:25 @ A3	STD-02-04	0